

DIVE SUPPLY

CATALOGUE
2022



DIVE
SUPPLY

NEW SUUNTO D5

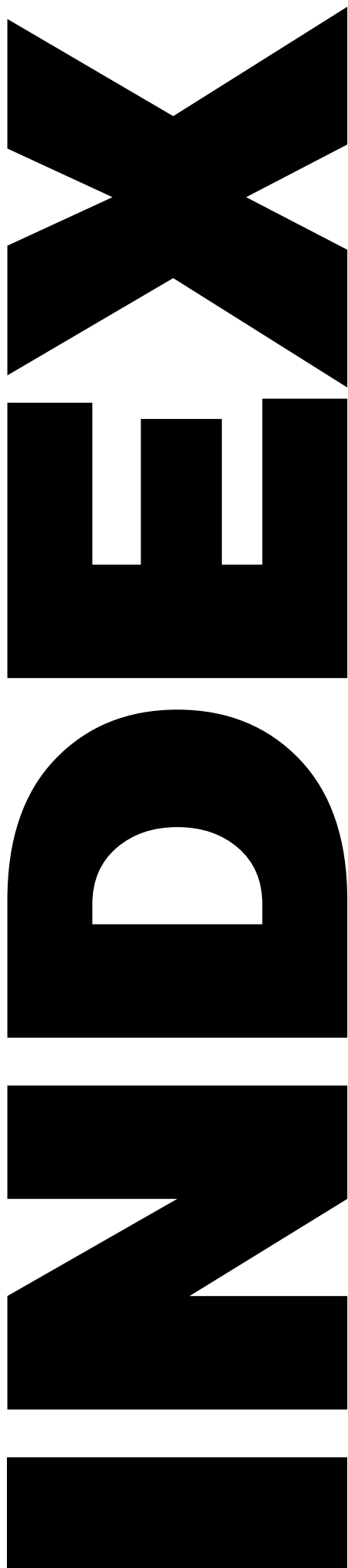
COPPER

SUUNTO

Adventure starts here



**DIVE life
Made easy.
Adventure underwater.
Connect above the surface.
Suunto D5, explore together.**



REGULATORS	2-9
BCD'S	10-17
INSTRUMENTS	18-20
DIVE COMPUTERS	21-26
MASKS & SNORKELS	27-33
GOGGLES & MASK SETS	34-36
FINS	37-39
Boots & Gloves	40
Wetsuit & Lycra	41-44
CAMERAS	45-46
BAGS & CASES	47-51
TORCHES	52-53
DIVE KNIVES	54
ACCESSORIES	55-63
TOOLS & SERVICE PARTS	64-65
TANKS, VALVES & AIR	66-69
COMPRESSORS	70-71
MARINE BOOKS	72
CUSTOM PRINTS & EMBROIDERY	73
SHOP DISPLAYS / FITTINGS	74-75

HIGH TECHNOLOGY & MAXIMUM BREATHING COMFORT WITH SCUBAPRO REGULATORS

SCUBAPRO FIRST STAGE REGULATORS

First stage regulators are divided into piston & diaphragm categories.

SCUBAPRO PISTON TECHNOLOGY

The general advantage of a piston first stage lies in its reliability & reduced maintenance requirements. More importantly, no other design can reach the high air delivery rate of a balanced piston controlled first stage. First stages with air-balanced pistons deliver significantly more air to the second stage than any other first stage. This technology is featured in our MK25 EVO first stages.

Classic downstream piston - The classic downstream valve is the first choice of diving centers & rental facilities worldwide for warm & moderate water temperatures. This technology is featured in our MK2 EVO first stage.

FIRST STAGE



PRODUCT FEATURES	MK25T EVO	MK25 EVO	MK21	MK2 EVO	MK17 EVO	MK19 EVO	MK11
Technology							
Air-balanced-flow-through •	•	•	•				
Classic downstream				•			
balanced diaphragm					•	•	•
Materials							
Chrome plated brass body		•	•	•	•	•	•
Full titanium body	•						
Cold water							
Anti-freeze protection (AF)	•	•	•		•		
Dry chamber					•	•	
XTIS antifreeze system	•	•		•		•	
Ports							
Intermediate pressure Ports (IP)	5	5	4	4	4	5	4
High Flow Ports (HFP)	5	5	4	-	2	5	2
High Pressure (HP) Ports	2	2	2	1	2	2	2
Swivelling turret with IP ports	•	•				•	
Cap with 5 HFP ports (optional)			•				
Configuration							
INT 230 bar (3336 psi)	•	•	•	•	•	•	•
DIN 300 bar (4351 psi)	•	•	•	•	•	•	•
Externally adjustable intermediate pressure	•	•	•		•		•
Weight DIN 300 (g/oz)	350 / 12.4	572 / 20.1	555 / 19.6	454 / 16	625 / 22	678 / 23.9	470 / 16.6
Weight INT (g/oz)	480 / 16.9	790 / 27.9	744 / 26.2	673 / 23.7	850 / 30	898 / 31.7	692 / 24.4
Air Flow at 200 bar (l/min / SCFM)	>8500 / 301	>8500 / 301	>7500 / 265	3000 / 106	>6500 / 230	>6900 / 244	>5500 / 195
Intermediate pressure (bar/psi)	9-9.8/ 130-142	9-9.8/ 130-142	9-9.8/ 130-142	8.5-9.8/ 123-142	9-9.8/ 130-142	9.2-9.8/ 133-142	9-9.8/ 130-142

• SCUBAPRO DIAPHRAGM TECHNOLOGY

Diaphragm-based first stages are environmentally sealed so water cannot enter the inner mechanism. Diaphragm first stages have been the favored choice of cold water divers & those working in contaminated or muddy water. This technology is featured in our MK17 EVO & MK11 first stages.

• SCUBAPRO SECOND STAGE REGULATORS

A high quality second stage can significantly reduce stress & enhance diver safety by providing a smooth, low-effort breathing response, resulting in ample yet controllable quantities of air.

• AIR-BALANCED VALVE TECHNOLOGY

The air-balanced valve technology of SCUBAPRO second stages features a balancing chamber in the second stage mechanism, slightly offsetting the force of the downstream air entering from the first stage. Air-balanced valve technology is featured in X-Series, S-Series & G-Series second stages. For best results, they should be teamed with balanced first stages like the MK25 EVO or MK17 EVO.

SECOND STAGE



PRODUCT FEATURES	A700	S600	S560	D420	C370	G260	R195	R095
Technology								
Air-balanced	•	•	•	•	•	•		
Classic downstream valve							•	•
Materials								
Precision molded carbon fiber & technopolymer housing			•		•			
Full metal valve housing	•	•		•		•	•	•
Full metal case	•							
Breathing comfort								
Coaxial flow	•				•			
Diver's adjustable inhalation effort	•	•	•		•	•		
Diver's adjustable VIVA	•	•	•	•	•	•	•	
VIVA preset								•
Hose								
Sturdy super-flow hose for extra durability & flawless air delivery	•	•	•		•	•	•	•
Left & right attachment for extra convenience				•		•	•	•
Mouthpiece								
Supercomfort HF (High Flow)	•	•	•	•	•	•	•	•
Weight (g/oz)	265 / 9.3	193 / 6.8	172 / 6.1	216 / 7.6	158 / 5.6	275 / 9.7	198 / 7.0	165 / 5.8
Air Flow at 200 bar (l/min / SCFM)	>2000 / 71	1850 / 66	1850 / 66	1800 / 64	1850 / 66	1800 / 64	1400 / 50	1400 / 50

MK25 EVO / A700 CARBON BLACK TECH



X12.770.700

First stage

- DLC (Diamond-like Carbon) black finish
- Cold water XTIS (external thermal insulating system)
- Improved cold water performance by 30% in waters down to 2°C

Second stage

- Precision handcrafted construction (full metal case)
- NEW carbon fibre cover that's virtually bulletproof
- Exceptional breathing performance at any depth
- Diver adjustable venturi-initiated vacuum assist (VIVA)
- High comfort orthodontic mouthpiece

MK25T EVO / S620X TITANIUM



X12.620.400

First stage

- Titanium construction
- Cold water XTIS (external thermal insulating system)
- Improved cold water performance by 30% in waters down to 2°C

Second stage

- Rugged reinforced technopolymer case
- Titanium barrel
- New exhaust tee increases performance while directing bubbles out of the field of view
- Compact Hi-Flow mouthpiece, exclusive to the S620 Ti - improved airflow & mouth comfort

MK25 EVO / G260 BLACK TECH



X12.771.500

First stage

- Durable Black Tech Coating with Diamond Like Carbon finish.
- Air Balanced Flow Through Piston
- Extended Thermal Insulating System
- 5 High Flow Low Pressure Ports
- 2 High Pressure Ports

Second stage

- Reinforced, Black Tech, Techno Polymer Design
- Air Balanced Second Stage
- Dive Adjustable Inhalation Effort Control and VIVA

MK25 EVO / D420



X12.420.000

First stage

- Double chrome plated marine brass
- Cold water XTIS (external thermal insulating system)
- Improved cold water performance by 30% in water down to 2°C

Second stage

- NEW. Uniquely shaped casing carries on the D-Series heritage with the latest advances in breathing performance technology
- NEW. Air-balanced Progressive Flow Control Valve is able to deliver abundant airflow with a natural smoothness comparable to breathing on the surface
- NEW casing design features inner winglets that direct airflow towards the exhaust valve, creating a dramatic improvement in exhalation effort
- NEW. Diaphragm is located in the lower section of the casing to take advantage of the pressure gradient in the upright position, making breathing even easier

MK25 EVO / S620Ti



X12.620.000

First stage

- Air balanced flow-through piston in a chrome plated brass body.
- Patented XTIS (Extended Thermal Insulating system) thermally insulating the inner mechanism from the environment, improving cold-water resistance.
- Two opposing high pressure ports.
- Four high-flow and one axial super high-flow low pressure ports on a swivel turret.
- External intermediate pressure adjustment.

Second stage

- A rugged full titanium barrel that is anti-corrosion and lightweight.
- Air balanced second stage valve.
- A rugged reinforced techno polymer case and front cover with stainless steel frame.
- A Large diaphragm inside a compact second stage casing.
- Diver-adjustable inhalation effort knob
- Venturi-Initiated Vacuum Assist (VIVA) lever.
- New design Compact Hi-Flow mouthpiece.

MK25 EVO / S600



X12.971.050

INT



X12.971.070

DIN

First stage

- Double chrome plated marine brass
- Cold water XTIS (external thermal insulating system)
- Improved cold water performance by 30% in water down to 2°C

Second stage

- Technopolymer body & components
- Diver adjustable venturi-initiated vacuum assist (VIVA)
- High comfort orthodontic mouthpiece

DEEP DOWN
YOU WANT THE BEST

MK25 EVO / G260



INT...X12.252.010



DIN...X12.252.030

First stage

- Air balanced flow-through piston in a chrome-plated brass body.
- Patented XTIS (Extended thermal Insulating system).
- Two opposing high pressure ports.
- Four high-flow and one axial super high-flow low pressure ports on a swivel turret.
- External intermediate pressure adjustment.

Second stage

- Air balanced second stage valve.
- Rugged reinforced techno polymer design featuring SCUBAPRO's largest second stage casing and diaphragm.
- Metal components.
- A diver-adjustable inhalation effort knob and a Venturi-Initiated Vacuum Assist (VIVA) dive/pre-dive switch.
- High-flow exhaust valve and a reversible hose attachment.
- Super-flow hose.

MK25 EVO / A700



X12.770.040

First stage

- Double chrome plated marine brass
- Cold water XTIS (external thermal insulating system)
- Improved cold water performance by 30% in water down to 2°C

Second stage

- Precision handcrafted construction with polished chrome exterior & full metal case
- Air balanced valve & coaxial flow
- Diver-adjustable inhalation effort
- Diver-adjustable venturi-initiated vacuum assist (VIVA)
- Super-flow hose & high comfort orthodontic mouthpiece

MK25 EVO / G260



CARBON BLACK TECH

NEW



X12.771.550

First stage

- Durable Black Tech Coating with Diamond like Carbon Finish
- Air Balanced Flow through Piston
- Extended Thermal Insulating System
- 2 High Pressure Ports
- 4 High Flow Low Pressure and 1 Super High Flow Ports Mounted on a Swivel Turret

Second stage

- Reinforced Techno polymer Design with Durable Black Tech Coating.
- Large Casing and Diaphragm for the Ultimate breathing Experience.
- Air Balanced Second Stage Valve.
- Metal Components for Increased Cold Water Protection.
- Diver Adjustable Inhalation Effort Control and Venturi Initiated Vacuum Assist (VIVA)

MK21 / R195



X12.195.021

First stage

- Air-balanced flow-through piston.
- Compact, polished chrome plated marine grade brass body.
- 2 high pressure ports, 4 low pressure ports.
- Optional hose routing cap, ideal for technical diving.
- Redesigned yoke allows for easier mounting on a cylinder.

Second stage

- Classic Downstream Valve with adjustable VIVA switch.
- Metal second stage valve housing.
- Reversible hose attachment.
- Comfortable orthodontic mouthpiece.

MK21 / S560



X12.974.000

First stage

- Compact design 20% smaller than the MK25
- Air-balanced flow through piston design
- Optional replaceable head ideal for technical diving
- 4 LP ports & 2 HP ports

Second stage

- Lightweight techno-polymer barrel
- Diver adjustable inhalation effort
- Diver-adjustable venturi-initiated vacuum assist (VIVA)
- Ultra comfortable orthodontic mouthpiece

MK21 / C370



X12.979.000

First stage

- Compact design 20% smaller than the MK25
- Air-balanced flow through piston design
- Optional replaceable head ideal for technical diving
- 4 LP ports & 2 HP ports

Second stage

- Compact body & exhaust tee
- Optimal flow design incorporates a special barrel & balanced poppet valve to produce maximum airflow under any diving conditions
- Diver-adjustable inhalation effort
- Venturi-Initiated Vacuum Assist (VIVA)
- Ultra-comfortable orthodontic mouthpiece



DEEP DOWN
YOU WANT THE BEST

MK19 EVO / G260

CARBON BLACK TECH

NEW



INT...X12.719.500
DIN...X12.719.600

First stage

- Smaller and compact first stage.
- Air-balanced diaphragm delivering constant and effortless airflow.
- Environmentally sealed system.
- New dry chamber is equipped with a double spring making it compact and reliable.
- Two high pressure ports.
- Swivel turret with four High-Flow low pressure ports and one axial Super High-Flow low pressure port.

Second stage

- Lightweight carbon fiber design.
- Increased resistance to freezing from internal metal componentry.
- Large casing and diaphragm on second stage for improved breathing sensitivity.
- Diver-adjustable inhalation effort knob fine-tunes air delivery.
- VIVA dive/pre-dive switch prevents free flows.
- Super-flow hose.
- High-flow exhaust valve reduces exhalation effort.
- Convenient large purge button.
- Easy to grip orthodontic mouthpiece.
- Available in DIN or INT configuration.



MK11 / C370



X12.175.000

First stage

- Balanced diaphragm design
- Cold water – anti-freeze protection
- Chrome plated brass body in compact design
- 4 LP ports & 2 HP ports

Second stage

- Compact body & exhaust tee
- Optimal flow design incorporates a special barrel & balanced poppet valve to produce maximum airflow under any diving conditions
- Diver-adjustable inhalation effort
- Venturi-Initiated Vacuum Assist (VIVA)
- Ultra-comfortable orthodontic mouthpiece

MK19 EVO / G260



INT...X12.255.010

First stage

- Air-balanced first stage diaphragm
- Environmentally sealed system
- New dry chamber equipped with a double spring making it compact and reliable.
- Two HP ports
- Five high-flow low pressure ports on a swivel turret plus one axial super high-flow LP port.
- Available in INT or DIN configuration.

Second stage

- Air balanced second stage valve.
- Rugged reinforced techno polymer design.
- All Metal components.
- Diver-adjustable inhalation effort knob.
- Venturi-Initiated Vacuum Assist (VIVA) dive/pre-dive switch.
- High-flow exhaust valve.
- Super-flow hose.



MK11 / R195



X12.195.011

First stage

- Air balanced diaphragm design.
- Chrome Plated compact brass body.
- 2 high pressure, 4 low pressure ports.
- External intermediate pressure adjustment.

Second stage

- Classic Downstream Valve with adjustable VIVA switch.
- Metal second stage valve housing.
- Reversible hose attachment.
- Super flow hose.
- Comfortable orthodontic mouthpiece.

MK17 EVO / S600



X12.927.050

First stage

- Air balanced diaphragm
- New machined body
- 4 high flow LP ports & 2 HP ports
- Environmentally sealed mechanism
- New cover & caps

Second stage

- Technopolymer body & components
- Diver adjustable venturi-initiated vacuum assist (VIVA)
- High comfort orthodontic mouthpiece

MK11 / S270



NEW

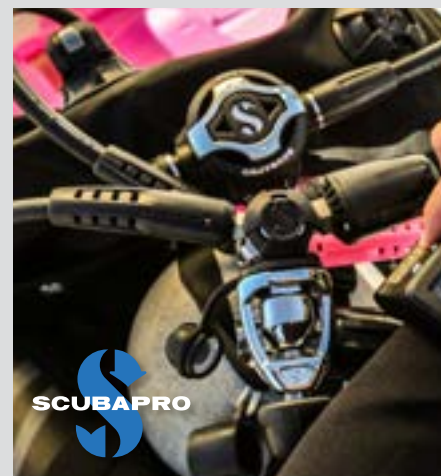
X12.177.000

First stage

- Air balanced diaphragm design.
- Chrome plated compact brass body.
- 2 high pressure, 4 low pressure ports.
- External intermediate pressure adjustment.
- Available in 3364psi/232bar INT configuration.

Second stage

- Lightweight casing made of a fiberglass-reinforced nylon core.
- Techno polymer plastic barrel with a metal thread.
- Air-balanced valve.
- Easy to operate Dive/Pre-dive switch.
- Compact and efficient exhaust tee.



MK2 EVO / R195



X12.118.000

First stage

- Increased performance at low tank pressure
- Cold water XTIS (external thermal insulating system)
- Improved positioning – 5% reduced in length
- New piston design with 15% increased airflow

Second stage

- Classic downstream valve
- Diver-adjustable venturi-initiated vacuum assist (VIVA)
- Reversible hose attachment
- Super-flow hose
- Super comfort orthodontic mouthpiece
- Metal valve housing

MK2 EVO / R095



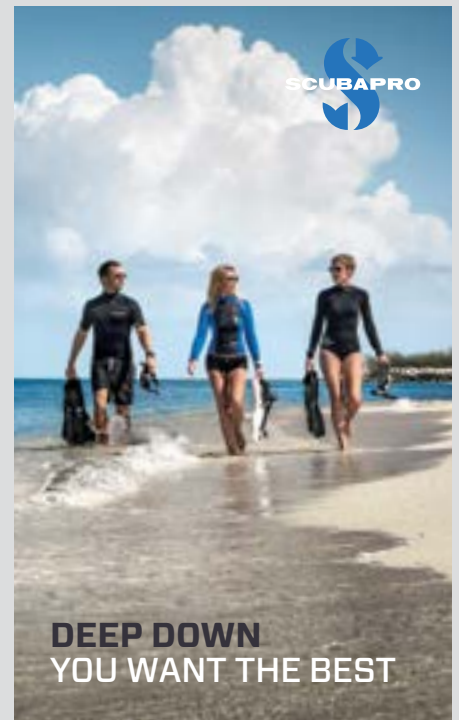
X12.096.000

First stage

- Increased performance at low tank pressure
- Cold water XTIS (external thermal insulating system)
- Improved positioning – 5% reduced in length
- New piston design with 15% increased airflow

Second stage

- Classic downstream valve
- Preset VIVA
- Reversible LP hose attachment



DEEP DOWN
YOU WANT THE BEST

SIDEMOUNT REGULATOR SET



X12.252.060

Offering effortless air delivery and outstanding reliability, this is the go-to air delivery system for cold water or technical diving. There's no better example of solid first stage performance in all water temperatures than the MK25 EVO. Teamed with the venerable G260, this system can be relied upon to deliver top-of-the-line performance in the most extreme conditions.

Set Contains

- 2 x MK25 EVO DIN 300
- 2 x G260
- 2 x Compact Gauges

Plus

- 2 x HP hose 20cm
- LP hoses: 20cm (x2), 64cm (x1), 200cm (x1)
- BPI quick coupling x 2
- LP hose elbow x 1
- Regulator Necklace x 1
- Plug x 2

MK2 EVO



INT (Yoke)...X10.063.000
DIN...X10.063.300

- NEW XTIS (external thermal insulating system)
- Industry renowned 'workhorse' regulator for Dive Schools
- New piston design with 15% increased airflow
- 50% increase in freezing resistance
- 4 LP ports & 1 HP port

MK11



INT (Yoke)...X10.708.000
DIN...X10.708.300

- Balanced diaphragm design
- Cold water – anti-freeze protection
- Chrome plated brass body in compact design
- 4 LP ports & 2 HP ports

MK17 EVO



INT (Yoke)...X10.714.010
DIN...X10.714.030

- Air balanced diaphragm
- New machined body
- 4 high flow LP port & 2 HP ports
- Environmentally sealed mechanism
- New cover & caps
- DIN wheel (new design)

MK19 EVO

SCUBAPRO



NEW

INT (Yoke)...X10.719.010
DIN...X10.719.030

- Air-balanced first stage diaphragm regulator.
- Environmentally sealed system.
- New dry chamber.
- Two opposing high pressure.
- Swivel turret comes with four High-Flow LP ports plus one axial Super High-Flow LP port.
- CE certified according the latest EN250A European Standards for all diving conditions, including extreme cold water

MK21

SCUBAPRO



INT (Yoke)...X10.721.000
DIN...X10.721.300

- Compact design 20% smaller than the MK25
- Air-balanced flow through piston design
- Optional replaceable head ideal for technical diving
- 4 LP ports & dual HP ports
- Adjustable intermediate pressure

MK25 EVO

SCUBAPRO



INT (Yoke)...X10.713.010
DIN...X10.713.030

- Consistently ranked as the top performing first stage
- Air-balanced flow through piston design
- NEW XTIS (external thermal insulating system)
- 30% increase in freezing resistance
- 5 extra high airflow LP ports on a rotating turret
- 2 HP ports

A700

SCUBAPRO



X11.700.000

- Precision handcrafted construction with polished chrome exterior & full metal case
- Air balanced valve & coaxial flow
- Diver-adjustable inhalation effort
- Diver-adjustable venturi-initiated vacuum assist (VIVA)
- Super-flow hose & high comfort orthodontic mouthpiece

S620Ti TITANIUM

SCUBAPRO



X11.620.000

- Air balanced flow valve
- Diver-adjustable venturi-initiated vacuum assist (VIVA)
- Diver-adjustable inhalation effort
- Full metal valve housing
- Super-flow hose
- High comfort orthodontic mouthpiece

S600

SCUBAPRO



X11.603.000

- Air balanced flow valve
- Diver-adjustable venturi-initiated vacuum assist (VIVA)
- Diver-adjustable inhalation effort
- Full metal valve housing
- Super-flow hose
- High comfort orthodontic mouthpiece

S560

SCUBAPRO



X11.560.000

- Lightweight techno-polymer barrel
- Air balanced flow valve
- Diver adjustable inhalation effort
- Diver-adjustable venturi-initiated vacuum assist (VIVA)
- High flow exhaust valve
- Super flow hose & ultra comfortable orthodontic mouthpiece

C370

SCUBAPRO



X11.370.000

- Compact body & exhaust tee
- Optimal flow design incorporates a special barrel & balanced poppet valve to produce maximum airflow under any diving conditions
- Diver-adjustable inhalation effort
- Venturi-Initiated Vacuum Assist (VIVA)
- Ultra-comfortable orthodontic mouthpiece

G260

SCUBAPRO



X11.263.000

- Air balanced flow valve
- Diver-adjustable inhalation effort
- Diver-adjustable venturi-initiated vacuum assist (VIVA)
- High flow exhaust valve
- Ultra comfortable orthodontic mouth piece
- Full metal valve housing

**DEEP DOWN
YOU WANT THE BEST**



R195



X11.331.000



- Classic downstream valve
- Diver-adjustable venturi-initiated vacuum assist (VIVA)
- Reversible hose attachment
- Super-flow hose
- Super comfort orthodontic mouthpiece
- Metal valve housing

R095



X11.330.600



- Classic downstream valve
- Preset VIVA tuned for safe, uncomplicated use
- Super-flow hose
- High comfort orthodontic mouthpiece
- Full metal valve housing
- Reversible hose attachment

R095 OCTOPUS



X11.330.400



- Classic downstream valve
- Preset VIVA
- High comfort orthodontic mouthpiece
- Full metal valve housing
- Reversible hose attachment
- 1m yellow super flow hose

R195 OCTOPUS



X11.331.200



- Classic downstream valve
- Diver-adjustable venturi-initiated vacuum assist (VIVA)
- Super-flow hose
- High comfort orthodontic mouthpiece
- Full metal valve housing
- Reversible hose attachment
- 1m yellow super flow hose

S270 OCTOPUS



X11.270.200



- Lightweight casing made of a fiberglass-reinforced nylon core.
- High visibility front yellow cover
- Techno polymer plastic barrel with a metal thread.
- Air-balanced valve.
- Easy to operate Dive/Pre-dive switch.
- Compact and efficient exhaust tee.

AIR 2 BLACK 5th GENERATION



X21.090.000



- Downstream valve
- Air-balanced power inflator valve
- Pre-tuned fixed VIVA flow vane
- Improved design, control & safety for BC inflating
- Larger deflation button & high comfort mouthpiece



DEEP DOWN
YOU WANT THE BEST

"DEEP DOWN YOU WANT THE BEST"

We offer the best, at a price you can afford. A combination of the Scubapro MK2 Evo regulator set with its proven reliability and the durable T-One BCD. The MK2 Evo is the latest model of this regulator with an unrivalled reputation in the Dive Industry for its ability to work in all conditions. The New Evo version is reduced in size and weight but has an increased air flow of 3,000 L/min. The T-One now features new materials and is setting new standards.

The Dive Center Set Includes:
SCUBAPRO T-One BCD – 5th Gen
Features:

- Durable 1,000 denier colour lock Cordura
- Comfortable 420 denier nylon interior
- Reinforced shoulder pads
- Balanced Power Inflator
- Padded Cummerbund and Back Pack
- Colour coded tabs:

T-One Size	XXS	XS	S	M	L	XL	XXL
Colour Coded	Pu	Pi	G	B	Li	O	Gp
Lift Capacity in Kg.	9	11	14	17	18	21	22



SCUBAPRO MK2 Evo First Stage
Features:

- Downstream piston regulator
- Chrome plated brass body
- Extended Thermal insulating system
- 4 LP and 1 HP port

SCUBAPRO R095/R095 Octopus
Features:

- Classic downstream valve
- Metal valve housing
- Preset VIVA
- Super flow hose



XSet1-DB

Includes: **Deep Blue Mini 2K SPG**
Features:

- 0-400 Bar pressure gauge
- Low profile boot
- Brass Body
- Slim line Hose



XSet1-SP

Includes: **SCUBAPRO SPG Complete**
Features:

- Scubapro 0-400 Bar pressure gauge.
- Brass Body
- Scubapro High Pressure Hose



XSet2-SP

Includes: **SCUBAPRO U-Line 2**
Features:

- Scubapro 0-400 Bar pressure gauge.
- 60 meter Depth Gauge
- Scubapro High Pressure Hose

HYDROS PRO BCD



Man S...X21.730.200S
 Man M...X21.730.300M
 Man L...X21.730.400L
 Man XL/XXL...X21.730.500XL-XXL
 Lady XS/S...X21.736.100XS-S
 Lady M...X21.736.300M
 Lady L...X21.736.400L



- Winner 'BEST IN SHOW' - DEMA 2015
- Innovative high tech modular system
- Monprene® TPE (thermoplastic elastomer)
 - Unrivalled strength & durability
 - Water resistant
 - Super quick drying
- Integrated weights system, 3 dump valves, 6 D-rings with adjustable height, trim pockets
- Colours for Men: Black, Blue, Orange, White, Yellow
- Colours for Women: Pink, Purple, Black, White
- Converts into a lightweight travel BCD with free backpack
- Sizes for Men: S, M, L, XL-XXL
- Sizes for Women: XS-S, M, L

Introducing the key to transforming your dive experience. Hydros Pro is an incredible feat of engineering offering unprecedented convenience, on-the-go configuration & specialized fits. Hydros Pro isn't just for professionals, it's for anyone who loves to dive & wants the best

Instant Dry & Durable

No water absorption means neutral buoyancy & a light weight BC that is dry when it comes out of the water. Hydros Pro also stands up to UV, chemicals & abrasion

Smart-Pack Design

Pack your entire kit into the small backpack (included) & get going

2-in-1 BC

With a quick switch of clips, Hydros Pro transforms from a basic harness travel BC to a jacket with fully integrated weight pockets

HYDROS PRO BCD ACCESSORIES



X21.745.010



X21.745.100



X21.745.200



X21.745.250



X21.745.400



X21.745.500



X21.745.600



X21.745.700



X21.745.710



X21.746.001



X21.746.002



X21.746.006



X21.746.400



X21.746.005



X21.746.500

Colour Kit Army Green...X21.745.010

Colour Kit Black...X21.745.100

Colour Kit Blue...X21.745.200

Colour Kit Turquoise...X21.745.250

Colour Kit Orange...X21.745.400

Colour Kit Yellow...X21.745.500

Colour Kit White...X21.745.600

Colour Kit Pink...X21.745.700

Colour Kit Purple...X21.745.710

Mini D-ring Set...X21.746.002

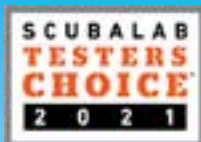
Ninja Pocket...X21.746.005

Cargo Thigh Pocket...X21.746.006

Accessory Bungee Set - M...X21.746.400

Accessory Bungee Set - L...X21.746.500

HYDROS X BCD



Men:

S...X21.900.200S

M...X21.900.300M

L...X21.900.400L

XL-2XL...X21.900.500XL-XXL

Women:

XS-S...X21.901.100XS-S

M...X21.901.300M

L...X21.901.400L



- HYDROS X is based on the same modular Monprene® harness and backpack design popularized by the Hydros Pro back-inflation BCD
- NEW EndurTex high-tenacity 420 nylon fabric bladder is lightweight yet extremely durable
- Monprene® thermoplastic harness is extremely resistant to UV, chemicals and abrasion, plus it doesn't absorb water to minimize drying time
- Rotating quick-release shoulder buckles allow you to route your shoulder straps to optimize fit
- Super Cinch tank buckle system locks the tank in solid for maximum stability at depth
- Integrated front weight system is based on the same Monprene® pockets found on the HYDROS PRO
- Two big zippered cargo pockets offer great gear-carrying capacity and are easily accessible even when the weight pouches are fully loaded
- Two stainless steel D-rings provide clip-on points for additional gear
- Includes Multi-Mount Accessory Matrix with multiple D-rings and mounting points that easily attach various dive accessories and color kits are available see page 10
- Buoyant lift ranges from 13kg to 20kg for men, and 13kg to 17kg for women, depending on size

GLIDE BCD



XS...X22.285.120XS
S...X22.285.220S
M...X22.285.320M
L...X22.285.420L
XL...X22.285.520XL

- Constructed of 420 denier nylon for lightweight & long-lasting durability
- Two large zippered pockets w. knife grommets
- 4 Angled stainless steel D-rings along with two smaller stainless D-rings
- Wrap around air bladder
- New Y-Fit shoulders to maximize fit & comfort
- Soft neoprene neck & padded backpack
- Super cinch tank buckle system
- Adjustable cummerbund
- Quick-release integrated weight pouches
- Counter balance trim pockets

TANK BACK PACK COMPLETE



UTP201

- Traditional single tank backpack
- Made from High-Density Polyethylene (HDPE) material
- 2" webbing
- Quick release stainless steel shoulder and waist buckles
- Adjustable single nylon tank cam buckle
- Convenient integrated carry handle

T-ONE BCD



XXS...X21.723.000XXS
XS...X21.723.100XS
S...X21.723.200S
M...X21.723.300M
L...X21.723.400L
XL...X21.723.500XL
XXL...X21.723.600XXL

- Heavy duty Cordura 1000D exterior & lightweight 420D interior
- Adjustable chest strap
- Comfort backpack
- 2 Pockets with restyled graphics & internal octopus holder
- Adjustable padded cummerbund
- Available in 7 sizes
- Balanced power inflator

SEAHAWK 2 BCD



- Ergonomic shoulder design with rotating buckles improves fit
- Reinforced soft backpack with high-grip tank patch and inner padding
- Super Cinch stainless steel tank band system
- 50mm waist strap with lightweight plastic buckle
- Two large zippered pockets providing lots of cargo-carrying capability
- 6 Stainless Steel D-Rings
- Constructed of 1000 denier nylon and 420 denier nylon for maximum durability
- Air cell offers substantial buoyant lift when inflated.
- Balanced power inflator
- Soft neoprene neck roll and padded back pad.
- Quick-release integrated weight pouches secured with low-profile buckles
- Two rear trim pouches help create a comfortable swimming position

2XS...X22.142.010XXS
XS...X22.142.110XS
S...X22.142.210S
M...X22.142.310M
L...X22.142.410L

S-TEK PURE HARNESS WITH BACK PLATE



X22.241.001



X22.241.002

- Continuous Webbing Harness
- Shoulder Configuration Options
- Stainless Steel Waist Buckle
- 3D Formed Back Plate
- EVO Angle Webbing Slots
- Recessed Wing Nut Socket
- Multiple Mounting Points for Trim Weights
- Convenient Built-In Handle
- Branded Silicone Epaulet
- Multiple Gear Clipping Options
- Two Back Plate Options Stainless Steel & Aluminum.
- Color Customization

Stainless Steel Back Plate...X22.241.001
Aluminum Back Plate...X22.241.002

S-TEK PRO HARNESS WITH BACK PLATE



X22.242.001



X22.242.002

- Molded Monprene® Pads
- Adjustable Shoulder Buckle and D-Ring Heights
- 3D Formed Back Plate
- EVO Angle Webbing Slots
- Recessed Wing Nut Socket
- Multiple Mounting Points for Trim Weights
- Convenient Built-In Handle
- Branded Silicone Epaulet
- Multiple Gear Clipping Options
- Two Back Plate Options Stainless Steel & Aluminum.
- Color Customization Available

Stainless Steel Back Plate...X22.242.001
Aluminum Back Plate...X22.242.002

DONUT WINGS S-TEK



X22.240.030



X22.240.040



X22.240.060

- 1000D Cordura Outer Shell and 500D Cordura Inner Bladder
- Durable YKK Zipper
- Improved Rounded Profile
- Tek Balanced Power Inflator
- Elliptical EPDM Corrugated Inflator Hose
- 3 Lift Capacities: 30lbs/13kg, 40lbs/18kg and 60lbs/27kg

Donut Wing 30lbs/13kg...X22.240.030
Donut Wing 40lbs/18kg...X22.240.040
Donut Wing 60lbs/27kg...X22.240.060

SINGLE TANK ADAPTER S-TEK



X23.607.000

- Marine grade aluminum
- Single cinch band
- Rubber grip pads
- Fixed Bolts
- Tank height adjustment strap



S-TEK PURE HARNESS PACKAGED SETS



30 lbs



X22.248.030



40 lbs

X22.248.040



60 lbs

X22.248.060

- Continuous Webbing Harness
- Shoulder Configuration Options
- Stainless Steel Waist Buckle
- 3D Formed Back Plate
- EVO Angle Webbing Slots
- Recessed Wing Nut Socket
- Mounting Points for trim weights
- Convenient Built-In Handle
- Branded Silicone Epaulet
- Multiple Gear Clipping Options
- Two Back Plate Options Stainless Steel & Aluminum.
- 1000D Cordura Outer Shell and 500D Cordura Inner Bladder
- Improved Rounded Profile
- Tek Balanced Power Inflator
- Elliptical EPDM Corrugated Inflator Hose
- Single Tank Adapter
- Color Customization Available

Donut Wing 30lbs
& Single Tank Adapter...X22.248.030
Donut Wing 40lbs...X22.248.040
Donut Wing 60lbs...X22.248.060

S-TEK PRO SYSTEM PACKAGED SETS



30 lbs



X22.249.030



40 lbs

X22.249.040



60 lbs

X22.249.060

- Molded Monprene® Pads
- Adjustable Shoulder Buckle and D-Ring Heights
- 3D Formed Back Plate
- EVO Angle Webbing Slots
- Recessed Wing Nut Socket
- Mounting Points for trim weights
- Convenient Built-In Handle
- Branded Silicone Epaulet
- Multiple Gear Clipping Options
- Two Back Plate Options Stainless Steel & Aluminum.
- 1000D Cordura Outer Shell and 500D Cordura Inner Bladder
- Improved Rounded Profile
- Tek Balanced Power Inflator
- Elliptical EPDM Corrugated Inflator Hose
- Single Tank Adapter only with the 30lb/13kg systems.
- Color Customization Available

Donut Wing 30lbs
& Single Tank Adapter...X22.249.030
Donut Wing 40lbs...X22.249.050
Donut Wing 60lbs...X22.249.060

BACK PLATE COLOR KITS S-TEK



Black

White

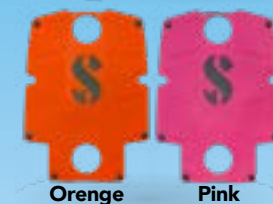
Yellow



Blue

Turquoise

Amy Green



Orange

Pink



Black

White

Yellow

Blue



Turquoise

Amy Green

Orange

Pink

- Molded Monprene color pads in 8 colors.
- Fits Both the Pure or Pure Harness System
- Can be used as a Storage Pack
- Available as two separate Kits

Backpad Kit

- 1 x Backpad
- 6 x Mounting Screws
- 6 x Grommets and Washers

Shoulder and Waist kit

- 2 x Shoulder Pads
- 2 x Waist Pads

Back plate - Black...X23.611.000
Back plate - White...X23.611.001
Back plate - Yellow...X23.611.002
Back plate - Blue...X23.611.003
Back plate - Turquoise...X23.611.004
Back plate - Green...X23.611.005
Back plate - Orange...X23.611.006
Back plate - Pink...X23.611.007

Shoulder & Waist - Black...X23.616.000
Shoulder & Waist - White...X23.616.001
Shoulder & Waist - Yellow...X23.616.002
Shoulder & Waist - Blue...X23.616.003
Shoulder & Waist - Turquoise...X23.616.004
Shoulder & Waist - Amy...X23.616.005
Shoulder & Waist - Orange...X23.616.006
Shoulder & Waist - Pink...X23.616.007

EXPEDITION REEL S-TEK



X40.201.330



X40.201.660



- Durable Construction
- Anti-Snag Stainless Steel Lock-Down Screw
- Anti-Release Eyelet
- Ergonomic Anti-Snag Winder
- Integrated Stealth Line Cleat and Removable Torben-Loc Line Anchor
- Line Capacity Gauge
- Two Line Lengths: 330 ft/100m or 660 ft/200m.
- Stainless Steel Bolt Snap Included

330ft/100m...X40.201.330
660ft/200m...X40.201.660

S-TEK MARKERS



X22.204.001



X22.204.002



S-TEK Marker- Cookie Monster

- 10 pack of Line Cookies
- Threaded on bungee cord with Stainless Steel Bolt Snap

S-TEK Marker- Arrow Monster

- 10 pack of Line Arrows
- Threaded on bungee cord with Stainless Steel Bolt Snap

Cookie Monster...X22.204.001
Arrow Monster...X22.204.002

SPINNER SPOOLS S-TEK



X40.202.050



X40.202.100



X40.202.150



X40.203.X00

- Spinner Discs
- Slotted Design
- Disc Brake Effect
- Durable Construction
- Spool Body Design
- Stainless Steel Bolt Snap Included
- Color Customization Available

Spinner Spool 50ft/15m...X40.202.050
Spinner Spool 100ft/30m...X40.202.100
Spinner Spool 150ft/45m...X40.202.150
Spool Colour Kit White...X40.203.001
Spool Colour Kit Yellow...X40.203.002
Spool Colour Kit Blue...X40.203.003
Spool Colour Kit Turquoise...X40.203.004
Spool Colour Kit Army Green...X40.203.005
Spool Colour Kit Orange...X40.203.006
Spool Colour Kit Pink...X40.203.007

BUNGEE REGULATOR NECKLACE S-TEK



X01.012.000



- Quality Bungee Cord
- Necklace and Mouthpiece clip
- Fits any Regulator Second Stage

FLUID FORM WEIGHT SYSTEM S-TEK



X23.601.000

- Stainless Steel mounting guides for a secure fit onto waist straps
- Stainless Steel D-Ring to attach accessories
- Kit Includes:
2 x Complete Weight Holsters
2 x Weight Pockets
- Supplied Only in Black
- Compatible with Hydros accessories:
Color Kits
Knife Mounts
Mini D-rings
Ninja Pockets

TRIM WEIGHT POCKET S-TEK



X23.609.000

- Mounting Baton to mount the pockets to your back plate
- 1000D Cordura for durability
- Rear loops for optional mounting on waist webbing
- Fit up to 2 kits per back plate

Kit Includes:

- 1 x mounting baton
- 2 x screws
- 2 x grommets and washers
- 2 x trim pockets

EXPEDITION THIGH POCKET S-TEK



X23.614.000

- Heavy Duty 1000 Cordura
- Stainless Steel Bolt Snap to thigh strap with quick release buckle
- Internal bungee loop
- Fixed quick release buckle

S-TEK BOLT SNAPS



The Scubapro S-TEK Bolt Snaps come in a full range of high quality Stainless Steel, laser etched designs:

- Trigger Bolt Snap
- Eye Bolt Snap Extra Small, Small and Large
- Flat Eye Bolt Snap
- Big Eye Bolt Snap
- Double Bolt Snap Medium and Large

Trigger Snap 13mm...X01.130.000
XS 10mm...X01.131.010
S 14mm...X01.131.014
L 25mm...X01.131.025
Double M 105mm...X01.132.105
Double L 125mm...X01.132.125
Flat Eye 25mm...X01.133.025
Big Eye 36mm...X01.134.036

S-TEK STAGE KITS



X23.612.040

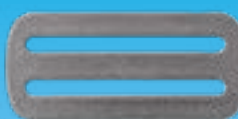


Low Profile Stage Kit Includes:

- 2 Sizes 40 and 80
- 25mm Webbing
- Stainless Steel bolt snaps
- Stainless Steel Hose Clamp
- Hose Retention Bands x 2
- Tubular Webbing On Clamp

Stage Kit Low Profile 40...X23.612.040
Stage Kit Low Profile 80...X23.612.080

S-TEK D-RINGS AND RETAINERS



The Scubapro S-TEK D-Rings and Retainers come in a full range of high quality Stainless Steel designs:

- 50mm Tri Glide Stainless Steel Retainer
- 50mm Quad Glide Stainless Steel Retainer
- 50mm x 5mm Stainless Steel D-Ring
- 50mm x 5mm Pre-Bent Stainless Steel D-Rings

Tri-Glide 50mm...X01.082.050
Quad-Glide 50mm...X01.087.050
Pre-Bent...X01.080.190
Straight...X01.080.091

S-TEK



SIDEMOUNT



X21.726.200

- Modular approach.
- Compact air cell offers 12kg of lift.
- Fully adjustable harness system.
- Air cells include a crotch strap.
- Soft Airnet finished backpack.
- Stainless steel grommets, D-rings and handles.
- New dump valve, corrugated hose and Balanced Power inflator (BPI)
- Elbow and side bungees.

FORM HARNESS



w/o Backplate, w/o crotch strap...X23.806.000

- Shoulder straps adjust in length & alignment
- 50mm crotch strap with 2 stainless steel D-rings
- 6 Large & 6 regular stainless steel D-rings
- Anatomically optimized back padding
- 3 Piece comfort-harness-system
- Stainless steel back plate

SOFT TRAVEL BACKPLATE



X23.807.000

- Replaces metal backplate
- Includes 2 x super cinch tank straps
- Only compatible with FORM harness

BACKPLATE STORAGE PACK



X23.808.000

WEIGHT POCKETS



X23.803.000

- Weight pocket system w. quick release buckle & D-ring

BACKPLATE



Stainless Steel...X23.800.000
Aluminum...X23.801.000

- Available in stainless steel or lightweight aluminum

SHOULDER PADS



X23.809.000

- Shoulder pads for ultimate comfort



CONSOLE 3 SLIM

SCUBAPRO



X05.011.753

- Compact pressure gauge 400bar w. brass case
- Oil-filled analog depth gauge w. linear Bourdon tube design
- 35-degree tilt, oil-filled compass

CONSOLE 2

SCUBAPRO



X05.012.210

- Pressure gauge 400bar
- Depth gauge 60m with parabolic scale & maximum depth indicator
- Lightweight & compact
- Loop on case to attach a safety lanyard
- Fluorescent dials

PRESSURE METAL GAUGE

SCUBAPRO



X05.023.112

- Rated to 400bar
- Low Pressure 50bar red area for easy visibility
- Luminous dial for visibility, even in low-light
- Robust nylon protective housing
- 90cm HP Hose

FS-2 COMPASS

SCUBAPRO



X05.017.001



X05.017.111



X05.017.121

- Northern & Southern hemispheres compatible

FS-2 Capsule only...X05.017.001
FS-2 w. Mount for Retractor...X05.017.111
FS-2 w. Mount & Retractor...X05.017.121

DIGITAL 330M

SCUBAPRO



Wrist Mount...X05.014.110



Capsule only...X05.014.010

Electronic data delivery system provides actual & maximum depth, ascent speed, dive time & temperature. Rated to 330m

CB-TWO IN LINE

SUUNTO



FSS005249220

- Depth gauge 70m
- Pressure gauge 300bar
- Modular housing

CB-TWO IN LINE ZOOPO NOVO

SUUNTO



Lime...FSS022217000
Black...FSS022218000

- Zoopo Novo dive computer
- Pressure gauge 300bar
- Modular housing

CB-ONE

SUUNTO



FSS005240200

- Console housing & hose
- SM-36 pressure gauge 300bar

BOOT & BUNGEE CORD

SUUNTO

- for SK7 & SK8



FSS020627000

SK-8

SUUNTO

Wrist Compass NH...FSS020981000
Wrist Compass SH...FSS020982000

Bungee Mount NH...FSS021118000
Bungee Mount SH...FSS021119000

- High tilt compensation
- Phosphorescent compass card

CB-71 / SK-8

CONSOLE MOUNT

SUUNTO

NH - Back...FSS021123000
SH - Back...FSS021161000

NH - Front...FSS021122000
SH - Front...FSS021160000

- High tilt compensation
- Phosphorescent compass card

CLIPPER

COMPASS

SUUNTO

FSS004102011

- Liquid filled compass
- Rotating bezel with 10 degree increments
- A fun, super-compact aid for underwater navigation
- Fits to almost any watch strap or wrist strap, sleeve, backpack strap, etc.

CONSOLE 2

SLIMLINE

DEEPBLUE

DBT30030

- Robust & compact console
- PG nickel plated brass, 0-300bar
- DG w. luminous display, 70m
- Easy to read
- HP hose included

CONSOLE 2

MINI 2K

DEEPBLUE

DBT30026

- Sleek & compact console
- Slimline PG 0-400bar
- DG w. luminous display, 70m
- Easy to read
- HP hose included

HOUSING

CONSOLE MINI 2K

DEEPBLUE

DBT30026E

SPG

MINI 2K

DEEPBLUE

DBT30013

- Sleek & compact
- Low profile boot
- Slimline PG 0-400bar

SPG 2010 MINI 2K

DEEPBLUE

DBT30038-K DBT30038-W DBT30038-KK

- Yellow Dial w. Black Boot... DBT30038-K
- Yellow Dial w. White Boot... DBT30038-W
- Black dial w. Black Boot... DBT30038-KK

CAPSULE

DEEPBLUE

DBT30009

DBT30001

- Capsule for Pro Compass... DBT30001
- Capsule for Standard Compass... DBT30009

STANDARD COMPASS



DBT30008

- Large tilt potential and still respond quickly and accurately
- High strength magnets for fast stabilization
- Bold numbers for ease of reading
- Firm-grip ratcheting bezel
- Luminescent compass card
- Oil filled
- Easy to read lubber line
- Top or side reading
- Diameter 60mm

PRO COMPASS



DBT30002

- Exceptional tilt allows the compass to be held at an angle of up to 30degree and still respond quickly and accurately
- High strength magnets for fast, positive action
- Bold numbers for ease of reading
- Firm-grip ratcheting bezel
- Luminescent floating card
- Filled with liquid silicone
- Easy to read lubber line
- Top or side reading
- Diameter 56mm

TECH/SIDEMOUNT SUBMERSIBLE PRESSURE GAUGE



NEW



DBT130050/02

- 400 bar brass submersible pressure gauge capsule
- Protective rubber boot
- 200mm high pressure hose
- Luminous dial
- Designed for tech and side mount diving

PRESSURE GAUGES CAPSULE



X05.012.012

X05.022.012

X28.039.302

X28.152.002

X28.152.202



X28.163.002

X28.163.202



FSS05108M200



DBT30012



DBT30039NS



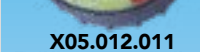
SAP-0018

U-Line PG...X05.012.012
U-Line Metal PG...X05.022.012
Compact Press. Gauge...X28.039.302
PG capsule-Dia 52mm-Black Dial...X28.152.002
PG capsule-Dia 52mm-White Dial...X28.152.202
PG capsule-Dia 63mm-Black Dial...X28.163.002
PG capsule-Dia 63mm-White Dial...X28.163.202
SM-36/300 PG Module...FSS05108M200
PG for Mini 2K - 48mm dia...DBT30012
PG for Slimline - 52mm dia...DBT30039NS
Miniature SPG (Pony Gauge) ...SAP-0018

DEPTH GAUGES CAPSULE



X28.860.005



X05.012.011



DBT30040C



DBT30007



BS226001



FSS05040M010



FSS05040M020

Compact Depth Gauge...X28.860.005
U-Line DG...X05.012.011
Depth Gauge for Slimline...DBT30040C
Depth Gauge for Mini 2K...DBT30007
Depth Gauge Module...BS226001
SM-16/45 Depth Module...FSS05040M010
SM-16/70 Depth Module...FSS05040M020

COMPASS CAPSULE



- SK-8 Replacement Compass Capsule

SK-8 Capsule NH...FSS021120000
SK-8 Capsule SH...FSS021121000



GALILEO G2



X05.081.111



X05.080.101



Intuitive, reliable & bulletproof, SCUBAPRO has combined everything you love about the Galileo with everything you've dreamed of in a dive computer. It's everything you expect from SCUBAPRO in full colour

Easy to read, Easy to use, Easy to love

Spend less time reading manuals & more time enjoying the experience

Easy to manage

- Bluetooth compatible, the G2 easily syncs with your PC, Mac, Android or iOS
- Stores up to 1,000hrs of dive profiles
- Rechargeable battery lasts up to 50 dives

Make it your own

- Customize your screen, colours, orientation & even the attachments to make the G2 truly your own
- Customized menu listings give you the ability to use as much or as little of the technology as you want; with easy activation of freediving, trimix, CCR & sidemount modes without downloading or upgrading
- The G2 is targeted to quickly become the favorite computer for all divers of all skill levels & goes wherever your passion for diving takes you
- Even your dive profile is one of a kind-based upon your real-time breathing rate, your skin temperature & your heart rate

Galileo G2 Wrist Only...X05.080.101
Galileo G2 Console...X05.081.111

ACCESSORIES

Transmitter LED smart+



X05.055.030

D6i NOVO & ZULU



Black



Black Nylon

Blue Nylon

- Steel case & sapphire crystal glass with anti-reflective coating
- Full continuous decompression algorithm - Suunto RGBM
- Gas-switching between up to three gases
- Five modes: air, nitrox, gauge, free & off
- Innovative apnea timer & timer in air/nitrox modes
- Integrated tilt-compensated 3D digital compass
- Updateable firmware
- Optional wireless air integration - current cylinder pressure, remaining air time
- Built-in dive planner
- Detailed graphical logs & dive data on your PC/Mac using PC/MAC with Suunto DM5 software & USB cable

Black...FSS021956000

Black w. Nylon Strap...FSS022617000

Blue w. Nylon Strap (for Instructor)...FSS022910000

DIVE COMPUTER ACCESSORIES



Boot & Bungee Cord



Tank Pod for Eon Core,
Eon Steel, D5



Transmitter LED
for DX, D9tx, D6i, D4i, Vytex,
Vyper Air & HelO2

Tank Pod Transmitter...FSS020306000

EON Steel Scratch Guard (1 Piece)...FSS021027000

Tank Pod Battery Kit...FSS020308000

Bungee Adapter EON Steel...FSS020309000

Boot for EON Steel...FSS020310000

EON Elastomer Strap Replacement Kit...FSS020311000

SUUNTO Charger...FSS018799000

Boot & Bungee Cord...FSS020628000

Transmitter LED...FSS019098000



D5

SUUNTO

All-Black...FSS050192000
 Black/Lime...FSS050191000
 Black...FSS050190000
 White...FSS050181000
NEW! Copper...FSS050569000



Black



All-Black



Black/Lime



White



Copper

NEW

- Easy to read (High contrast colour screen with large numbers)
- 3 modes: Air, nitrox, freedive and gauge
- Vibration alarms
- Rechargeable battery (10-20 hrs of dive time with one charge)
- Connect over Bluetooth to Suunto App
- Updatable software
- Integrated tilt-compensated 3D digital compass
- Wireless air integration (Optional)
- Suunto FusedTM RGBM2 for maximum dive time
- Reinforced composite case rated to 100 m depth
- User exchangeable straps (multiple optional straps available)

D4i

SUUNTO



Black



Lime



White

- Soft silicone strap
- Metal buttons
- Full continuous decompression algorithm
- Three dive modes: air, nitrox, free
- Innovative apnea timer
- Optional wireless air integration (Transmitter)
- Detailed graphical logs on PC/MAC with Suunto DM5 software & USB cable
- Updateable firmware
- USB interface cable sold separately - Black, Lime & White

Black...FSS050277000
 Lime...FSS050279000
 White...FSS050278000

D5 STRAPS DESIGNED FOR DIVING

SUUNTO



FSS050208000



FSS050206000



FSS050207000



FSS050240000



FSS050241000



FSS050242000



FSS050243000



FSS050244000



FSS050263000



FSS050264000



FSS050265000



FSS050229000



FSS050228000

DIVE 1 Silicone Strap, Lime/Black, M...FSS050208000
 DIVE 1 Silicone Strap, Black/Steel, M...FSS050206000
 DIVE 1 Silicone Strap, White/Steel, M...FSS050207000
 DIVE 1 Silicone Strap, Blue/Black, M...FSS050240000
 DIVE 1 Silicone Strap, Sakura/Black, M...FSS050241000
 DIVE 1 Silicone Strap, Ocean/Black, M...FSS050242000
 DIVE 1 Silicone Strap, Coral/Black, M...FSS050243000
 DIVE 1 Silicone Strap, Amber/Black, M...FSS050244000
 DIVE 2 Textile Zulu Strap, Black/Black, L...FSS050263000
 DIVE 2 Textile Zulu Strap, Stealth/Black, L...FSS050264000
 DIVE 2 Textile Zulu Strap, Blue/Black, L...FSS050265000
 EXPLORE 2 Textile Strap, Black/Black, M+L...FSS050228000
 EXPLORE 2 Textile Strap, Foliage/Grey, M+L...FSS050229000

D4i NOVO BLACK LIMITED EDITIONS

SUUNTO



Lime

- Full continuous decompression algorithm - Suunto RGBM
- Four modes: air, nitrox, free and off
- Innovative apnea timer, and a timer in air/nitrox modes
- Built-in dive planner
- Detailed graphical logs and dive data on your PC/Mac using Suunto DM5 software
- Updateable firmware
- USB Cable and Extension strap Included
- Optional wireless air integration - current cylinder pressure, remaining air time

Lime w. USB Limited Edition...FSS020395000

D5 STRAPS DESIGNED FOR EVERYDAY WEAR

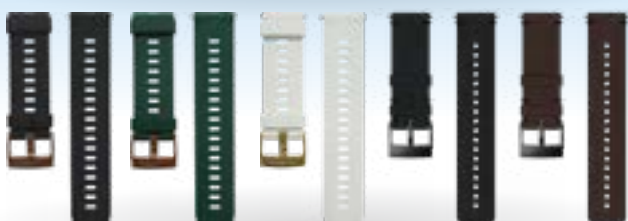
SUUNTO



FSS050012000 FSS050220000 FSS050221000 FSS050222000 FSS050223000



FSS050155000 FSS050156000 FSS050157000 FSS050158000 FSS050013000



FSS023313000 FSS023314000 FSS023485000 FSS050231000 FSS050232000

EXPLORE 1 Silicone Strap, Amber/Gray, M...FSS050012000
EXPLORE 1 Silicone Strap, Coral/Gray, M...FSS050220000
EXPLORE 1 Silicone Strap, Black/Black, M...FSS050221000
EXPLORE 1 Silicone Strap, Graphite/Gray, M...FSS050222000
EXPLORE 1 Silicone Strap, Sandstone/Gray, M...FSS050223000
ATHLETIC 3 Silicone Strap, Black/Steel, M...FSS050155000
ATHLETIC 3 Silicone Strap, White/Steel, M...FSS050156000
ATHLETIC 3 Silicone Strap, Lime/Black, M...FSS050157000
EXPLORE 2 Silicone Strap, Black/Black, M...FSS050158000
EXPLORE 3 Silicone Strap, Stealth/Black, M...FSS050013000
ATHLETIC 4 Silicone Strap, Black/Copper, M...FSS023313000
ATHLETIC 4 Silicone Strap, Forest/Copper, M...FSS023314000
ATHLETIC 4 Silicone Strap, White/Gold, M...FSS023485000
URBAN 2 Leather Strap, Black/Black, M...FSS050231000
URBAN 2 Leather Strap, Brown/Black, M...FSS050232000

VYPER NOVO

SUUNTO



White

Graphite

- Optional wireless air integration – current cylinder pressure, remaining air time
- Integrated tilt-compensated 3D digital compass
- Gas-switching between up to three gases (Oxygen up to 99 %)
- Cable optional for connecting to detailed graphical logs & dive data with your PC/Mac using Suunto DM5 software
- Full continuous decompression algorithm – Suunto RGBM
- Five modes: air, nitrox, gauge, free & off
- Innovative apnea timer for free diving & a timer in air Nitrox modes
- Built-in dive planner

White...FSS050433000
Graphite...FSS050434000

EON CORE

SUUNTO



Lime

White

Black

- User configurable Custom Display with up to 4 screens per mode
- Flip display option
- Wireless connectivity via Bluetooth
- Up to 10 tank pressure readings with Suunto Tank PODs
- User-updatable software
- Lightweight (154g) reinforced composite case rated to 80m (EON Steel = 347g)
- Modes: Air/Nitrox/Gauge/Trimix/CCR (fixed point)
- Suunto Fused™ RGBM2 decompression model
- Tilt compensated 3D digital compass
- Rechargeable lithium-ion battery 930 mAh (10-20hrs diving)
- PC/MAC with Suunto App & USB cable
- 17 languages

Lime...FSS023082000
White...FSS023081000
Black...FSS022740000

ZOOP NOVO

SUUNTO



Blue

Lime

Black

- Five modes: air, nitrox, gauge, apnea & off
- Full continuous decompression algorithm - Suunto RGBM
- Built-in dive planner
- Detailed graphical logs & dive data with your PC/Mac using Suunto DM5 software (no cable in the package – sold as an accessory)
- Innovative apnea timer for freediving & timer in air/nitrox modes

Lime...FSS021643000
Blue...FSS021644000
Black...FSS021645000
Rental, Lime...FSS022692000

SUUNTO

Dive Computers

23

SUUNTO EON STEEL BLACK

Explore like
never before.

Highly durable dive computer equipped with two algorithms, the Suunto Fused™ RGBM 2 and Bühlmann 16 with Gradient Factors, rechargeable battery and wireless mobile connection. Suunto EON Steel Black Made for Divers by Divers the choice is yours.



- Stainless steel Bezel
- Xensation Glass
- Reinforced composite Case
- Elastomer or Bungee Strap
- Upgradeable Firmware
- Rechargeable Lithium-ion Battery
- 18 Languages: EN, CS, DA, DE, ES, FI, FR, IT, JA, KO, NL, NO, PL, PT, RU, SV, TW, ZH
- Configurable LED Backlight
- Flip Color TFT Display
- Smartphone Compatible
- Can connect to up to 20 tank pods (Optional)
- Compatible with Suunto DM5 Software
- Bluetooth Smart / USB cable Connectivity (Cable Included)
- Compatible with Suunto App.
- Compatible with Suunto Link
- Digital Compass: Up to 45° Tilt Compensation Globally Balanced
- Maximum Operating depth 150 m
- Dive Modes: Rebreather (CCR) fixed point, Trimix (mixed gas), Nitrox (and air) and Gauge
- Altitude Adjustment: 0 - 300 m / 300 -1500 m / 1500 - 3000 m
- Up to 20 gases (Oxygen 5 - 99% / Helium 0 -95%)
- Gas max pO2 manual 0.5 - 1.6 / fixed 1.6
- Logbook Memory 200h or 400 dives which comes first
- Dive History; lifetime
- Dual Decompression Model: Suunto Fused™ RGBM 2 and Bühlmann 16 GF
- Personal Adjustments: P+2, P+1, P0, P-1, P-2 and Gradient factors low (10-100) and high (50-100)

ITEM CODE: FSS050558000



	D4i	D5	D6i Novo
Glass material:	Mineral crystal	Mineral crystal	Sapphire crystal
Case material:	Composite	Reinforced composite	Steel
Strap material:	Silicone	Silicone	Silicone / metal
Water resistance	100 m	100 m (ISO 6425, EN 13319)	150 m
Battery life in time mode	2 years	-	2 years
Battery life 100 dives/year	1.5 years	-	1.5 years
Battery type	CR 2450	rechargeable lithium-ion	CR 2450
UI languages	EN	EN, FR, ES, IT, NL, PT, SV, FI, RU, PL, KO, ZH, DE, NO, CS, DA, JA, ZH, TW	EN
Backlight	electro-luminescent	LED	electro-luminescent
Configurable backlight	duration: off, 5, 10, 20, 30, 60 s	yes	duration: off, 5, 10, 20, 30, 60 s
Firmware upgradable	yes	yes	yes
User replaceable battery	-	-	-
Digital compass	-	yes	yes
Tilt compensation	-	up to 45°	up to 45°
Maximum operating depth(EN 13319)	100m	100 m / 328 ft (EN 13319, ISO 6425)	120m
Nitrox (and air)	yes	yes	yes
Freedive	yes	yes	yes
Gauge	yes	yes	yes
Dive time	0 to 999 min	0 to 999 min	0 to 999 min
Wireless air integration	optional	optional (up to 3 different tanks with Suunto Tank POD)	optional
Decompression model	RGBM	Suunto Fused™ RGBM 2	RGBM
Personal adjustment	0 - 2	P+2, P+1, P0, P-1, P-2	0 - 2
Altitude adjustment	0-300m / 300-1500m /1500-3000m	0-300m / 300-1500m /1500-3000m	0-300m / 300-1500m /1500-3000m
Gases	1 gas (O2 21 - 50%)	up to 3 gases (Oxygen 21 - 99%)	up to 3 gases (O2 21 - 99%)
Gas max pO2	1.2 - 1.6	1.6	1.2 - 1.6
Timer	yes	yes	yes
No-decompression planner	yes	yes	yes
Logbook memory	~140 h (20s sampling rate)	200h or 400 dives which comes first	~140 h (20s sampling rate)
Gas switching	-	yes	yes
Trimix (mixed gas)	-	-	-
Rebreather (CCR)	-	-	-
Custom displays	-	4 per dive mode	-
Dive time	yes	yes	yes
Maximum depth	yes	yes	yes
Tank pressure	yes	yes	yes
Apnea timer (O2/CO2 tables)	yes	-	yes
Diluents	-	-	-



	ZOOP Novo	VYPER Novo	EON Core	EON Steel Black
Glass material:	Acrylic	Acrylic	Mineral crystal	Xensation Glass
Case material:	Composite	Composite	Reinforced composite	Reinforced composite
Strap material:	Elastomer	Elastomer	Elastomer	Elastomer, Bungee
Water resistance	120 m	120 m	80 m	150 m
Battery life in time mode	2 years	2 years	2 months	-
Battery life 100 dives/year	1.5 years	1.5 years	-	-
Battery type	CR 2450	CR 2450	rechargeable lithium-ion	rechargeable lithium-ion
UI languages	EN	EN	EN, CS, DA, DE, ES, FI, FR, IT, JA, KO, NL, NO, PL, PT, RU, SV, ZH	EN, CS, DA, DE, ES, FI, FR, IT, JA, KO, NL, NO, PL, PT, RU, SV, TW, ZH
Backlight	electro-luminescent & phosphor-luminescent	electro-luminescent & phosphor-luminescent	LED	LED
Configurable backlight	duration: off, 5, 10, 20, 30, 60 s	duration: off, 5, 10, 20, 30, 60 s	yes	yes
Firmware upgradable	-	-	yes	yes
User replaceable battery	yes	yes	-	-
Digital compass	-	yes	yes	yes
Tilt compensation	-	up to 45°	up to 45°	up to 45°
Maximum operating depth(EN 13319)	80m	80m	80m	150m
Nitrox (and air)	yes	yes	yes	yes
Freedive	yes	yes	yes	-
Gauge	yes	yes	yes	yes
Dive time	0 to 999 min	0 to 999 min	0 to 999 min	0 to 999 min
Wireless air integration	-	optional	optional	optional
Decompression model	RGBM	RGBM	FUSED RGBM	Suunto Fused™ RGBM 2 Bühlmann 16 GF
Personal adjustment	0 - 2	0 - 2	from -2 to 2	P+2, P+1, P0, P-1, P-2
Altitude adjustment	0-300m / 300-1500m /1500-3000m	0-300m / 300-1500m /1500-3000m	0-300m / 300-1500m /1500-3000m	0-300m / 300-1500m /1500-3000m
Gases	1 gas (O2 21 - 50%)	up to 3 gases (O2 21 - 99%)	up to 10 gases (O2 5 - 99% / Helium 0 -95%)	up to 20 gases (O2 5 - 99% / Helium 0 -95%)
Gas max pO2	1.2 - 1.6	1.2 - 1.6	manual 0.5-1.6/ fixed 1.6	manual 0.5-1.6/ fixed 1.6
Timer	yes	yes	yes	yes
No-decompression planner	yes	yes	yes	yes
Logbook memory	~140 h (20 s sampling rate)	~140 h (20 s sampling rate)	200 h	200h or 400 dives which comes first
Gas switching	-	yes	yes	yes
Trimix (mixed gas)	-	-	yes	yes
Rebreather (CCR)	-	-	yes	yes
Custom displays	-	-	4 per dive mode	4 per dive mode
Dive time	yes	yes	yes	yes
Maximum depth	yes	yes	yes	yes
Tank pressure	-	yes	yes	yes
Apnea timer (O2/CO2 tables)	yes	yes	-	-
Diluents	-	-	up to 10 diluents (O2 5 - 99% / Helium 0 - 95%)	yes

BORA PLUS MASK

DEEPBLUE

Clear Skirt

K BT Y

BEST
SELLER



Black Skirt

K O Y



- Silicone skirt & strap
- Easily replaced twist-on buckles
- Twin lens with tempered glass

Clear Skirt:

Black...DB1MA36+-K
Blue Trans...DB1MA36+-BT
Yellow...DB1MA36+-Y

Black Skirt:

Black...DB1MA36+-KK
Orange...DB1MA36+-KO
Yellow...DB1MA36+-KY

XTREME MASK

DEEPBLUE

Clear Skirt

Blue...DBM282-B
Pink...DBM282-Pi

B Pi



Black Skirt

White...DBM282-KW
Yellow...DBM282-KY

W Y

- Silicone skirt & strap
- Swivel Buckles
- Twin lens w. tempered glass

BALI MASK

DEEPBLUE



DBMA69-KK

- Single lens w. tempered glass
- Silicone skirt & strap
- Swivel buckles
- Extra low volume

HAWAII MASK

DEEPBLUE

Clear Skirt

BT Y



- Replaceable standard buckles
- Twin lens w. tempered glass
- PVC skirt & strap

Clear Skirt:

Blue Trans...DB3MD05P-BT
Yellow...DB3MD05P-Y

ORCA MASK

DEEPBLUE

Black Skirt

Y



Clear Skirt

B Pi



- Silicone skirt & Unique Elastomer strap
- Replaceable skirt-mounted buckles
- Twin lens w. tempered glass
- Low volume

SUPER COMFORTABLE

Black Skirt:

Yellow...DBMD89-KY

Clear Skirt:

Blue...DBMD89-B
Pink...DBMD89-Pi

FIJI FOR KIDS

DEEPBLUE

Silicone Skirt

BT PIT Y

Blue Trans...DB8MB52-BT
Pink Trans...DB8MB52-PIT
Yellow...DB8MB52-Y



PVC Skirt

BT PIT Y

Blue Trans...DB4MB52P-BT
Pink Trans...DB4MB52P-PIT
Yellow...DB4MB52P-Y



Silicone Skirt w. Clamshell

BT PIT Y

Blue Trans...DB8MB52CL-BT
Pink Trans...DB8MB52CL-PIT
Yellow...DB8MB52CL-Y



- Silicone or PVC skirt & strap
- Replaceable clip-on buckles
- Single lens w. tempered glass
- Ideal for rental & retail

MAKO MASK

DEEPBLUE

Clear Skirt

BT Y



Black Skirt

K



- Silicone skirt & strap
- Easily replaced clip-on buckles
- Twin lens with tempered glass

Clear Skirt:

Blue Trans...DBMC23-BT
Yellow...DBMC23-Y

Black Skirt:

Black...DBMC23-KK

COVERT MASK

DEEPBLUE

Black Skirt:

Black...DBMC24-KK
Blue...DBMC24-KB
Pink...DBMC24-KPi
White...DBMC24-KW

K B Pi W



White Skirt:

White...DBMC24-WW

W



CAMO Skirt
CAMO...DBMC24-CA

NEW

- Silicone skirt & strap
- Swivel buckles
- Twin lens w. tempered glass
- Extra low volume

VYPER MASK



DBMD56-KK

- Silicone skirt & strap
- Replaceable clip-on buckles
- Single lens w. tempered glass
- Extra low volume

ACCENT MASK



DBMG01-KY

- Single lens w. tempered glass
- Ultra Soft Silicone skirt (Black matte)
- Silicone strap (Black)
- Standard buckles, easy to adjust
- Available in Black/Yellow w. Black Skirt

FULL FACE SNORKELLING MASK



Size S, Blue...DBFfaceS-B
Size S, Pink...DBFfaceS-Pi
Size L, Blue...DBFfaceL-B
Size L, Pink...DBFfaceL-Pi

- EASY BREATHING - Natural breathing through the nose or mouth
- EASY DRESSING - Adjustable elastic textile strap
- ANTI-FOGGING - An exclusive air circulation concept, that prevents the formation of fog
- WATERPROOF - The "Dry Top" snorkel system limits water entry through the top of the snorkel
- FIELD OF VISION - Panoramic field of vision
- WATER DRAINAGE - Purge valve at the bottom of the mask, to drain water when the head is raised
- Action camera mount
- Sizes: S, L

CORAL MASK



DBMCORAL

- Single lens w. tempered glass
- Silicone skirt & strap (Clear)
- Standard buckles, easy to adjust
- Available in Turquoise w. colourful coral motive

MAUI MASK



Blue...DBME60-B
Pink...DBME60-Pi
Yellow...DBME60-Y
White...DBME60-W
Black...DBME60-K

- Swivel buckles
- Extra low volume
- Silicone skirt & strap
- Single lens w. tempered glass
- Available in blue, pink & yellow

D MASK

NEW



X24.252.101

X24.252.102

X24.252.103



X24.252.104

X24.252.105

X24.255.xxx

- Sleek design matches the new D420 regulator
- UV+420cut™ lens technology filters out HEV and UV light without affecting how colors appear
- Interchangeable lens system makes it easy to install optional optical lenses
- Available with a choice of skirts to suit western or Asian dive markets as well as divers with small face shapes
- Rotating buckles work with a new black-on-black Comfort Strap to optimize range of motion and achieve a comfortable, watertight fit
- Includes an adapter for mounting a HUD hands-free dive computer
- Packaged in a durable molded fabric transport box.
- Optional lenses available: Optical lenses (6x positive +1.5 to +4.0/8x negative -1.5 to -5.0); Bi-Focus lenses (3x positive +1.0 to +3.0)

D Mask, Black Asian ...X24.250.300
Color Kit, Black...X24.252.101
Color Kit, Blue...X24.252.102
Color Kit, Turquoise...X24.252.103
Color Kit, Pink...X24.252.104
Color Kit, Yellow...X24.252.105

Bifocus Lens fit Left, D-Masks, +1.0 to +3.0...X24.255.0xx
Bifocus Lens fit Right, D-Masks, +1.0 to +3.0...X24.255.1xx

SPECTRA METALLIC MASK



Black Skirt:
Full Black...X24.847.100
Black/Silver...X24.847.130
Solid Blue...X24.847.230
Bronze...X24.847.830



Black Skirt
w. Mirror Lens:
Black...X24.847.140
Bronze...X24.847.840



Clear Skirt:
Blue...X24.847.210

- Silicone skirt & strap
- Swivel buckles
- Twin lens w. tempered glass
- Re-usable mask box included

SYNERGY TWIN TRUFIT MASK

Tq
R



Black Skirt

- Tru-fit silicone skirt (extra soft & super comfortable)
- Silicone mask strap
- Replaceable clip-on buckles
- Twin lens with tempered glass
- Low volume & provides excellent field of view
- Re-usable mask box included

Black Skirt w. Mirror Lens



K

Black Skirt:
Turquoise...X24.713.230
Red...X24.713.310

Black Skirt w. Mirror Lens:
Black...X24.713.140

STEEL COM MASK

SCUBAPRO



K W

POPULAR FOR APNEA

- Silicone skirt & strap (ultra soft)
- Unique collapsible frame
- Swivel buckles
- Nose pocket w. anti-slip
- Twin lens w. tempered glass
- Extra low volume
- Ideal for APNEA

Black...X24.108.100
White...X24.108.600

SYNERGY TWIN TRUFIT MASK w. COMFORT STRAP

SCUBAPRO



Black Skirt



Black Skirt w. Mirror Lens

Black Skirt:
Silver...X24.813.130
Red...X24.813.310
Yellow...X24.813.510
Solid Pink...X24.813.730
Turquoise...X24.813.230

SI R

Y P Tq

Black Skirt w. Mirror Lens:
Silver...X24.813.140

SI

- Tru-fit silicone skirt (extra soft & super comfortable)
- Comfort strap
- Replaceable clip-on buckles
- Twin lens with tempered glass
- Low volume & provides excellent field of view
- Re-usable mask box included

TRINIDAD MASK

SCUBAPRO



K

- Silicone skirt & strap
- Swivel buckles
- Single lens w. tempered glass
- Frameless, low-volume design
- Re-usable mask box included

X24.156.100

SYNERGY 2 TRUFIT MASK w. COMFORT STRAP

SCUBAPRO



Black Skirt



Black Skirt w. Mirror Lens

Black Skirt:
Silver...X24.839.130

SI

Black Skirt w. Mirror Lens:
Silver...X24.839.140

SI

- Tru-fit silicone skirt (extra soft & super comfortable)
- Comfort strap
- Swivel buckles
- Single lens with tempere-glass
- Low volume & provides excellent field of view
- Re-usable mask box included

SOLO MASK

SCUBAPRO



K

- Silicone skirt & strap
- Swivel buckles
- Single lens w. tempered glass
- Extra low volume
- Re-usable mask box included

X24.849KS

CRYSTAL VU METALLIC MASK

Black Skirt

O SI

SCUBAPRO



Clear Skirt

B R W Y



Black Skirt:
Orange...X24.855.810
Silver...X24.855.110

Clear Skirt:
Blue...X24.855.200
Red...X24.855.300
White...X24.855.700
Yellow...X24.855.500

- Silicone skirt & strap
- Swivel buckles
- Single lens with seamless side windows & tempered glass
- Re-usable mask box included

FRAMELESS MASK

SCUBAPRO



K

- Large, teardrop-shaped Ultra Clear lenses
- Soft silicone skirt uses a double-seal system
- Traditional buckles attach to the skirt
- Wide headband allows for a comfortable fit

X24.350.110



ZOOM MASK

NEW

SCUBAPRO



Black Skirt



White Skirt



X24.595.XXX

BIFOCUS LENS FINO/ZOOM Masks



X24.595.4XX

Lens Left or Right:

Prescription Lens -1.5 to -8.0...X24.595.4xx

BIFOCUS LENS:

Left side only, +1.00...X24.595.200
Left side only, +2.00...X24.595.203
Left side only, +3.00...X24.595.204
Right side only, +1.00...X24.595.300
Right side only, +2.00...X24.595.303
Right side only, +3.00...X24.595.304

Black Skirt:

Black/Silver...X24.157.001
Blue/Silver...X24.157.002
Yellow/Black...X24.157.005
Red/Black...X24.157.006
Pink/Black...X24.157.007

White Skirt:

White/Silver...X24.157.011

Color Kit:

Black/Silver...X24.157.101
Blue/Silver...X24.157.102
Yellow/Silver...X24.157.103
Silver...X24.157.104
Yellow/Black...X24.157.105
Red/Black...X24.157.106
Pink/Black...X24.157.107
Turquoise/Black...X24.157.108
Purple/Black...X24.157.109

- Quick lens change system
- Twin ultra clear no tint glass lenses
- Low volume design
- Easy adjust quick release buckles

MARINA KIDS MASK

SEAC



B P I Y

Blue...B9426-B
Pink...B9426-P
Yellow...B9426-Y

- Silicone skirt & strap
- Replaceable standard buckles
- Single lens w. tempered glass
- Packaging: plastic mask box

RUNNER JUNIOR MASK

SAFARI



BT FG Y

Blue Trans...SMS102-BT
Neon Green...SMS102-FG
Yellow...SMS102-Y

- Silicone skirt & strap
- Replaceable twist-on buckles
- Single lens w. tempered glass

RUNNER MASK

BEST SELLER

SAFARI



Clear Skirt

BT C K Y

Black Skirt

BT G K Y

ALL TIME FAVORITE

Clear Skirt:

Blue Trans...S1083S-BT
Clear...S1083S-C
Black...S1083S-K
Yellow...S1083S-Y

Black Skirt:

Blue Trans...S1083KS-BT
Green...S1083KS-G
Black...S1083KS-K
Yellow...S1083KS-Y

- Silicone skirt & strap
- Replaceable standard buckles
- Twin lens w. tempered glass
- Optical Lenses available

WIDE VISION MASK LARGE FIT-BLACK

SAFARI



K

- Silicone skirt & strap
- Replaceable standard buckles
- Single lens w. tempered glass
- High volume, wide vision

SMM108KS-K

CAPRI MASK

SEAC



K

Black Skirt:
Black...B9421KS-K

Clear Skirt:
Blue...B9420-B
Black...B9420-K

- Silicone skirt & strap
- Replaceable standard buckles
- Twin lens w. tempered glass
- Packaging: plastic mask box

EXTREME MASK FOR SMALL FACES

SEAC



Black Skirt:
Black...B936KS-K

K

Clear Skirt:
Blue...B939-B
Yellow...B939-Y

B YT

- Silicone skirt & strap
- Easy adjustable buckles
- Twin lens w. tempered glass
- Re-usable mask box included

DEEP DOWN
YOU WANT THE BEST

SCUBAPRO

FRAMELESS MASK



K

- Silicone skirt & strap
- Replaceable standard buckles
- Extra low volume
- Ideal for APNEA
- Single lens w. tempered glass

SMM107KS

PRO EAR 2000 MASK



K

- Silicone skirt & strap
- Replaceable standard buckles
- Twin lens w. tempered glass
- Complete ear protection

MPE10

DIVE OPTX Flexible Mask Magnifier Kit



TFM98 +1.00
TFM98 +1.50
TFM98 +2.00
TFM98 +2.50
TFM98 +3.00

- Available from +1.0 through +3.0 diopter in 0.5 increments

STEALTH MASK



K

- Silicone skirt
- 'Easy-adjust' buckles
- Twin lens
- Curved lenses (180-Degree field of vision)
- Extreme Low volume

SM205KS-K

OPTICAL LENSES

S1083OP



Myopia Lens:

Lens -1.0...S1083OP-1.0
Lens -1.5...S1083OP-1.5
Lens -2.0...S1083OP-2.0
Lens -2.5...S1083OP-2.5
Lens -3.0...S1083OP-3.0
Lens -3.5...S1083OP-3.5
Lens -4.0...S1083OP-4.0
Lens -4.5...S1083OP-4.5
Lens -5.0...S1083OP-5.0
Lens -5.5...S1083OP-5.5
Lens -6.0...S1083OP-6.0
Lens -6.5...S1083OP-6.5
Lens -7.0...S1083OP-7.0
Lens -8.0...S1083OP-8.0
Lens -9.0...S1083OP-9.0
Lens -10.0...S1083OP-10.0

Distance (-)
(Myopia)



Close (+)
(Presbyopia)
S1083P6

Bi-Focal Lens:

Lens -2/+1 Left...S1083P6L-2/1L
Lens -2/+2 Left...S1083P6L-2/2L
Lens -3/+1 Left...S1083P6L-3/1L
Lens -2/+1 Right...S1083P6L-2/1R
Lens -2/+2 Right...S1083P6L-2/2R
Lens -3/+1 Right...S1083P6L-3/1R

Myopia Lens (Nearsighted) :

- Available from -1.0 through -7.0 in 0.5 increments
- Available from -7.0 through -10.0 in 1.0 increments

Bi-Focal Presbyopia Lens :

Myopia Lens	Presbyopia Lens		
-1.0	+1.0	+2.0	+3.0
-2.0	+1.0	+2.0	-
-3.0	+1.0	-	-



MANTA PLUS SNORKEL



Clear Mouthpiece:

Blue Trans...DB1SA106-BT
Yellow...DB1SA106-Y



Black Mouthpiece:

Black...DB1SA106-KK
Orange...DB1SA106-KO
Yellow...DB1SA106-KY



- Comfortable silicone mouthpiece
- Purge valve for effortless clearing
- Semi-dry top design prevents water entry into tube
- Standard universal snorkel keeper
- PVC Flex tube

MARLIN SNORKEL



Clear Mouthpiece:

Blue Trans...DBSA91-BT
Clear...DBSA91-C
Black...DBSA91-K
Yellow...DBSA91-Y



Black Mouthpiece:

Black...DBSA91-KSK
Yellow...DBSA91-KSY



- Comfortable silicone mouthpiece
- Silicone snorkel holder
- Simple J-Tube

STINGRAY SNORKEL



Clear Mouthpiece:

Blue Trans...DBSA105-BT
Black...DBSA105-K
Yellow...DBSA105-Y



Black Mouthpiece:

Black...DBSA105-KK



- Ergonomic silicone mouthpiece for added comfort
- Purge valve at lowest point for effortless clearing
- Semi-dry top design prevents water entry into tube
- Standard universal snorkel keeper
- Flexible, corrugated joint drops snorkel from face when not in use

SHARKY SNORKEL



Clear Mouthpiece:

Blue Trans...DBSB47-BT
Black...DBSB47-K
Yellow...DBSB47-Y



- Ergonomic silicone mouthpiece for added comfort
- Purge valve at lowest point for effortless clearing
- Semi-dry top design prevents water entry into tube
- Standard universal snorkel keeper
- Flexible, corrugated joint drops snorkel from face when not in use

BALI SNORKEL



Diva Pink...DBSD95-PD
Yellow Mango...DBSD95-YM



- Ergonomic silicone mouthpiece for added comfort
- Purge valve at lowest point for effortless clearing
- Semi-dry top design prevents water entry into tube
- Standard universal snorkel keeper
- Flexible, corrugated joint drops snorkel from face when not in use

CORAL SNORKEL



DBSCORAL

- Comfortable silicone mouthpiece (for kids)
- Purge valve at lowest point for effortless clearing
- Semi-dry top design prevents water entry into tube
- Standard universal snorkel keeper
- Simple J-Tube (for kids)
- Available in Turquoise w. colourful coral motive

MAKO SNORKEL



Clear Mouthpiece:

Blue Trans...DB3SB35-BT
Yellow...DB3SB35-Y



Black Mouthpiece:

Black...DB3SB35-KK



- PVC mouthpiece
- Purge valve at lowest point for effortless clearing
- Semi-dry top design prevents water entry into tube
- Unique strap holder built into the tube
- Simple J-Tube

GOBY SNORKEL



Clear Mouthpiece:

Blue Trans...DBSB36-BT
Green Trans...DBSB36-GT
Pink Trans...DBSB36-PIT
Yellow...DBSB36-Y



- PVC mouthpiece for kids
- Semi-dry top design prevents water entry into tube
- Unique strap holder built into the tube
- Simple J-Tube

DAMSEL SNORKEL



Clear Mouthpiece:

Blue Trans...DB8SA102-BT
Pink Trans...DB8SA102-PIT
Yellow...DB8SA102-Y



- Comfortable silicone mouthpiece
- Purge valve at lowest point for effortless clearing
- Semi-dry top design prevents water entry into tube
- Standard universal snorkel keeper
- Simple J-Tube

COVERT SNORKEL **NEW**



Black...DBSE13-KK
White...DBSE13-WW
CAMO...DBSE29-CA

- 100% Silicone Snorkel
- Foldable - always bounces back into shape
- Silicone mouthpiece
- Silicone snorkel holder

ORCA SNORKEL



Clear Mouthpiece:
Blue...DBSE42-B
Pink...DBSE42-Pi

Black Mouthpiece:
Yellow...DBSE42-KY

- Sealed dry top (100% dry)
- Purge valve at lowest point for effortless clearing
- Soft silicone flex
- Comfortable silicone mouthpiece

XTREME SNORKEL



Clear Mouthpiece:
Blue...DBSN134-B
Pink...DBSN134-Pi

Black Mouthpiece:
White...DBSN134-KW
Yellow...DBSN134-KY

- Sealed dry top (100% dry)
- Purge valve at lowest point for effortless clearing
- Soft silicone flex
- Comfortable silicone mouthpiece
- Standard universal snorkel keeper

SPECTRA SNORKEL



Black Mouthpiece:
Bronze...X26.706.830
Silver...X26.706.130

Clear Mouthpiece:
Blue...X26.706.220
White...X26.706.600
Pink...X26.706.720

DIVE PRO FAVORITE

X26.706

- Ergonomic regulator style mouthpiece for added comfort
- Purge valve at lowest point for effortless clearing
- Semi-dry top design helps prevent water entry into tube
- Quick-release clip for easy removal from mask strap
- Flexible, corrugated joint drops snorkel from face when not in use

BEST SELLER

NEXUS SEMI DRY SNORKEL



Clear Mouthpiece:
Blue...X26.810.220

- Ergonomic regulator style mouthpiece for added comfort
- Angled purge valve directs bubbles out of your sight line
- Splashguard top helps keep water from entering the large bore barrel
- Quick-connect clip makes it easy to attach or remove snorkel from mask strap
- Flexible upper barrel allows snorkel to be folded for storing
- Flexible, corrugated joint drops snorkel from face when not in use

TRINIDAD SNORKEL



X26.070.000

- Semi-dry top design prevents water entry into tube
- Flexible, corrugated joint drops snorkel from face when not in use
- Ergonomic, replaceable high grade silicone mouthpiece
- Purge valve for ease of clearing
- Adjustable snorkel keeper w.removable clip
- Integrated whistle for added safety (NEW)

APNEA SNORKEL



Black...X26.130.000
White...X26.130.600

- Utilitarian - always bounces back into shape
- Silicone mouthpiece
- Lightweight
- Soft tube

STANDARD SNORKEL



Black Mouthpiece:
Black...S1052-K
Yellow...S1052-Y

- Rubber mouthpiece
- PVC snorkel keeper
- Simple J-Tube

VISION HD GOGGLES

SEAC

Blue...B9908-B
Red...B9908-R

B R



- Oversized & durable frame reduces drag
- Comfortable leak-resistant hypoallergenic bio-silicone skirt
- Crystal clear wrap-around lens provides clear 180-degree visibility
- Anti-fog & scratch resistant lenses provide 100% UV protection
- Pulsar buckle system allows for quick strap adjustment with just a touch
- Protective storage pouch

MARINER UV GOGGLES

SEAC

Blue...SK5UV-B
Black...SK5UV-K

B K



- Anti-fog lens w. enhanced peripheral vision
- Soft silicone watertight seal
- Comfortable wrap-around lens provides high visibility
- Quick release buckle system & silicone strap
- Protective storage pouch included
- Anti-fog lens with enhanced peripheral vision & UV protection

EAR PLUGS

SEAC



SE4

- Easy-to-use ear plugs
- Keep your ear canal perfectly dry during water activities
- Helps prevent ear infections
- Made from silicone

Not suitable for SCUBA diving

WAVE GOGGLES

SEAC

Blue...S1281AS-B
Blue Lagoon...S1281AS-BL
Black...S1281AS-K

B
BL
K



- Comfortable silicone seal
- Lenses w. 100% UV protection & anti-fog coating
- Easy adjustable head strap
- Interchangeable nose bridge

WAVE JUNIOR GOGGLES

SEAC

Blue...SS5-B
Black...SS5-K
Yellow...SS5-Y

B
K
Y



- Comfortable silicone seal
- Lenses w. 100% UV protection & anti-fog coating
- Easy adjustable head strap
- Interchangeable nose bridge

NOSE CLIP

SEAC



SN2

- Ideal for swimmers & other water sports
- Comfortable nose clip
- Flexible steel frame with latex pads
- Comfortably pinch the nostrils shut
- Designed to pinch the nose to keep water out
- Weight: 50 grams (including packaging)

DEEP DOWN YOU WANT THE BEST

SCUBAPRO

BORA MASK & SNORKEL SET w. SPEED3 FINS



S-M, Blue...DB1SP3-SM-B
S-M, Black...DB1SP3-SM-KK
S-M, Black/Yellow...DB1SP3-SM-KY
S-M, Orange...DB1SP3-SM-KO
S-M, Yellow...DB1SP3-SM-Y
L-XL, Blue...DB1SP3-LXL-B
L-XL, Black...DB1SP3-LXL-KK
L-XL, Black/Yellow...DB1SP3-LXL-KY
L-XL, Orange...DB1SP3-LXL-KO
L-XL, Yellow...DB1SP3-LXL-Y

- Mask "Bora Plus" w. silicone skirt (Mask details page 27)
- Snorkel "Manta Plus" w. Semi-dry top design (Snorkel details page 32)
- Fins "Speed 3" Adjustable, sizes: S-M, L-XL (Fins details page 37)
- Re-useable large mesh bag with shoulder strap

BORA MASK & SNORKEL SET



Mesh bag:
Blue...DB2Bag-B
Black...DB2Bag-KK
Black/Yellow...DB2Bag-KY
Orange...DB2Bag-KO
Yellow...DB2Bag-Y

Clamshell:
Blue...DB2Clam-B
Black...DB2Clam-KK
Black/Yellow...DB2Clam-KY
Orange...DB2Clam-KO
Yellow...DB2Clam-Y

- Mask "Bora Plus" w. silicone skirt (Mask details page 27)
- Snorkel "Manta Plus" w. Semi-dry top design (Snorkel details page 32)
- Clamshell or re-useable mesh bag

MAKO MASK & SNORKEL SET

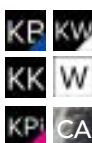


Mesh bag:
Blue Trans...DBMakoB-BT
Black...DBMakoB-KK
Yellow...DBMakoB-Y

Clamshell:
Blue Trans...DBMakoC-BT
Black...DBMakoC-KK
Yellow...DBMakoC-Y

- Mask "Mako" w. silicone skirt (Mask details page 27)
- Snorkel "Mako" w. Semi-dry top design (Snorkel details page 32)
- Clamshell or re-useable mesh bag

COVERT MASK & SNORKEL SET



Mesh bag:
Black/Blue...DBCvtB-KB
Black/Black...DBCvtB-KK
Black/Pink...DBCvtB-KPi
Black/White...DBCvtB-KW
White...DBCvtB-WW
Camo...DBCvtB-CA

Clamshell:
Black/Blue...DBCvtC-KB
Black/Black...DBCvtC-KK
Black/Pink...DBCvtC-KPi
Black/White...DBCvtC-KW
White...DBCvtC-WW
Camo...DBCvtC-CA

- Mask "Covert" w. silicone skirt (Mask details page 27)
- Snorkel "Covert" 100% Silicone (Snorkel details page 33)
- Clamshell or re-useable mesh bag

ORCA MASK & SNORKEL SET



Mesh bag:
Blue...DBOrcB-B
Yellow...DBOrcB-KY
Pink...DBOrcB-Pi

Clamshell:
Blue...DBOrcC-B
Yellow...DBOrcC-KY
Pink...DBOrcC-Pi

- Mask "Orca" w. silicone skirt (Mask details page 27)
- Snorkel "Orca" 100% Silicone (Snorkel details page 33)
- Clamshell or re-useable mesh bag

XTREME MASK & SNORKEL SET



Mesh bag:
Blue...DBXtrB-B
White...DBXtrB-KW
Yellow...DBXtrB-KY
Pink...DBXtrB-Pi

Clamshell:
Blue...DBXtrC-B
White...DBXtrC-KW
Yellow...DBXtrC-KY
Pink...DBXtrC-Pi

- Mask "Xtreme" w. silicone skirt (Mask details page 27)
- Snorkel "Xtreme" w. Dry Top (Snorkel details page 33)
- Clamshell or re-useable mesh bag



HAWAII MASK & SNORKEL SET



Mesh bag:
Blue Trans...DB3Bag-BT
Yellow Trans...DB3Bag-YT



- Mask "Hawaii" w. PVC skirt (Mask details page 27)
- Snorkel "Mako" w. Semi-dry top design (Snorkel details page 32)
- Re-useable mesh bag

FIJI PVC JUNIOR MASK & SNORKEL SET



Mesh bag:
Blue Trans...DB4Bag-BT
Pink Trans...DB4Bag-PIT
Yellow Trans...DB4Bag-YT



- Mask "Fiji" w. PVC skirt (Mask details page 27)
- Snorkel "Goby" w. Semi-dry top design (Snorkel details page 32)
- Re-useable mesh bag

FIJI JUNIOR MASK & SNORKEL SET



Mesh bag:
Blue Trans...DB8Bag-BT
Pink Trans...DB8Bag-PIT
Yellow...DB8Bag-Y



Clamshell:
Blue Trans...DB8Clam-BT
Pink Trans...DB8Clam-PIT
Yellow...DB8Clam-Y

- Mask "Fiji" w. silicone skirt (Mask details page 27)
- Snorkel "Damsel" w. Semi-dry top design (Snorkel details page 32)
- Clamshell or re-useable mesh bag



CORAL "JUNIOR" MASK & SNORKEL SET



**Mesh Bag...DBCoralB
Clamshell...DBCoralC**

- Mask "Coral" w. Silicone skirt (Mask details page 28)
- Snorkel "Coral" w. Semi-dry top design (Snorkel details page 32)
- Re-useable mesh bag



SPEED 1 SNORKELLING FINS

DEEPBLUE

K B
PI Y



Black, S-M...DBF770-S/M-K
Black, ML-XL...DBF770-ML/XL-K
Blue, S-M...DBF770-S/M-B
Blue, ML-XL...DBF770-ML/XL-B
Pink, S-M...DBF770-S/M-Pi
Yellow, S-M...DBF770-S/M-Y
Yellow, ML-XL...DBF770-ML/XL-Y

- Travel-friendly short blade design
- Adjustable strap allows for wide foot range
- Soft & flexible blade
- Ergonomic foot pocket
- Non slip protection
- Ideal for snorkeling

SPEED 1 JUNIOR SNORKELLING FINS

DEEPBLUE

G
PI
Y



Green, S-M...DBFA22SM-G
Green, ML-XL...DBFA23MLXL-G
Pink, S-M...DBFA22SM-Pi
Pink, ML-XL...DBFA22SM-Pi
Yellow, S-M...DBFA22SM-Y
Yellow, ML-XL...DBFA23MLXL-Y

- Travel-friendly short blade design
- Adjustable strap allows for wide foot range
- Soft & flexible blade
- Ergonomic foot pocket
- Non slip protection
- Ideal for snorkeling

SPEED 2 FULL FOOT FINS

DEEPBLUE

K
B
Y



Black, XS...DBF367-XS-K
Black, S...DBF367-S-K
Black, M...DBF367-M-K
Black, L...DBF367-L-K
Black, XL...DBF367-XL-K

Blue, 5XS...DBF367-5XS-B
Blue, 4XS...DBF367-4XS-B
Blue, XS...DBF367-XS-B
Blue, S...DBF367-S-B
Blue, M...DBF367-M-B
Blue, L...DBF367-L-B
Blue, XL...DBF367-XL-B

Yellow, 5XS...DBF367-5XS-Y
Yellow, XS...DBF367-XS-Y
Yellow, M...DBF367-M-Y
Yellow, L...DBF367-L-Y
Yellow, XL...DBF367-XL-Y

- Soft & flexible blade
- Flexible centre section to channel water
- Ergonomic foot pocket
- Non slip protection
- Ideal for snorkeling

SPEED 3 ADJUSTABLE FINS

DEEPBLUE

Kids
BT
PI
Y



Adults
K
BT
O
Y

Adults:

Black, S-M...DBFB86SM-K
Black, L-XL...DBFB85LXL-K
Blue Trans, S-M...DBFB86SM-BT
Blue Trans, L-XL...DBFB85LXL-BT
Orange, S-M...DBFB86SM-O
Orange, L-XL...DBFB85LXL-O
Yellow, S-M...DBFB86SM-Y
Yellow, L-XL...DBFB85LXL-Y

Kids:

Blue Trans, S-M...DBFB87SM-BT
Blue Trans, M-L...DBFB88ML-BT
Blue Trans, L...DBFB89L-BT
Pink Trans, S-M...DBFB87SM-PIT
Pink Trans, M-L...DBFB88ML-PIT
Pink Trans, L...DBFB89L-PIT
Yellow, S-M...DBFB87SM-Y
Yellow, M-L...DBFB88ML-Y
Yellow, L...DBFB89L-Y

- Travel-friendly short blade design
- Adjustable strap allows for wide foot range
- Soft & flexible blade
- Ergonomic foot pocket
- Ideal for snorkeling
- Non slip protection

GO FINS OPEN HEEL

TOUGH AS NAILS,
DIVE SCHOOL FAVORITE



SCUBAPRO



Purple, Rental 3XS...X25.743.090/3XS
Green, Rental 2XS...X25.743.000/2XS
Blue, Rental XS-S...X25.743.150/XS-S
Yellow, Rental M-L...X25.743.300/M-L
Orange, Rental XL...X25.743.500/XL
Grey, Rental 2XL...X25.743.600/2XL

White, Travel XL...X25.741.500XL

Strap Colours:

Pu G B Y O Gy K

- The new phenomenon in fin rental; comfortable, practical durable & affordable
 - Monprene® TPE (Thermoplastic Elastomer)
 - Made from monprene using single mould construction-virtually indestructible
 - Bootless open heel configuration
 - Marine grade bungee, name plate, integral storage feature
 - Colour coded fin strap colours: Blue, Green, Grey, Orange, Purple, Yellow.
- Also available in all sizes with a black strap for retail

GO FINS RESORT SIZE CHART

SCUBAPRO



International Sizing				3XS	2XS	XS-S	M-L	XL	XXL
♂ US	♀	UK	EU						
10 KIDS		8	27	●	---	---	---	---	---
11 KIDS		10	28	●	---	---	---	---	---
12 KIDS		11	29	●	---	---	---	---	---
13 KIDS		12	30	●	○	---	---	---	---
1 KIDS		13	31-32	○	●	---	---	---	---
2 KIDS		1	33	---	●	---	---	---	---
3	4	2	34	---	●	---	---	---	---
4	5	3	35-36	---	●	○	---	---	---
5	6	4	37	---	○	●	---	---	---
6	7	5	38	---	---	●	---	---	---
7	8	6	39-40	---	---	●	○	---	---
8	9	7	41	---	---	○	●	---	---
9	10	8	42	---	---	---	●	---	---
10	11	9	43-44	---	---	---	●	○	---
11	12	10	45	---	---	---	○	●	---
12	13	11	46	---	---	---	---	●	○
13	14	12	47	---	---	---	---	●	●
14	15	13	48-49	---	---	---	---	○	●

SEAWING NOVA & GORILLA OPEN HEEL FINS

SCUBAPRO



W
K
Pi



Seawing Nova:

Black, XS...X25.731.100XS
Black, S...X25.731.200S
Black, M...X25.731.300M
Black, L...X25.731.400L
Black, XL...X25.731.500XL
White, XS...X25.732.100XS
White, S...X25.732.200S
White, M...X25.732.300M
White, L...X25.732.400L
White, XL...X25.732.500XL
Pink, XS...X25.735.100XS
Pink, S...X25.735.200S
Pink, M...X25.735.300M

- Award-winning design
- Fine-tuned to provide increase in stiffness & snap
- Ergonomic foot pocket with extended heel plate
- Wing tips arc upwards, increasing high-speed stability
- Better frog-kick-ability
- Marine quality bungee heel straps
- Ideal for Diving

GO SPORT FINS

SCUBAPRO



K W Pi

Regular Stock:

Black, XS...X25.761.100XS
Black, S...X25.761.200S
Black, M...X25.761.300M
Black, L...X25.761.400L
Black, XL...X25.761.500XL
White, XS...X25.762.100XS
White, S...X25.762.200S
White, M...X25.762.300M
White, L...X25.762.400L
White, XL...X25.762.500XL
Pink, XS...X25.766.100XS
Pink, S...X25.766.200S
Pink, M...X25.766.300M
Pink, L...X25.766.400L

SCUBALAB
TESTER'S
CHOICE
2019

Limited Stock Special Order:

Blue, XS...X25.764.100XS
Blue, S...X25.764.200S
Blue, M...X25.764.300M
Blue, L...X25.764.400L
Blue, XL...X25.764.500XL
Turquoise, XS...X25.765.100XS
Turquoise, S...X25.765.200S
Turquoise, M...X25.765.300M
Turquoise, L...X25.765.400L
Turquoise, XL...X25.765.500XL



Skegs:

Army Green...X25.328.000
Green...X25.328.010
Silver...X25.328.025
Purple...X25.328.050
Blue...X25.328.200
Turquoise...X25.328.250
Orange...X25.328.400
Yellow...X25.328.500
Pink...X25.328.700

- Lightweight design
- Open heel "boot-fit" design
- Self-adjusting bungee heel strap
- Ultra-strong 100% Monprene® construction
- In-water performance delivers speed, power, stability and maneuverability
- Fins fit easily in IATA carry-on compliant luggage.
- Skegs mounted on blade ends minimize sideslip and maximize stability.
- Fins are available in black, blue, yellow or white.

JET FINS CLASSIC OPEN HEEL

SCUBAPRO

VIRTUALLY INDESTRUCTIBLE
used by Navy Divers world-wide

REGULAR
STOCK

K



LIMITED STOCK SPECIAL ORDER



REGULAR STOCK:

Black, M...X25.365.300M
Black, L...X25.365.400L
Black, XL...X25.365.500XL
Black, XXL...X25.365.600XXL

LIMITED STOCK SPECIAL ORDER:

Camo Army Green/Black, M...X25.362.300M
Camo Army Green/Black, L...X25.362.400L
Camo Army Green/Black, XL...X25.362.500XL
Camo Army Green/Black, XXL...X25.362.600XXL
Red Camo, XL...X25.370.500XL
Camo White 4 color mix M...X25.397.300M

- Proven vented design decreases drag on the upstroke & enhances thrust on the downstroke
- Choice of combat & tactical units worldwide
- Water flows-thru vents on weaker downstroke
- Vents reduce pressure, providing less strain on the leg
- Angle of the vent acts as a solid blade on up-stroke
- Up-stroke provides maximum power & propulsion
- Ideal for Diving

PROPUTION S OPEN HEEL FINS

SEAC



W B K
Pi Y

S/M, M/L, L/XL - W...B71043
S/M - B, K, P, Y...B538
M/L - B, K, Y...B539
L/XL - B, K, Y...B540

- Large blade for a more powerful response in the water
- Flexible water channels for increased efficiency
- External ribbings for blade support
- Ergonomic open heel foot pocket w.non slip protection
- Ideal for Scuba Diving
- Propution with rubber strap
- Propution S with sling strap

F100 PRO FULL FOOT FINS

SEAC

CHOICE OF DIVE PRO'S

K B Pi
R Y

Black, 40/41...B9292-K
Black, 42/43...B9293-K
Black, 44/45...B9294-K
Black, 46/47...B9295-K
Blue, 36/37...B9290-B
Blue, 38/39...B9291-B
Blue, 40/41...B9292-B
Blue, 42/43...B9293-B
Blue, 44/45...B9294-B
Blue, 46/47...B9295-B
Pink, 36/37...B9290-P
Pink, 38/39...B9291-P
Red, 36/37...B9290-R
Red, 38/39...B9291-R
Red, 42/43...B9292-R
Red, 40/41...B9293-R
Yellow, 36/37...B9290-Y
Yellow, 38/39...B9291-Y
Yellow, 40/41...B9292-Y
Yellow, 42/43...B9293-Y
Yellow, 44/45...B9294-Y
Yellow, 46/47...B9295-Y



- Researched & created for heavy duty intensive use
- Large blade for a more powerful response in the water
- Flexible water channels for increased efficiency
- Extra solid external ribbings
- Ergonomic foot pocket w. non slip protection
- Ideal for Dive Centres

JET FINS PRO OPEN HEEL FINS

AQUATEC



Jet Fin Pro, Spring Strap, L-P...SJFPRO2/L-P
Jet Fin Pro, Spring Strap, XL-K...SJFPRO3/XL-K
Jet Fin Pro, Spring Strap, XL-Y...SJFPRO3/XL-Y

- Material: 100% Rubber
- Proven Vented Design (Excellent propulsion)
- Provides Exceptional Speed with Minimal Effort
- Vents Reduce Pressure, Providing less strain on leg
- Angle of the vent reacts as a solid blade on upstroke
- Slightly positive buoyant in saltwater, neutrally fin in fresh water
- Preferred fin type by Scuba Instructors & Diving Professionals
- Open heel with heavy duty dual bungee cord straps
- Colours: Black, Green, Pink, Yellow
- Sizes: M, L, XL

TATTOO FREEDIVING FINS



NEW

Black, XXS...S2950-K/2XS
Black, XS...S2950-K/XS
Black, S...S2950-K/S
Black, M...S2950-K/M
Black, L...S2950-K/L
White, XXS...S2950-W/2XS
White, XS...S2950-W/XS
White, S...S2950-W/S
White, M...S2950-W/M
White, L...S2950-W/L

- Soft, comfortable and reactive fins.
- Engraved tattoo style graphics on blade's centre.
- Super lightweight positively buoyant design.
- A high-quality flexible blade with grooves and rails for efficiency of kick...
- Super light-weight design reduces leg fatigue but maximises power transmission.
- Made of ultra-comfortable TPR and PP composite materials.
- Includes a non-woven shoulder bag
- Colours: Carbon Black or Diamond White

JET FINS OPEN HEEL FINS



Black, XL...S2030
Black, L...S2031
Black, M...S2032

- Durable rubber construction
- Drag-reducing vents
- Soft foot pocket
- Semi rigid side rails for blade stability
- Adjustable rubber heel straps
- Ideal for Diving



SCUBAPRO BOOTS

SCUBAPRO

High Boots:

3XS/4...X57138/3XS
2XS/5...X57138/2XS
XS/6...X57138/XS
S/7...X57138/S
M/8...X57138/M
L/9...X57138/L
XL/10...X57138/XL
2XL/11...X57138/2XL
3XL/12...X57138/3XL



Short Boots:

3XS/4...X57166/3XS
2XS/5...X57166/2XS
XS/6...X57166/XS
S/7...X57166/S
M/8...X57166/M
L/9...X57166/L
XL/10...X57166/XL
2XL/11...X57166/2XL



- Delta boot, 5mm comfort & protection, available in 3XS-3XL
- Delta short boot, 3mm low-cut & light weight, available in 3XS-2XL

BOOT SIZE CHART

Size	Deep Blue	Scubapro	Seac
3XS	4	5	n/a
2XS	5	5.5	23/36-37
XS	6	6	24/37-38
S	7	7	25/38-39
SM	n/a	n/a	n/a
M	8	8	26/40-41
ML	9	8.5	n/a
L	10	9	27/42-43
XL	11	10	28/43-44
2XL	12	11	29/45-46
3XL	n/a	11.5	n/a

DEEP BLUE SOCKS

DEEPBLUE

2XS...DBB03-XXS
XS...DBB03-XS
S...DBB03-S
M...DBB03-M
L...DBB03-L
XL...DBB03-XL
2XL...DBB03-XXL



- Neoprene sock, 2mm Size XXS - XXL

SEAC BOOTS

SEAC

High Boots:

2XS...B67900-XXS
XS...B67900-XS
S...B67900-S
M...B67900-M
L...B67900-L
XL...B67900-XL
2XL...B67900-XXL



- Basic HD boots, 5mm available in 2XS-2XL

DEEP BLUE BOOTS

DEEPBLUE

Classic Boots:

2XS...DBB01B-XXS
XS...DBB01B-XS
S...DBB01B-S
M...DBB01B-M
ML...DBB01B-ML
L...DBB01B-L
XL...DBB01B-XL
2XL...DBB01B-XXL



Nautilus Boots:

2XS...DBB01C-XXS
XS...DBB01C-XS
S...DBB01C-S
M...DBB01C-M
ML...DBB01C-ML
L...DBB01C-L
XL...DBB01C-XL



Reef Half Boots:

3XS...DBB02A-XXXS
2XS...DBB02A-XXS
XS...DBB02A-XS
S...DBB02A-S
M...DBB02A-M
ML...DBB02A-ML
L...DBB02A-L
XL...DBB02A-XL
2XL...DBB02A-XXL



- Nautilus boots, 5mm available in 2XS-XL
- High boots w. orange insert, 5mm available in 2XS-2XL
- Half boots w. pull cord, 3mm available in 3XS-2XL

BEACH WALKER

DEEPBLUE

Aloha - Orange:

30...DBB04-30
31...DBB04-31
32...DBB04-32
33...DBB04-33
- etc.
- -
44...DBB04-44
45...DBB04-45
46...DBB04-46



Aloha - Blue:

30...DBB05-30
31...DBB05-31
32...DBB05-32
- etc.
- -
44...DBB05-44
45...DBB05-45
46...DBB05-46



Aloha - Blue Trim:

35...DBB06-35
36...DBB06-36
37...DBB06-37
38...DBB06-38
- etc.
- -
44...DBB06-44
45...DBB06-45



- Available in 30, 31, 32, 33, 34, 35, 36, 37, 38, 39, 40, 41, 42, 43, 44, 45, 46

SCUBAPRO GLOVES 1.5mm

SCUBAPRO

Tropic Gloves, Flamingo

2XS...X580340/XXS
XS...X580341/XS
S...X580342/S
M...X580343/M



Tropic Gloves, Aegean

2XS...X580320/XXS
XS...X580321/XS
S...X580322/S
M...X580323/M
L...X580324/L



Tropic Gloves, Black

S...X580352/S
M...X580353/M
L...X580354/L
XL...X580355/XL



Tropic Gloves

XL...X58325/XL
2XL...X58325/XXL



Tropic Gloves, Black

2XS...X58326/XXS
XS...X58326/XS
XL...X58326/XL
2XL...X58326/XXL



Seamless Gloves

XS...X580001/XS
S...X580002/S
M...X580003/M
L...X580004/L
XL...X580005/XL



SEAC GLOVES

SEAC

High Boots:

XS...B64600-XS



- Tropic HD glove, 1.5mm Size XS

DEEP BLUE GLOVES

DEEPBLUE

XS...DBG01-XS
S...DBG01-S
M...DBG01-M
L...DBG01-L
XL...DBG01-XL



- Tropic glove, 1.5mm Size XS - XL

SPORTFLEX



PRO:

2XS...DBADS01-XXS
XS...DBADS01-XS
S...DBADS01-S
M...DBADS01-M
L...DBADS01-L
XL...DBADS01-XL
2XL...DBADS01-XXL
3XL...DBADS01-XXXL

- Add your own logo on chest
- 3mm shorty / Black
- Quality CR neoprene (CR = Chloroprene Rubber)
- Back zipper, YKK
- Rolled seams on edges
- Flat comfortable seams
- Sizes: XXS-XXXL
- Size indication on zipper band

XS...DBADS02-XS
S...DBADS02-S
M...DBADS02-M
L...DBADS02-L
XL...DBADS02-XL
2XL...DBADS02-XXL

- Add your own logo on chest
- 3mm shorty / black w. blue panels
- Standard neoprene
- Back zipper, YKK
- Rolled seams on edges
- Flat comfortable seams
- Sizes: XS-XXL
- Size indication on zipper band

2XS...DBADS04-XXS
XS...DBADS04-XS
S...DBADS04-S
M...DBADS04-M
L...DBADS04-L
XL...DBADS04-XL
2XL...DBADS04-XXL
3XL...DBADS04-XXXL

- Add your own logo on chest
- 3mm shorty / black w. blue stitching
- Standard neoprene
- Back zipper, YKK
- Rolled seams on edges
- Flat comfortable seams
- Sizes: 3XS-3XL
- Size indication on zipper band

SPORTFLEX PRO 3mm



XS...DBADS03-XS
S...DBADS03-S
M...DBADS03-M
L...DBADS03-L
XL...DBADS03-XL
2XL...DBADS03-XXL
3XL...DBADS03-XXXL

- 3mm durable black neoprene
- Back zipper
- Rolled seams on edges
- Flat comfortable seams
- Sizes: XS-XXXL
- Size indication on zipper band
- Wrist & ankle zipper

STEAMER SIZE CHART

Position	XS	S	M	L	XL	XXL	3XL
Chest	84	88	92	96	100	104	108
Waist width	69	73	77	81	85	89	93
Hip width	84	88	92	96	100	104	108
Length of neck to crotch	68	70	72	74	76	78	80
Neck circumference	35	36	37	38	39	40	41

WETSUIT SIZE CHART

DEEP BLUE SHORTY DBADS01 / DBADS02 / DBADS04



Unit: cm

Position	XXS	XS	S	M	L	XL	XXL	XXXL
Chest	79	83	87	91	95	99	103	107
Waist width	65	69	73	77	81	85	89	93
Hip width	80	84	88	92	96	100	104	108
Length of neck to crotch	65	67	69	71	73	75	77	79
Neck circumference	33	34	35	36	37	38	39	40

ICON RASHGUARD



Black, M...DBLR2K-M
Black, L...DBLR2K-L
Black, XL...DBLR2K-XL
Black, 2XL...DBLR2K-XXL

Black, 2XS...DBLR1K-XXS
Black, XS...DBLR1K-XS
Black, S...DBLR1K-S
Black, M...DBLR1K-M
Black, L...DBLR1K-L
Black, XL...DBLR1K-XL
Black, 2XL...DBLR1K-XXL

Black/Blue, 2XS...DBLR1KB-XXS
Black/Blue, XS...DBLR1KB-XS
Black/Blue, S...DBLR1KB-S
Black/Blue, M...DBLR1KB-M
Black/Blue, L...DBLR1KB-L
Black/Blue, XL...DBLR1KB-XL
Black/Blue, 2XL...DBLR1KB-XXL

Black/Grey, 2XS...DBLR1KGy-XXS
Black/Grey, XS...DBLR1KGy-XS
Black/Grey, S...DBLR1KGy-S
Black/Grey, M...DBLR1KGy-M
Black/Grey, L...DBLR1KGy-L
Black/Grey, XL...DBLR1KGy-XL
Black/Grey, 2XL...DBLR1KGy-XXL

- The optimal body wear for water sports or any outdoor activities
- Light weight & instant drying
- Tie down loop for surfers
- Colours: Black, Black/Blue, Black/Grey & Black with Blue screen

ICON LOOSE FIT RASH GUARD



2XS...DBLR1F-XXS
XS...DBLR1F-XS
S...DBLR1F-S
M...DBLR1F-M
L...DBLR1F-L
XL...DBLR1F-XL

- The optimal body wear for water sports or any outdoor activities
- Light weight & instant drying
- Unisex design
- Tie down loop for surfers
- UPF-50 (Ultraviolet Protection Factor)
- Material: 82% Nylon, 18% Spandex

EVERFLEX STEAMER

3/2mm & 3mm



Men, XS...X63353/XS

Lady, XXS...X63354/XXS

Lady, L...X63354/L

- X-Foam eco-friendly neoprene & solvent free glue for better health & environmental protection
- Smooth-cut neckline
- New PVC zip ends adds stylish & durable finishing
- Glideskin seals
- New heliospan torso lining for added protection & insulation
- 3D design shoulder pads & Tatex kneepads
- Powertex anti-abrasion
- 2x I-Safe straps
- Compression lumbar & spine pad

THERMAL TEC STEAMER

5mm



Lady, 5mm, XL...X64464XL

A serious suit for serious divers. The Thermal TEC is a perfect combination of advanced materials & thoughtful construction, creating a suit of outstanding durability, comfort & insulation. Main suit sections are made of durable & fast drying N2S neoprene. Wrist & ankle zippers for divers ease of wear.

PROFILE

0.5mm



Lady, 2XS...X63447/XXS

Men, S...X630372/S

Men, M...X630373/M

Men, L...X630374/L

Men, XL...X630375/XL

- 0.5mm nylon neoprene outside for durability & Silverskin inside for easy wear. Silverskin is an ultra-smooth interior finish. It consists of a cell finish with 'metalite' coating for extra warmth retention. It dries fast & seals extremely well. It is also used on hood & glove interiors
- Non-chaffing flat seams for insured comfort directly against your skin. Flat seam construction is a stitching pattern that provides comfort, strength & flexibility on warm water suits
- Thumb & foot straps, for added convenience
- Back zipper for great ergonomics
- Men's & women's dedicated sizes & colours

DEFINITION

3mm



Men, S...X639302/S

Men, M...X639303/M

Men, L...X639304/L

Men, XL...X639305/XL

Men, 2XL...X639306/XXL

Lady, 2XS...X639310/XXS

Lady, XS...X639311/XS

Lady, S...X639312/S

Lady, M...X639313/M

Lady, L...X639314/L

- Made from X-Foam neoprene, the only "green" neoprene that complies with P.A.H. regulations
- The "body map" system uses special tailoring & material inserts to compensate for the stresses of the human body
- Ultraspan chest panel & Stretchtec side panels work together to produce a highly flexible & snug fit
- Infrared (IR) fleece interior lining reflects body heat for extra thermal insulation & is extremely soft against the skin
- Zippered seals at wrists & ankles plus a rear diagonal zipper block water entry, are comfortable & make the suit easy to put on & take off
- Abrasion resistant fabric on shoulders & seat, along with elbow pads & kneepads, increase long-term durability
- Spine pad cushions the tank, providing a ditional comfort during extended dives
- Small neck zipper enhances topside comfort, eliminating the need to remove the suit between dives
- I-Safe strap keeps a wrist instrument securely attached

EVERFLEX STEAMER

3/2mm



NEW



Men, S...X634822/S

Men, M...X634823/M

Men, L...X634824/L

Men, XL...X634825/XL

Men, 2XL...X634826/XXL

Lady, 2XS...X634810/XXS

Lady, XS...X634811/XS

Lady, S...X634812/S

Lady, M...X634813/M

- Made with 100% Everflex neoprene and are assembled using solvent-free water-based Aqua glue.
- Multi-thickness panels deliver a superior combination of warmth and flexibility.
- The Innovative Pure Design Concept uses fewer seams and panels for maximum range of motion.
- Double blind-stitched outer seams, and single blind-stitched inner seams are durable, watertight and comfortable against the skin.
- The Diamond Span inner lining's water-draining material enhances cold water protection and improved stretch.
- Wrists and ankles feature fuse-cut finished cuffs that are super-stretchy.
- A small neck zipper enhances topside comfort.
- Diagonal rear YKK zipper with brass slider offers increased long-term durability and ease of use.
- Compression-molded zipper flap/spine pad reduces water entry and increases back protection.
- Tatex knee and shoulder pads offer protection against abrasion.
- Seat area is protected by an abrasion-resistant outside lining to increase durability and extend the life of the suit.

HYBRID SHORT w. CARGO POCKETS

SCUBAPRO

S...X653512S
L...X653514L



Unique styling keeps you warm, comfortable & looking good. Worn alone or over a dive suit, their added pockets are a diver's favorite.

HYBRID SHORTS w. CARGO POCKETS & Belt

SCUBAPRO

S...X653532S
M...X653533M
L...X653534L
XL...X653535XL
2XL...X653536XXL



- New adjustable easy to use waist belt
- Abrasion resistant fabric on the seat
- Comfortable 1 mm X-Foam neoprene and nylon material
- Two large cargo pockets

HOODED VEST

SCUBAPRO

2XS...X64062XXS
XS...X64062XS
S...X64062S
M...X64062M
ML...X64062ML
L...X64062L
XL...X64062XL
2XL...X64062XXL
3XL...X64062XXXL



- 2.5mm throughout
- 100% Everflex neoprene
- Light graphic print on side panels & head
- Glide skin interior (black)

HOOD EVERFLEX 5/3mm

SCUBAPRO

S...X67.052.200S
M...X67.052.300M



- Constructed of high-stretch 100 percent Everflex neoprene for maximum comfort & durability
- Extremely stretchy Silverskin lining feels good against the skin & provides a good seal to minimize water transfer

XS-S...X67.115.100
S-M...X67.115.200
M-L...X67.115.300
L-XL...X67.115.400
XL-2XL...X67.115.500



- NEW design and pattern improves fit and comfort for warm-water dives.
- Made with 5/3mm X-Foam neoprene.
- 100% high-stretch Everflex Nylon outside and NEW interior.
- Assembled using solvent-free glue, a 100% green process.

T-FLEX LONG SLEEVE

SCUBAPRO



Lady, Blue/White
XS...X63280/XS



Men, Black
XS...X63283/XS

- Scubapro-designed T-Flex Rash Guard / Lycra shirt
- High quality, UV-rated FlexTec shirts with close-to-body fit to wear under a suit for added warmth, or used solely as a rashguard for your snorkeling & swimming activities
- Extremely flexible & stretchy, making it super comfortable to wear
- Available with long sleeves & in various colour combinations with two-colour style accents & contrasting outside stitching

MICROFIBER TOWEL

SCUBAPRO



X50.582.000
• Large 160x80cm, Blue

EVERFLEX HOODED VEST w. FRONT ZIP



SCUBAPRO

SCUBAPRO's 3mm Everflex hooded vest with front zipper is ideal for offering that extra thermal protection when diving in the tropics or offering an additional layer of thermal protection needed for a long day of multiple dives.

- 100% Everflex 3 mm neoprene
- Blue Diamond Span inner lining with water draining material.
- Full length YKK Zipper
- Thermal protection for the torso and head

Men
M...X700183/M
L...X700184/L
XL...X700185/XL
XXL...X700186/XXL

Women
S...X700192/S
M...X700193/M
L...X700194/L



T-FLEX UPF 80 LONG SLEEVE

SCUBAPRO



Men, Black
S...X652312/S
M...X652313/M
L...X652314/L
XL...X652315/XL
2XL...X652316/XXL



Men, Graphite
S...X652322/S
M...X652323/M
L...X652324/L
XL...X652325/XL
2XL...X652326/XXL



Lady, Onyx
XS...X657361/XS
S...X657362/S
M...X657363/M
L...X657364/L
XL...X657365/XL

- Look sharp while enjoying outstanding protection with the stylish T-FLEX rashie. Made from water-repellant Flex-Tec, the T-FLEX doesn't trap water & it dries quickly
- The thumb-hole wrist design on the long sleeve models makes it easy to wear beneath a wetsuit. When topside, its UPF80 (Ultraviolet Protection Factor) rating provides ample protection from the sun's rays

RASHGUARD LONG SLEEVE UPF 50

SCUBAPRO



Men, Aegean
S...X650332/S
M...X650333/M
L...X650334/L
XL...X650335/XL
2XL...X650336/XXL



Men, Black
S...X650312/S
M...X650313/M
L...X650314/L
XL...X650315/XL
2XL...X650316/XXL



Men, Graphite
S...X650322/S
M...X650323/M
L...X650324/L
XL...X650325/XL
2XL...X650326/XXL



- UPF 50 rating (blocks 98% of UV radiation)
- High quality polyester: durable, abrasion-resistant, good color fastness
- Form-fitting design wears easily under a wetsuit & retains its shape after repeated use
- Flattering color panels & high neck line to prevent uncomfortable chafing
- Material dries quickly to enhance comfort between dives

T-FLEX LONG SLEEVE



Black/Blue
XS...X63180/XS
M...X63180/M

- Scubapro-designed T-Flex Rash Guard / Lycra shirt
- High quality, UV-rated FlexTec shirts with close-to-body fit to wear under a suit for added warmth, or used solely as a rashguard for your snorkeling & swimming activities
- Extremely flexible & stretchy, making it super comfortable to wear
- Available with long sleeves & in various colour combinations with two-colour style accents & contrasting outside stitching

SWIM UPF 50 LONG SLEEVE



S...X620312/S
M...X620313/M
L...X620314/L
XL...X620315/XL
2XL...X620316/XXL

- Stylish polyester skin protection; increases comfort when diving & on the surface
- UPF 50 rating blocks 98% of UV radiation
- Features a chlorine-resistant treatment for pool training
- High quality polyester offers good color fastness
- Durable, abrasion-resistant, retains its shape after repeated use & wears easily under a wetsuit
- Highly versatile – ideal for divers, snorkelers, paddleboarders, swimmers & other water enthusiasts too

T-FLEX UPF 80 LONG SLEEVE



Lady, Caribbean T Flex
XS...X657351/XS

- UPF 80 rating (awarded by UV standard 801)
- Made from a blend of 86% super-soft nylon & 14% highstretch spandex
- The nylon is lightweight & quick drying
- The spandex provides more fabric stretch & allows for comfort & form-fitting styling
- Exceptional strength, abrasion resistance moisture control
- Form-fitting for that sleek hydrodynamic look & feel
- Slimming color panels & cut compliment the female body

LOVE T-SHIRT



Size 2XS, Blue...X003.34-2XS
Size XS, Blue...X003.36-XS
SSize S, Blue...X003.38-S
Size M, Blue...X003.40-M
Size L, Blue...X003.42-L
Size XL, Blue...X003.44-XL
Size 2XL, Blue...X003.46-2XL
Size 3XL, Blue...X003.48-3XL
Size 2XS, Pink...X004.34-2XS
Size XS, Pink...X004.36-XS
SSize S, Pink...X004.38-S
Size M, Pink...X004.40-M
Size L, Pink...X004.42-L
Size XL, Pink...X004.44-XL

- 100% Cotton, 150 GSM
- Scubapro logo on front
- "LOVE" on back
- Available in Blue and Pink screen

SCUBAPRO T-SHIRT



2XS...X002.34-2XS
XS...X002.36-XS
S...X002.38-S
M...X002.40-M
L...X002.42-L
XL...X002.44-XL
2XL...X002.46-2XL
3XL...X002.48-3XL
4XL...X002.50-4XL

- 100% Cotton, 150 GSM
- "Deep Down You Want The Best" on front
- Scubapro logo on back

CAMO RASH GUARD



size S only
X63660

- Ultra UV protection rating SPF80
- Breathable high-tech hollow fiber
- Extremely water resistant, quick-drying

T-FLEX UPF 80 LEGGINGS



Lady, Caribbean
XS...X657751/XS
S...X657752/S



Lady, Jewel
XS... 1/XS

- Rated UPF 80 by UV Standard 801 - the highest UV protection rating available in the industry
- Made from a blend of 86% super-soft nylon & 14% high-stretch spandex
- Maximum comfort - maximum stretch
- Looks great with the T-Flex rash guards
- Slimming color panels & cut compliment a female's body
- Highly versatile - ideal for divers, snorkelers, swimmers & other water enthusiasts

TG-6 STYLUS TOUGH CAMERA

OLYMPUS



- 12MP - 1/2.3 BSI-CMOS sensor
- ISO 100 - 12800
- 25-100 mm F2.0-4.9 zoom lens
- Sensor-shift image stabilization
- 3 Fixed type screen
- 20.0 fps continuous shooting
- 4K - 3840 x 2160 video resolution
- Built-in wireless
- Built-in GPS
- 253g 113 x 66 x 32mm
- Weather sealed body

K R
Black...OL-TG6-K
Red...OL-TG6-R

HOUSING UNDERWATER

OLYMPUS



OL-PT059

- For TG-6 digital camera
- Depth rating: 45m
- Retains access to all camera controls
- Can accommodate 2 external flashes
- Supports optional lens accessories
- Dimensions: 6.2 x 4.8 x 3.2" / 157 x 122 x 81mm
- Weight: 1.1 lb / 484g

TG-6 STYLUS TOUGH CAMERA SET

OLYMPUS

Black...OL-TG6Set-K
Red...OL-TG6Set-R



- TG-6 digital camera
- Underwater housing

K R

M2500 WSRBA SMART FOCUS VIDEO LIGHT

OLYMPUS



OL-M2500

- Emission angle: 100°
- Color temperature: 5500K
- Total luminous flux/burn time: Wide light: 2500lm (3 levels of brightness) @60min (SupportAuto Shut-off) Red light: 200lm (3 levels of brightness) @250min. (SupportAuto Shut-off)
- Blue Light: 6W @120min
- Battery level indication
- Control methods: 2 x push buttons
- Power supply: Rechargeable Li-ion battery, 3.7V 5000mAh
- Depth rated: 100m, IPX8 (JIS protection class 8)
- 1 x Li-ion battery, 1 x USB charger, 1 x YS adapter, 2 x spare o-rings

UFL-3 UNDERWATER STROBE

OLYMPUS



OL-UFL3

- Depth rating: 246' / 75m
- Guide number: 22 m / 72' at ISO 100 when used above water at full power
- Effective flash range: not specified by manufacturer
- Angle of coverage: above water: equivalent to that of a 24mm lens (35 mm format)
- Color temperature: 5400K
- Connectivity: PTCB-E02 fiberoptic cable (not included)
- Flash Modes: TTL, Slave & Manual: 10 steps
- Mounting: YS mount (bolt included)
- Recycle time: approx. 2.0 sec
- Power source: 4 AA alkaline, NiMH, lithium, or oxy nickel hydroxide (Oxyride) batteries (not included)
- Dimensions: 2.7 x 4.3 x 5.2" / 6.9 x 10.9 x 13.2cm
- Weight: 1.0lb / 0.45kg

OLYMPUS



ACCESSORIES FOR OLYMPUS CAMERA



- Double Ball Arm 12"...OL-L12
- Double Ball Arm 9"...OL-L09
- Double Ball Arm 6"...OL-L06
- Macro Lens Set, stackable, for SeaTouch PRO...OL-MACRO
- Wide Angle Lens Set, 105 degree, for SeaTouch PRO...OL-WIDE
- SeaLense™ High End Red Filter for ST2...OL-RED-HI
- SeaLense™ Filter Red for ST2...OL-RED-STD
- O-ring TG5/TG6...OL-POL058
- Lithium-Ion Battery Charger for LI-92B (Fast: 5 Hrs)...OL-UC92
- Aluminium Clamp (Black)...OL-CL01
- Quick Release System for AC1 UWL-400a...OL-QRS
- SeaCharge™ Wireless Charging - Water Repellent...OL-CHARGER
- Shoe Base Ball...OL-Shoe
- Fibre Optic Cable II/M (Length 453mm/17.8 inch)...OL-5012B
- Adapter for ST PRO 37cm...OL-ADAP37
- Handle Tray Set...OL-TR03
- Fiber Optic Cable Adap. for TG...OL-FCA01
- Spare Battery...OL-L192B

ACCESSORIES FOR CAMERA



- Chest Strap...MSSP1-CS
- Intova Pod...MSSP1-INTPOD
- Helmet Mount...MSSP1-HELM
- Bar / Pole Mount...MSSP1-HBM
- Camera Hand Strap...MSSP1-CHS
- Tripod Mount Adapter...MSSTMA
- Floating Multi Grip...MSSFMG01
- Camera Care Kit...MSSCCK
- Extension Pole...MSSP1EXT

ACCESSORIES FOR CAMERA



- 300mm double ball arm...ONAU.72205
- 200mm double ball arm...ONAU.72204
- Long strobe mounting ball for cold shoe...ONAU.25321
- Strobe mounting ball for cold shoe...ONAU.25311
- 50mm single ball arm...ONAU.72301
- Strobe mounting ball for Easitray & Flexitray...ONAU.71311
- Long standard clamp...ONAU.72503
- Standard clamp...ONAU.72501
- Triple Clamp...ONAU.72505
- Long light mounting stem for cold shoe...ONAU.25322
- Nauticam lubricant (Christo Lube)...ONAU.25016
- Light mounting stem for cold shoe...ONAU.25312
- 18cm lanyard with 2 snap hooks...ONAU.25411
- 23cm lanyard with 2 snap hooks...ONAU.25412
- Adjustable right handle II (for Easitray II & Flexitray II)...ONAU.71208
- Easitray II with left handle (with 2pcs 1/4" screws)...ONAU.71206
- Flexitray II with left handle (with 2pcs 1/4" screws)...ONAU.71207

GEAR BAG



B K R

Blue...DB8020-B
Black...DB8020-K
Red...DB8020-R

- Add your custom logo
- Oversize gearbag, 70 x 35 x 35cm (~ 90L)
- Colours: Black, Blue & Red

GEAR BAG



B K R

Blue...DB8010-B
Black...DB8010-K
Red...DB8010-R

- Add your custom logo
- Large gearbag, 70 x 30 x 30cm (~ 65L)
- Colours: Black, Blue & Red

MESH GEAR BAG



- Nylon mesh gear bag
- Lightweight & tough
- Length 63cm

DBBL3176

REGULATOR BAG



DB8001

- Designed for optimum protection of your regulator
- 8.5L capacity size 32 x 32 x 10cm

SNORKELING BAG



Blue...DB8040-B
Black...DB8040-K

- Lightweight & convenient for mask, snorkel & fins 75 x 25cm
- Colours: Black & Blue

MESH BAG



Blue 48x20cm...DB8065-B
Yellow 48x20cm...DB8065-Y
Blue 70x30cm...DB8066-B

- DB8065: fits mask & snorkel 48 x 20cm with shoulder strap, colours: Blue & Yellow
- DB8066: fits mask, snorkel & fins 70 x 30cm with shoulder strap, colour: Blue

B Y



WATERPROOF POUCH



B K

Blue...DB8044-B
Black...DB8044-K
Custom Logo...DB8044-C

- Perfect to store your documents & course materials
- Add your custom logo
- Size: 38 x 30cm

ADVENTURE BACK PACK

Blue...DBBACK1-B
Sky Blue...DBBACK1-BL
Citrus...DBBACK1-Ci
Black...DBBACK1-K
Yellow...DBBACK1-Y

B BL Ci K Y

- Super heavy duty waterproof fabric
- 100% waterproof RF-welded seams
- Additional outside pocket w. waterproof zipper
- Folding locking system
- Comfortable shoulder straps
- Sternum strap
- Air-Net padded backpack
- Protects contents from water, sand, dust & dirt
- Not suitable for full submersion



ADVENTURE DRY PACK

For Custom Print



- Super heavy duty waterproof fabric
- 100% waterproof RF-welded seams
- Perfect for all outdoor activities
- Folding locking system
- Shoulder strap included
- Protects contents from water, sand, dust & dirt
- Not suitable for full submersion



	5L	10L	15L
Blue	DBBV05-B	DBBV10-B	DBBV15-B
Black	DBBV05-K	DBBV10-K	DBBV15-K
Red	DBBV05-R	DBBV10-R	DBBV15-R
Yellow	DBBV05-Y	DBBV10-Y	DBBV15-Y
Sky Blue	DBBV05-BL	DBBV10-BL	DBBV15-BL
Citrus	DBBV05-Ci	DBBV10-Ci	DBBV15-Ci
Orange	DBBV05-O	DBBV10-O	DBBV15-O
Pink	DBBV05-Pi	DBBV10-Pi	DBBV15-Pi
Purple	DBBV05-Pu	DBBV10-Pu	-

	1.5L	3L	5L	10L	15L	20L	30L	40L
Blue	DBBA02-B	DBBA03-B	DBBA05-B	DBBA10-B	DBBA15-B	DBBA20-B	DBBA30-B	DBBA40-B
Black	DBBA02-K	DBBA03-K	DBBA05-K	DBBA10-K	DBBA15-K	DBBA20-K	DBBA30-K	DBBA40-K
Red	DBBA02-R	DBBA03-R	DBBA05-R	DBBA10-R	DBBA15-R	DBBA20-R	DBBA30-R	DBBA40-R
Yellow	DBBA02-Y	DBBA03-Y	DBBA05-Y	DBBA10-Y	DBBA15-Y	DBBA20-Y	DBBA30-Y	DBBA40-Y
Sky Blue	DBBA02-BL	DBBA03-BL	DBBA05-BL	DBBA10-BL	DBBA15-BL	-	-	-
Citrus	DBBA02-Ci	DBBA03-Ci	DBBA05-Ci	DBBA10-Ci	DBBA15-Ci	-	-	-
Orange	DBBA02-O	DBBA03-O	DBBA05-O	DBBA10-O	DBBA15-O	-	-	-
Pink	DBBA02-Pi	DBBA03-Pi	DBBA05-Pi	DBBA10-Pi	DBBA15-Pi	-	-	-
Purple	DBBA02-Pu	DBBA03-Pu	DBBA05-Pu	DBBA10-Pu	-	-	-	-

WATERPROOF POUCH



DBBA01-O



- Perfect for all outdoor activities
- Waterproof ultra light 210T polyester w. clear window
- Durable, wipe clean & easy to store away
- Folding locking system
- Shoulder strap included
- Protects contents from water, sand, dust & dirt
- Not suitable for full submersion

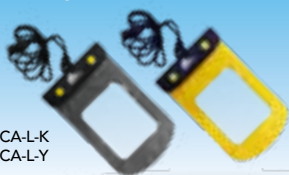
ADVENTURE BACK PACK



- PHUKET
- KRABI
- KOH LIPE

	Krabi		Lipe		Phuket	
	5L	10L	5L	10L	5L	10L
Sky Blue	DBBC05Kr-BL	DBBC10Kr-BL	DBBC05Li-BL	DBBC10Li-BL	DBBC05Ph-BL	-
Citrus	DBBC05Kr-Ci	DBBC10Kr-Ci	DBBC05Li-Ci	DBBC10Li-Ci	DBBC05Ph-Ci	DBBC10Ph-Ci
Orange	DBBC05Kr-O	DBBC10Kr-O	DBBC05Li-O	DBBC10Li-O	DBBC05Ph-O	DBBC10Ph-O
Yellow	DBBC05Kr-Y	DBBC10Kr-Y	DBBC05Li-Y	DBBC10Li-Y	DBBC05Ph-Y	DBBC10Ph-Y

WATERPROOF BAG FOR CAMERA / PHONE



Black...DBNCA-L-K
Yellow...DBNCA-L-Y

- 100% waterproof bag
- Fits most pocket size cameras
- Vision panel to allow clear photographs or video
- Protects contents from water, sand, dust & dirt
- Adjustable nylon lanyard included
- Protected against water submersion (IPX-8)
- Sizes: Large

WATERPROOF EARPHONES



w/o Microphone...DBNEARP2

w. Microphone...DBNEARP

- The 3.5mm stereo jack provides compatibility with most smart phones & music players
- 100% waterproof to 3m (10ft)
- On/Off switch for clarity when using a telephone
- Excellent sound quality in & out of water

REGULATOR BAG W. INSTRUMENT BAG



X53.309.000

- Constructed from a combination of 420D Nylon NT & 450D Rip-stop
- The interior lining is 150D Polyester
- Internal Velcro straps secure a coiled regulator or console with hoses
- Double slider zipper
- Padded handle & shoulder strap
- Transparent zippered pouch inside
- Regulator Bag dimensions: 35 x 26 x 10cm, Weight: 0.35kg
- Instrument Bag dimensions: 11.5 x 7 x 15cm, Weight: 0.1kg

TRAVEL REGULATOR VINTAGE BAG



X53.309.100



- Constructed of 500D water-resistant tarpaulin with a lined interior to hold all the essentials
- Dimensions: 32 x 32 x 10cm, Weight: 0.8kg

CARRY-ON FOLDABLE BAG



X53.338.190

- 120D Nylon
- 600D Polyester Straps
- Designed to fit/slide on top cabin bag handle
- Great reusable shopping bag too

PORTER BAG MEDIUM



FOLDED

X53.310.190

- Bag's exterior is made from a combination of 420D Nylon NT and 450D Rip-stop fabric for strength and durability. The interior lining is 150D Polyester fabric.
- Offering lots of gear carrying capacity, the bag folds into a compact package for storage.
- Large main compartment, two front pockets and two inside pockets provide a variety of packing and stowage options.
- YKK Vislon saltwater-resistant double-slider zipper is durable and makes accessing the large main compartment that much easier.
- Backpack system plus top handle with reinforced "off-road" skate-style wheels provide multiple transport options.
- Adjustable top handle makes rolling easy and convenient.
- Dimensions (approximate): 32x18x14in / 80x45x35cm. Weight: 5.51lbs/2.5kg. Volume: 33.0gal/125L.
- Folded dimensions (approximate): 20.4x16.1x6.7in / 52x41x17cm.

DIVE'N ROLL BAG LITE



REMOVABLE BACKPACK INCLUDED



X53.360.170



- Two in one concept, rigid case + detachable backpack
- Exterior material combination of 420D Nylon NT, 450D Ripstop & 600D Polyester/PU
- Inside lining 150D Polyester/PU
- Coil double slider zippers
- Telescopic handle & reinforced saltwater resistant wheels
- 1 main rigid case + 1 detachable backpack
- Dimensions: 66 x 40 x 32cm, Weight: 3.98kg, Volume 84L

CARAVAN BAG



X53.350.120

- Ideal travel bag with large volume
- Exterior material combination of 420D Nylon NT, 450D Ripstop & 600D Polyester/PU
- Inside lining 150D Polyester/PU
- YKK salt water resistant double slider zippers
- Polyester thread
- External compression straps, retractable double bar trolley handle, side, top & bottom carry handles & reinforced saltwater resistant wheels
- Main compartment with U-shaped top, 2 sides + 1 top flat pockets
- Dimensions: 70 x 40 x 35cm Weight: 3.9kg, Volume 98L

MESH SACK



X53.369.000

- Bag opening secures with a top rope fitted with a sliding, spring-loaded button closure
- Main compartment handles the larger-sized gear while the front exterior pocket is perfect for small items
- Padded shoulder strap makes it easy to sling the bag for the hike down to the boat or beach
- Folds into a compact size for storage
- Dimensions: 66 x 39cm diameter Weight: 0.5kg, Volume 80L

DRY BAG BACK PACK



X53.399.180



- Made of 500D heavy-duty PVC Tarpaulin
- Watertight due to heat sealed construction
- Padded backpack system equals convenient, hands-free carrying
- Roll-and-close opening makes for easy access to contents
- Dimensions: 76 x 33 x 20cm, Weight: 0.61kg, Volume 45L

MESH BAG



X53.379.000



- Made of nylon mesh
- Top loading with U-shaped zipper
- Saltwater-resistant YKK vision zipper features double sliders
- Padded carry handles
- Dimensions: 70 x 40 x 30cm Weight: 0.45kg Volume 84L

DUFFLE BAG HD



X53.339.190

- Made of a durable yet lightweight combination of 420D nylon NT, 450D Ripstop and 600D polyester with polyester thread stitching
- Inside lining is made of 150D polyester/PU
- Ultra-soft construction makes it super easy to fold and store when not being used
- Main zippers are YKK saltwater resistant and feature double sliders for easy access
- Padded carry handle lets you conveniently tote or lift the bag over uneven terrain
- Dimensions: 80 x 40 x 35cm Weight: 900g Volume: 112L

CABIN BAG 4 WHEELS



X53.365.170



- Made of 500D heavy-duty PVC Tarpaulin
- Retractable double bar trolley handle with reinforced in-line skate wheels, side & top carry handles
- Large main compartment with U-shaped double-slide coil zipper
- Smaller pockets on the inside & outside
- Conforms to new IATA size regulations
- Side & top carry handles make easy work of lifting the bag into overhead compartments
- Dimensions: 53 x 37 x 19cm, Weight: 3.18kg, Volume 37L

MICRO CASE



- N1010: 11.1 x 7.3 x 4.3cm
- N1020: 13.5 x 9.0 x 4.3cm
- N1030: 16.2 x 6.7 x 5.2cm
- N1040: 16.5 x 9.8 x 4.4cm

	N1010	N1020	N1030
Blue	N1010-B	N1020-B	N1030-B
Black	N1010-K	N1020-K	-
Red	-	N1020-R	N1030-R



N1010



N1020



N1030

CABLE PADLOCK



N1506TSA

- Fits all Pelican cases
- TSA approved
- No key required; choose from 999 combinations

CASE 1120



N1120

- Interior: 18.5 x 12.1 x 8.5cm
- Exterior: 21.4 x 17.2 x 9.8cm
- Colour: Black

CASE 1150



N1150

- Interior: 21.1 x 14.7 x 9.5cm
- Exterior: 24 x 19.8 x 10.9cm
- Colour: Black

CASE 1170



N1170

- Interior: 26.8 x 15.3 x 8cm
- Exterior: 29.6 x 21.2 x 9.6cm
- Colours: Black, Orange, Yellow



CASE 1200



N1200

- Interior: 23.5 x 18.1 x 10.5cm
- Exterior: 27 x 24.6 x 12.4cm
- Colour: Black

CASE 1300



N1300

- Interior: 23.3 x 17.8 x 15.5cm
- Exterior: 27 x 24.6 x 17.4cm
- Colour: Black

CASE 1400



N1400

- Interior: 30 x 22.5 x 13.2cm
- Exterior: 34 x 29.5 x 15.2cm
- Colour: Black

CASE 1450



N1450

- Interior: 37.2 x 26 x 15.5cm
- Exterior: 41.8 x 33 x 17.3cm
- Colour: Black

CASE 1500



N1500

- Interior: 42.5 x 28.4 x 15.5cm
- Exterior: 47 x 35.7 x 17.6cm
- Colour: Black

CASE 1510



N1510

- Interior: 50.2 x 27.9 x 19.3cm
- Exterior: 55.9 x 35.1 x 22.9cm
- Colours: Black, Tan



CASE 1520



N1520

- Interior: 45.9 x 32.7 x 17.1cm
- Exterior: 50.2 x 40.1 x 18.8cm
- Colour: Black

CASE 1560



N1560

- Interior: 50.6 x 38 x 22.9cm
- Exterior: 56.1 x 45.5 x 26.5cm
- Colour: Black

CASE 1600



N1600

- Interior: 54.6 x 42 x 20.3cm
- Exterior: 62 x 49.2 x 22.3cm
- Colour: Black

CASE 1610



- Interior: 55.3 x 42.4 x 27cm
- Exterior: 63.1 x 50 x 30.2cm
- Colour: Black

N1610

CASE 1620



N1620

- Interior: 54.6 x 41.7 x 31.9cm
- Exterior: 62.9 x 49.7 x 35.3cm
- Colour: Black



PELICAN
You break it, we replace it...forever.

STORM LED LIGHT 1050 LUMENS



DBBRDIV05

- Aviation aluminum body
- Battery type: 1 x 18650 lithium battery (included)
- Charger for 18650 (included)
- Waterproof to 150m (500ft)
- Drop resistant 1.5m
- Burn time 2 hrs
- LED Cree XM-L2
- Tempered glass
- Rotary switch

TORNADO LED LIGHT 1050 LUMENS



DBBRDIV12S

- Battery type: 1 x 18650 lithium battery (included)
- Charger for 18650 (included)
- Battery indicator: Green 100-30%, Red 30-10%, Flashing Red > 10%
- Waterproof to 100m (330ft)
- Burn time Full 2 hrs, Low 5 hrs
- Drop resistant 1.5m
- Aviation aluminum body
- LED Cree XM-L2
- Push switch
- Tempered glass

CAVE MASTER LIGHT 1500 LUMENS



NEW



DBBRDIV20S

- Aircraft grade high strength aluminum alloy body with anodized finish
- Waterproof to 150 meters
- Titanium alloy push switch with Battery power indicator
- Two power settings: 1500 lumens – Runtime 7 hours, 500 lumens – Runtime 17 hours
- Dimensions: 45mm (Head Diameter) 54mm (Canister Diameter) 1520mm (Length)
- Adjustable Goodman handle

COMPACT TORCH 180 LUMENS



NEW



DBBRDIV18

- Durable Aluminum alloy body
- Waterproof to 200 meters
- Twist on/off operation
- Two power settings: 1 x AA battery 180 lumens – Runtime 1.3 hours, 1 x 14500 lithium battery 630 lumens – Runtime 1 hour
- Dimensions: 26mm (Head Diameter) 20mm (Body Diameter) 97mm (Length)
- Optional Mask Mount available

TYPHOON TORCH 3800 LUMENS



NEW



DBBRDIV15S

- Durable Aluminum alloy body
- Waterproof to 150 meters
- Titanium Alloy push switch with battery indicator
- Two power settings: 3,800 Lumens – Runtime 1.5 hours, 1,300 Lumens – 3.5 hours.
- Dimensions: 64mm (Head Diameter) 34mm (Body Diameter) 231mm (Length)
- Utilizes two 26650 Rechargeable Batteries

FUSION 400 400 LUMENS

TOVATEC

NEW



MSSFUS400

- Four way visual battery charge indicator
- Use with both lithium-ion and alkaline batteries
- 400 lumen output
- Adjustable 12 degree (narrow beam) to 100-degree beam angle (wide beam)
- 100%, 50%, 30% power level
- Emergency strobe

FUSION 1500 1500 LUMENS

TOVATEC



MSSFUS1500

- 1500 lumens of maximum power
- 180 minutes of autonomy at 100%
- Lit in 3 positions 100%, 50%, 30% and SOS
- Submersible up to 100m
- Measures 190mm x 40mm (48mm head)
- Weight: 490 grams without batteries
- Battery 26650 of 4500mAh (included)
- Supports tye 32650 battery (not included)
- Can work with three AA batteries
- USB and 220v charger

FUSION 1050 1050 LUMENS

TOVATEC



MSSFUS1050

- 1050 lumens of maximum power
- 150 minutes of autonomy at 100%
- Lit in 3 positions 100%, 50%, 30% and SOS
- Submersible up to 100m
- Measures 173mm x 31mm (31mm head)
- Weight: 273 grams without batteries
- It can work with three AAA batteries
- USB charger
- Delivered with 18650 battery 2200mAh

COMPACT TORCH 285 LUMENS

TOVATEC

MSSICOM-II



- Battery: 3 x AAA (not included)
- Burn time: 3hrs
- Variable Power: Full / 30% / strobe
- Depth rating 328ft / 100m
- Multi function magnetic side switch

SEA SQUIRT TORCH

TOVATEC

MSSTORCH-HL1



- Battery: 4 x AAA (not included)
- Waterproof to 30m (100ft)
- Burn time: 6hrs
- 5 LED (1W), 25 lumens

TORCH MASK MOUNT



DBZDIV18Mount



- Strong plastic clip
- Replaceable securing O-ring
- Lightweight and easy to use

LED STROBE LIGHT



SAL15A



- Waterproof: 60m (200ft)
- Battery: 3 x AA (not included)
- Strobe burn time: (72+ hours)
- Flash Rate: 36-40 times per minute
- Dimensions: (L x Dia.) 12cm x 5cm

UNDERWATER LASER POINTER



NEW

SAL-11SS-FY



- High Visibility Red Laser Light Beam
- Lightweight Easy Grip Plastic Housing
- Easy to Use Magnetic Spring Switch
- Wrist Lanyard Included
- Waterproof to 60 meters
- 2 x AA Cell Batteries (not included)

UNDERWATER KINETICS BEACON CYALUME LIGHT



TDL27



- Length 22.86cm (9")
- Battery: 2 x AAA (included)
- Electric cyalume light, with backup glow in the dark plastic head and lanyard strap

LED LIGHT



SAL02-FY



- High intensity
- 150 lumens
- Burn time 2.5 hrs
- Battery 2 x AA (not included)
- Waterproof to 60m (200ft)
- Easy to grip housing
- Simple rotary switch
- Bulb: CREE XPE-R5 LED
- Dimension: 16cm
- Lanyard (included)
- Available in yellow

SIGNAL LIGHT



White...DBBSD01-W
Green...DBBSD01-G
Red...DBBSD01-R
Blue...DBBSD01-B
Yellow...DBBSD01-Y

- Tank design aluminum alloy body with anti-corrosion finish.
- Twist on/Twist off operation.
- Pulses with a soft glow 3 times per second.
- Waterproof to 150 meters.
- Runtime 108 hours.
- Dimensions: 19mm (Body Diameter) 77.5mm (Length)

Available in multiple beam colours: Blue, Red, Green, White or Yellow.
Accessories Included: Lanyard, 1 x AAA Battery and Spare O-Rings.

BATTERIES & CHARGER



MAA2 / MAA4



MAAA4



MSSIT123



DBZ14500BAT



DBZ18650BAT



MCR2BAT



DBZ18650CHR

Energizer MAX AA (2Pack)...MAA2
Energizer MAX AA (4Pack)...MAA4
Energizer MAX AAA (4Pack)...MAAA4
Intova CR123 Lith. Battery 3V...MSSIT123
Rech. Battery 14500 - 900 mAh...DBZ14500BAT
Rech. Battery 18650 - 2600 mAh...DBZ18650BAT
CR2 Battery, Lithium...MCR2BAT
Charger for Battery 18650 Li-ion...DBZ18650CHR

LED FLASHING LIGHT



SAL-73



- Automatically turns on in water
- Diameter 2.54 x 4.3cm
- Bright flashing LED
- Depth: approx. 60m (200ft)
- Life rating: 300hrs
- Led colour: Green



MAKO KNIFE TITANIUM / STAINLESS

SCUBAPRO



Titanium

Titanium...X32022
Stainless Steel...X32023

- Features a conventional edge, line cutting notch, serrated edge for rope cutting, bottle opener & QR sheath with locking mechanism
- Titanium: extreme resistance to corrosion with durable edge
- Stainless Steel: excellent cutting edge & high resistance to rust
- Blade length: 8.5cm
- Overall length: 19cm

WHITETIP BCD KNIFE

SCUBAPRO



X32002

- Compact stainless steel classic blade plus multi-use serrated edge
- Includes locking sheath & kit for BC/ hose attachment
- Blade length: 6.6cm
- Overall length: 14.7cm

K6 KNIFE

SCUBAPRO



X320061

- Classic 15.5cm stainless steel blade with hammer in handle
- QR locking sheath

SEA SNIP

SEA SNIP

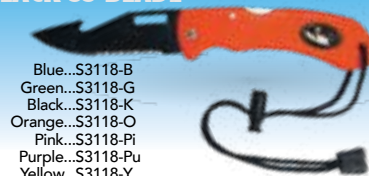


SAS11N

- Cuts through line, net, rope, kelp & thin steel cable
- Works well in emergency situations where a knife might not
- New connector allows for mounting on BCD, weight belt or leg

FOLDING KNIFE BLACK SS BLADE

SEA SNIP



Blue...S3118-B
Green...S3118-G
Black...S3118-K
Orange...S3118-O
Pink...S3118-Pi
Purple...S3118-Pu
Yellow...S3118-Y

- Blade: 304 stainless steel with black electro-plating
- Blade length: 9.1cm
- Corrosion resistant & non-reflective black blade
- Sharp tip with half serrated edge & line cutter
- Adjustable wrist lanyard
- Compact, lightweight & perfect for carrying on all your diving trips
- Colours: Black, Blue, Green, Pink, Purple, Orange, Yellow



STAINLESS DIVE KNIFE

SEA SNIP



Blue...S3007-B
Clear...S3007-C
Green...S3007-G
Black...S3007-K
Yellow...S3007-Y



- Mount to belt, BCD strap or BCD pocket
- Sharp tip with serrated edge plus line cutter
- Colours: Black, Blue, Yellow, Green & Clear
- Blade length: 8cm

MESH CUTTER

SCUBAPRO



X32065

- Lanyard eyelet in handle for easy attachment
- Unique curved cutting edge design for pull cutting rather than push cutting, for better safety against accidents
- Contoured shackle spanner tool especially useful for boat divers
- Includes polyester case for safe storage & transport
- Overall length of cutter 7.5cm

TITANIUM / STAINLESS KNIFE

SEA SNIP



Titanium



Stainless Steel



Stainless Steel, Black...S3006-K
Stainless Steel, Yellow...S3006-Y
Titanium...S3006-T

- Quality rubber strap with quickrelease buckle
- Quick-release locking plastic sheath
- Blade length: 14cm

GALAXY MINI FOLDING KNIFE

AQUATEC



UKN100

"Big enough to slice an apple & small enough to store in a small pocket. The serrated blade is made from surgical quality 420 stainless steel blade it's tough enough to handle years of use & abuse."

- Material: 420 Stainless steel
- Over-all length: 95mm
- Blade length: 28mm
- Blade thickness: 2mm
- Weight: 21.5 gram

LINE CUTTER

SEA SNIP



SAC03

- Includes extra blades

FOLDING KNIFE

SEA SNIP



Titanium

Stainless Steel

Sheath

Stainless Steel...S3008
Titanium...S3008T
Nylon Sheath...SAH12

- Titanium: no rust, no magnetism, & no maintenance
- Stainless Steel: made of 301 SS, no rust, durable knife blade
- Versatile lanyard included
- Foldable; easy to carry in sheath or pocket
- Blade length: 10cm
- Optional sheath available

SOFT POCKET WEIGHT BELTS



3 Pockets...DB5000
4 Pockets...DB5001

WEIGHT KEEPER



SAW06



SAW07



SS-928



SS-928B



SS103



SAW03

Weightbelt Keeper, SS...SAW06
Weightbelt Keeper, SS...SAW07
D-Ring for Weightbelt, SS...SS-928
Bent D-Ring for Weightbelt, SS...SS-928B
Weightbelt Keeper w. D-Ring, SS...SS103
Plastic Weight Keeper...SAW03

WEIGHTBELT WEBBING



M1998



Webbing Roll (50m), Blue...M1998B
Webbing Roll (50m), Yellow...M1998Y
Webbing Roll (50m), Black...M1998K
Webbing 1.4m, Blue...M1999-1.4B
Webbing 1.4m, Yellow...M1999-1.4Y
Webbing 1.4m, Black...M1999-1.4K
Webbing 1m, Blue...M1999-1B
Webbing 1m, Yellow...M1999-1Y
Webbing 1m, Black...M1999-1K

WEIGHT BELT BUCKLES



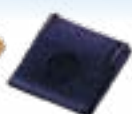
UBK304



UBK504



S4001



SS Buckle - 2 Slots...UBK304
SS Buckle - 3 Slots...UBK504
Plastic Buckles, Yellow...S4001-Y
Plastic Buckles, Black...S4001-K

WEIGHT BELT & BUCKLES



SAW02



X23.029.100



X23.030.100

M1999+Buc



B198



B1971

Saekodive Weighbelt w. Buckle - Black...SAW02-K
Saekodive Weighbelt w. Buckle - Blue...SAW02-B
Saekodive Weighbelt w. Buckle - Yellow...SAW02-Y
Scubapro Weighbelt w. Stainless Buckle - Black...X23.029.100
Scubapro Weighbelt w. Nylon Buckle - Black...X23.030.100
Deep Blue Weighbelt w. Buckle 1.4m - Black...M1999+Buc-K
Deep Blue Weighbelt w. Buckle 1.4m - Blue...M1999+Buc-B
Deep Blue Weighbelt w. Buckle 1.4m - Yellow...M1999+Buc-Y
Seac Rubber Weighbelt w. Nylon Buckle...B198
Seac Rubber Weighbelt w. Stainless Buckle...B1971

SCUBA ALERT SIGNAL DEVICE

AQUATEC

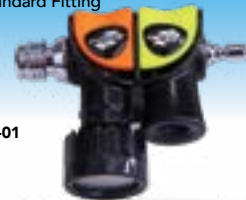


UAH150-01

SCUBA HORN

AQUATEC

• Duo Alert Standard Fitting



UAH380-01

UNDERWATER RATTLER



Blue...DB6700-B
Yellow...DB6700-Y
Red...DB6700-R
Black...DB6700-K



TANK BANGER



SAT-29

TTA20



UW Pointer / Tank Banger...SAT-29
Tank Banger - Pink...TTA20-PI
Tank Banger - Yellow...TTA20-Y
Tank Banger - Green...TTA20-G
Tank Banger - Black...TTA20-K
UW Pointer Aluminium Gray...DBYP001-Gy
UW Pointer Aluminium Pink...DBYP001-PI
UW Pointer Aluminium White...DBYP001-W
UW Pointer Aluminium Yellow...DBYP001-Y

DBYP001



LEAD WEIGHTS



M6000-SRD

M6000-BRD

0.8kg Lead...M6000-SRD
1.5kg Lead...M6000-BRD

New round shape:
• Avoids equipment entanglement
• More ergonomic fit

WHISTLE



SAW10



TD611



SAW11



TDA14



DBYWH001



High Pitch...SAW10
Wind Storm - Yellow...TD611-Y
Wind Storm - Orange...TD611-O
Wind Storm - Black...TD611-K
St&ard...SAW11
SOS Whistle...TDA14
SOS Whistle Pink...DBYWH001-PI
SOS Whistle Yellow...DBYWH001-Y

RESCUE MARKER w. BAG

DEEPBLUE



DBSM02

Rescue Marker with Bag...DBSM02
Rescue Marker w/o Webbing...DBSM04

- 145cm(57") x 15.5cm (6")
- Signal Orange / Neon Yellow combo
- Durable 210 denier nylon fabric
- Webbing strap with marine grade stainless steel ring & snap hook
- Compact carry pouch for BCD attachment

DIVE MARKER

DEEPBLUE



Yellow...DBYSMB1-FY
Pink...DBYSMB1-Pi

- 180cm x 18cm (6ft)
- dump open end
- Available in Pink & Yellow

POCKET RESCUE MARKER

DEEPBLUE



DBSM01

- 152cm x 14cm (60" x 5.5")
- Signal Orange / Neon Yellow combo
- Durable 210 denier nylon
- Securely retained by an elastic bungy cord

WEBBING STRAP DEEP BLUE

DEEPBLUE



- Webbing Strap for Rescue Marker, 5.5m

DBSM03

INFLATABLE SURFACE / RESCUE FLOAT

DEEPBLUE



DBYFB005

SNORKELING VEST

DEEPBLUE



DBL30

DBLSTRAP

Junior - XS...DBL309-XS
Junior - S...DBL309-S
Adult - M...DBL302-M
Adult - L...DBL302-L
Adult - XL...DBL302-XL
Adult - XXL...DBL302-XXL
Crotch Strap XS-L...DBLSTRAP-A
Crotch Strap XL-XXL...DBLSTRAP-B

SAFETY BALLOON

DEEPBLUE



DB6690

DB8004

Safety Balloon...DB6690
Safety Balloon with Bag...DB6691
Safety Balloon Bag...DB8004

DB6691

LIFE VEST

DEEPBLUE



DBJ03

DBJ02

Government approved
• Adult (fits: S-XXL)

MASK BOX



DB51

MARKER BUOY

SCUBAPRO



210D Nylon, 140x18cm...X40.312.001
210D Nylon, 180x18cm...X40.316.000

X40.312.001
X40.316.000

SURVIVAL SAUSAGE

SAEKODIVE



SB-06

SB-02

Survival Sausage with Pouch...SB-06
Survival Sausage...SB-02

LIFT BAG

seac



Lift Bag 100kg...B1900

DIVER'S FLOAT DEEP BLUE



DBS30



LIFT BAG TRIDENT



Lift Bag 35kg w. Dump Valve...TSL15
Lift Bag 75kg...TSL20

STICKERS & TAPE



M99997



TDS07



M99998



M99999

Oxygen Sticker for Tank...M99997
Nitrox Valve Tape...TDS07
O2 Clean Sticker...M99998
EAN Tank Sticker...M99999

SLATE



Slate A4...SAW13
Slate w. Quick Connect 15x13cm...DBWR1
Wrist Slate 3 Piece Multi Page...SAW15
Slate & Graphite Pencil...TSL-19-Y
Graphite Pencil...TSL-13-Y
Quest Magnetic Slate...TSL05

LANYARD



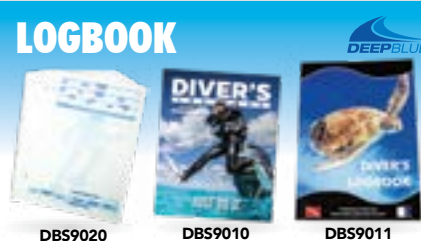
Lanyard...SAL21
Camera Lanyard with Brass Clip...TRP09
Deluxe Stretch Lanyard...TRP08

FISH ID SLATE



Fish Card - Fish & Nudibranchs...M21001
Fish Card - Fish & Corals...M21002

LOGBOOK



Log Pages for All Standard Binders...DBS9020
Divers Log Book 15cm x 12cm...DBS9010
Divers Log Book 14.5cm x 20.5cm...DBS9011

LOGBINDER



"DIVE LOG"...DB8005
Add Your Custom Logo...DB8005-C
"DIVE NOW..."...DB8006
"BORN TO DIVE"...DB8007

RETRACTOR

SAR13A

SAR13C



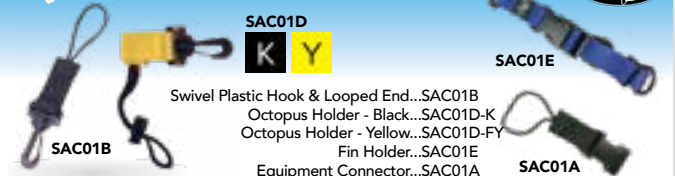
Auto Lock Retractor 90cm...SAR-03A
Retractor 3m...SAR03C
40cm SS Line - 2 Clips...SAR13A
40cm SS Line - Clip/Ring Black...SAR13C-K
40cm SS Line - Clip/Ring Yellow...SAR13C-Y

EQUIPMENT CONNECTORS

SAC01D

K Y

SAC01E



Swivel Plastic Hook & Looped End...SAC01B
Octopus Holder - Black...SAC01D-K
Octopus Holder - Yellow...SAC01D-FY
Fin Holder...SAC01E
Equipment Connector...SAC01A



REEL COMPASS



Finger Reel 45m, orange reel - yellow line...SAR06-O/Y
Finger Reel 45m, yellow reel - orange line...SAR06-Y/O
Scubapro Multifunction Reel 80m...X40.122.000
Wreck Reel Auto Stop 85m...SAR05
Wreck Reel Auto Stop 45m...SAR15
Wreck Reel 45m...SAR14



X40.122.000



SAR05



SAR15



SAR14



SAR06



SAR16

SAR16-



SAR26



SAR26-



SAR26S



DBYAR01



DBYAR02



SAR-0



SAR07



SAR08



SAR09

Regulator Necklace - Black...SAR07-K
Regulator Necklace - Yellow...SAR07-Y
Quick Release Coil Lanyard...SAR-0
Quick Release Coil Lanyard - Black...SAR08-K
Quick Release Coil Lanyard - Blue...SAR08-B
Cable Wire Coil Lanyard...SAR09

SNORKEL HOLDER



S1360

DBZ08-K



S1060



DBZ20

Snorkel, Holder...S1360
Plastic, Black...DBZ08-K
Plastic, Black...S1060
Silicone, Clear...DBZ20-C
Silicone, Black...DBZ20-K

MASK STRAP RETAINER



DBZ01-K



SHLT



X26.021.002

Mask Strap, Black...DBZ01-K
Mask Strap ...SHLT
Quick Clip...X26.021.002

BUCKLES



BS75106

BS75073

BS75075

Male Buckle 25mm...BS75106
Male Buckle 40mm...BS75073
Female Buckle 40mm...BS75074
Male Buckle 50mm...BS75075
Female Buckle 50mm...BS75076

MASK BUCKLES



S083



DBZ19



DBZ06-QR



DBZ15



DBZ07



DBZ12-K



DBZ17



DBZ16

Mask Buckle - Black...S083-K
Mask Buckle - Clear...S083-C
Buckle Set BORA+ - Black, Orange...DBZ06-QR
Bora+ Roller Pin for Mask Buckle...DBZ19
Buckle & Housing Set (Fiji Mask)...DBZ07
Buckle Set (Fiji Mask)...DBZ12-K
Buckle (Bali Mask)...DBZ15
Buckle (Covert Mask)...DBZ17
Buckle (Mako Mask) 1 pcs...DBZ16

NECK LATEX EYEWEAR STRAP



1pc. - Blue...TDA03-1-B
1pc. - Green...TDA03-1-G
1pc. - Blac/Grey...TDA03-1-K/Gr
1pc. - Orange...TDA03-1-O
1pc. - Pink...TDA03-1-P
6pc. - Yellow...TDA03-1-Y

6pc. - Blue...TDA03-6-B
6pc. - Green...TDA03-6-G
6pc. - Black...TDA03-6-K
6pc. - Orange...TDA03-6-O
6pc. - Pink...TDA03-6-P
6pc. - Yellow...TDA03-6-Y

Display w. 72 straps...TDA02-72

EYEGLASS HOLDER STRAP



1pc. - Blue...TDA93-1-B
1pc. - Green...TDA93-1-G
1pc. - Black...TDA93-1-K
1pc. - Yellow...TDA93-1-Y

MASK & GOGGLE STRAPS

DB6688-1



DB6688



DB6689-1



DB6689



X24.730.0x0



X24.700.0x0



X24.700.0x0



XZ24.845.102



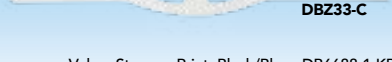
XZ24.845.104



DBZ33-KS



DBZ33-C



Velcro Strap w. Print, Black/Blue...DB6688-1-KB
Velcro Strap w. Print, Black/Black...DB6688-1-KK
Velcro Strap w. Print, Black/Red...DB6688-1-KR
Velcro Strap w. Print, Black/Yellow...DB6688-1-KY
Velcro Strap w/o Print, Black/Blue...DB6688-KB
Velcro Strap w/o Print, Black/Black...DB6688-KK
Velcro Strap w/o Print, Black/Red...DB6688-KR
Velcro Strap w/o Print, Black/Yellow...DB6688-KY
Neoprene w. Print, Black/Blue...DB6689-1-KB
Neoprene w. Print, Black/Black...DB6689-1-KK
Neoprene w. Print, Black/Yellow...DB6689-1-KY
Neoprene w/o Print, Black/Blue...DB6689-KB
Neoprene w/o Print, Black/Black...DB6689-KK
Neoprene w/o Print, Black/Yellow...DB6689-KY
Comfort - B,K, K/K, K/Y, Pi/Pu, Tq...X24.730.0x0

NEW

S1072



S1073S



S1074KS



S1074S



S1079KS



S1079S



Mask Strap Cover 2.5mm Blk/Gry...X24.700.030
Mask Strap Cover 2.5mm Blk/Pur...X24.700.040
Mask Strap Cover 2.5mm Blk/Yel...X24.700.050
Mask Strap Cover 2.5mm Blk/Org...X24.700.060
Mask Strap Cover 2.5mm Blk/Blu...X24.700.070
Mask Strap Cover 2.5mm Blk/Wht...X24.700.080
Mask Strap Cover 2.5mm Blk/Blk...X24.700.090
Mask Strap Cover 2.5mm Blk/Pi...X24.700.100
Clear Silicone, Spectra/Marin...XZ24.845.102
Black Silicone, Spectra/Marin...XZ24.845.104
22mm Clear Silicone, BORA...DBZ33-C
22mm Black Silicone, BORA...DBZ33-KS
Rubber - width 2cm...S1072
Silicone - width 2cm...S1073S
Black Silicone...S1074KS
Clear Silicone...S1074S
Swimgoggle Black...S1079KS
Swimgoggle Clear...S1079S

REEF HOOK



TDF82

SWIVEL BOLT SNAP HOOK



SS225-92

FIN STRAPS / BUCKLES



DBF770KIT



XZ25.071.005



DBZ52



DBZ50



S271



BZ513



DBZ51

Strap Kit for Fin DBF770...DBF770KIT
Fin Buckle for DBF770...DBF770BUCKLE
Fin Strap for DBF770...DBF770STRAP
Twin Jet Strap Kit...XZ25.071.005
2 Buckles for Speed3...DBZ52
Fin Strap for Speed3...DBZ50
Quick Release Fin Buckle...S271
Propulsion Fin Buckle...BZ513
Fin Buckle Speed3...DBZ51

FIN SPRING STRAPS

B K Y
B730023 / B730024



S1775



S1875

XZ25.365

Sling Strap - Propulsion Fin, Small Blue...B730023-B
Sling Strap - Propulsion Fin, Small Black...B730023-K
Sling Strap - Propulsion Fin, Small Yellow...B730023-Y
Sling Strap - Propulsion Fin, Regular Blue...B730024-B
Sling Strap - Propulsion Fin, Regular Black...B730024-K
Sling Strap - Propulsion Fin, Regular Yellow...B730024-Y
Spring Strap w. Buck. S, Set...S1775-S
Spring Strap w. Buck. M, Set...S1775-M
Spring Strap w. Buck. L, Set...S1775-L
Spring Strap w. Buck. XL, Set...S1775-XL
Spring Strap size S (Set)...S1875-S
Spring Strap size M (Set)...S1875-M
Spring Strap size L (Set)...S1875-L
Spring Strap size XL (Set)...S1875-XL
Spring Heel Straps - Jet Fin M...XZ25.365.305
Spring Heel Straps - Jet Fin L...XZ25.365.405
Spring Heel Straps - Jet Fin XL...XZ25.365.505
Spring Heel Straps-Jet Fin XXL...XZ25.365.605

FIN STRAPS



BZ07001-2



S1075



SA004A

Seac Sprint Fin Strap, XXS/S...BZ07001
Seac Sprint Fin Strap, S/XL...BZ07002
Saekodive Fin Strap / 1 Piece...S1075
Saekodive Jet Fin Strap...SA004A

KNIFE STRAP

S1077-2



S1077



TKN02

Quick Release Knife Strap...S1077-2
Rubber Knife Strap...S1077
Knife Strap with Spring...TKN02

MOUTHPIECE HOLDER

• Hook, 92mm



SAM-050

ALUMINIUM SNAP HOOK



Snap Hook 80mm...SAS-12DF-8
Snap Hook 70mm...SAS-12DF-7
Snap Hook 60mm...SAS-12DF-6
Snap Hook 50mm...SAS-12DF-5

HOSE CLIP/CLAMP



PI W Y
DBYPC001

K Y
SAH01

B K Y
SAH09

G K
UHH07

Ergonomic Swivel Hose Clip, Pi...DBYPC001-Pi
Ergonomic Swivel Hose Clip, W...DBYPC001-W
Ergonomic Swivel Hose Clip, Y...DBYPC001-Y
Double Hose Clamp - Black...SAH01-K
Double Hose Clamp - Yellow...SAH01-Y
Triple Hose Clamp - Blue...SAH09-B
Triple Hose Clamp - Black...SAH09-K
Triple Hose Clamp - Yellow...SAH09-Y
Double Hose Clip - Green...UHH07-G
Double Hose Clip - Black...UHH07-K
Ergonomic Swivel Hose Clip...SAH23

BRASS CLIPS



Brass Clip (L) 120mm...S4002-120
Brass Clip (L) 120mm...S4003-120
Brass Clip (S) 88mm...S4003-88
Brass Clip (S) 95mm...S4002-95

DOUBLE ENDED SNAP HOOK



Hook, 115mm...SS163-115
Hook, 100mm...SS162-100
Hook, 90mm...SS161-90

STAINLESS SNAP HOOK



Stainless Steel Snap Hook...S2450-80
Stainless Steel 60mm Hook...SS243-6
Stainless Steel 80mm Hook...SS243-8

OCTOPUS HOLDER / RETAINER



Octopus Holder - Green...SAM-02-G
Octopus Holder - Yellow...SAM-02-Y
Magnetic Octopus Holder...SAC06
Non-Magnetic Octopus Holder...SAC06A
Octopus Retainer...XZ01.097.134

GEAR HANGER



Universal - Blue...SAH06-B
Universal - Black...SAH06-K
Universal - Yellow...SAH06-Y

SHOULDER DUMP VALVE

B75038

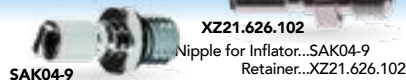
REAR WEIGHT HOLDER

B769

DIN CONVERSION

X10.045.030

RETAINER



SAK04-9

Nipple for Inflator...SAK04-9
Retainer...XZ21.626.102

SWIVEL



DBT30019

Seakodive Swivel - 360°...SAS-16
Uwatec Swivel w. O-Rings...XZ06.203.548
Suunto HP Swivel...F1000V5593
HP Swivel Disc & O-Rings...DBT30019



SCHRADER VALVE

XZ21.562.106



MA59

For Most Inflators...MA59
Scubapro...XZ21.562.106

DIN ADAPTOR

WMDCH-DIN



SDY-1



SDY-3F#1



SAA08



X10.019.100

300BAR Din To Yoke...WMDCH-DIN
DIN Adaptor Saekodive...SDY-1
Yoke Screw for DIN Adaptor...SDY-3F#1
Pin Index to DIN Adaptor...SAA08
SCUBAPRO DIN to Yoke Adapter...X10.019.100

OVERPRESSURE VALVES



UOV1811

XZ21.200.003

B55006

Kit Overpressure Valve...XZ21.200.003
Pull Ball...UOV1811
Seac...B55006

CORRUGATED HOSES



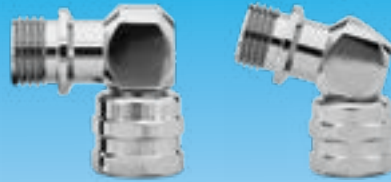
B75020

X01.030.114

X01.030.113

Seac Corrugated Hose...B75020
Scubapro 16", Classic Plus/Sport...X01.030.114
Scubapro 14", Classic Plus/Sport...X01.030.113

REGULATOR ADAPTER / SWIVEL



WMDAB-05

WMDAB-07



WMDUA-1

WMDUA-4

WMDUA-7



WMDUA-8

WMDUA-9



WMDAB-12

WMDUA-16



WMDUA-23

LP 90° Adapter...WMDAB-05
LP 110° Adapter...WMDAB-07
9/16" M to 3/8" F...WMDUA-1
3/8" M to 1/2" F...WMDUA-4
1/2" M to 3/8" F...WMDUA-7
LP Swivel 90°...WMDUA-8
HP Splitter...WMDUA-9
9/16" Y-Adapter FFxM...WMDAB-12
HP Swivel 90°...WMDUA-16
360° LP Adapter...WMDUA-23

HIGH PRESSURE HOSES



XZ01.344.005

Scubapro hose 80cm...X01.044.031
Hose (made in Italy) 31.5"/80cm, dia 10.8mm...DBT30016-01
Hose (made in Italy) 6"/15cm, dia 12.5mm...DBT30017-01
Scubapro Hose Quick Connector...XZ01.334.005

COMPLETE INFLATOR SYSTEM



B75040

LOW PRESSURE HOSES



SAH-03

SAH-04



XZ21.626.013

SAT20

SAT19

Regulator hose 75cm...SAH-03-K-75
Octopus hose 95cm, Black...SAH-03-K-95
Octopus hose 95cm, Yellow...SAH-03-Y-95
Regulator hose 210cm...SAH-03-K-210
Regulator hose 150cm, Black...SAH-03-K-150
LP inflator hose 65cm...SAH-04-K-65
LP inflator hose 20cm...SAH-04-K-20
Scubapro hose 2nd Stage 65cm...XZ01.310.026
Scubapro hose 2nd Stage 75cm...XZ01.309.035
Scubapro octopus hose 100cm...XZ01.310.040
LP inflator hose air 2, 64cm, Black...ULP350-02
Adaptor, Inflator quick connector...XZ21.626.013
Tire Inflator...SAT20
Tire Inflator...SAT19

HOSE PROTECTOR



S4004

XZ11.700.0x0

K

Y

G

K

B

Y

DBT30018

DB20070-07



SAH02

B

G

Scubapro - Black...XZ11.700.010
Scubapro - Yellow...XZ11.700.030
Scubapro - Green...XZ11.700.050
Hose Protector Black...S4004-K
Hose Protector Blue...S4004-B
Hose Protector Yellow...S4004-Y
Hose Protector - Black...DBT30018
Deep Blue - Yellow...DB20070-07-Y
Deep Blue - Black...DB20070-07-K
Plastic Wrap - Blue...SAH02-B
Plastic Wrap - Green...SAH02-G

MOUTHPIECE & HOSE PROTECTOR

SCUBAPRO



MP & Hose Protector Kit:

Hydros Blue...XZ01.040.330
Hydros Yellow...XZ01.040.360
Hydros Pink...XZ01.040.370
Hydros Orange...XZ01.040.390
White...XZ01.040.080
Purple...XZ01.040.019

Hose protector:

Purple...XZ11.700.019
Hydros Blue...XZ11.700.223
Hydros Yellow...XZ11.700.225
Hydros Orange...XZ11.700.226
Hydros Pink...XZ11.700.227

MOUTHPIECE



XZ01.040.025



XZ01.040.026



S1063



S1163KS



S1163S



S1363S



S1563KS



S1563S



S1663KS



S1763



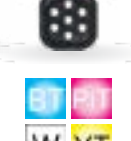
S1863



XZ01.040.131



XZ01.040.120



XZ01.040.133



XZ01.040.051



XZ01.040.705



DBZ1463KS



DBZ1463S



XZ01.040.131



DBZ1463S

O-RING KIT



TD601



TD602



TD603



TD604



TD602



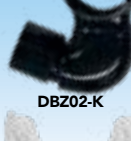
TD603



TD604

SNORKEL MOUTHPIECE

Mouthpiece for J Snorkel, Black...DBZ02-K
Mouthpiece for J Snorkel, Clear...DBZ03-C
Mouthpiece for Manta/Sharky, PVC Clear & Black...DBZ04
Mouthpiece for Manta/Sharky, Clear Silicone...DBZ05-C
Mouthpiece for COVERT Snorkel, Silicone, Black...DBZ09-K
Purge Valve Manta, Mako, Stingray...DBZ13
Mouthpiece S1052 Silicone...S1052MS
Mouthpiece S1052 PVC...S1052MP
Mouthpiece S1052 Rubber...S1052MR
Snorkel Valve for S1156S...S1055
Silicone Mouthpiece for 1156...S1156MS
PVC Mouthpiece for 1156...S1156MP



DBZ02-K



DBZ03-C



DBZ04-K



DBZ04-C



DBZ05-C



DBZ09-K



DBZ13



S1052MS/MP



S1052MR



S1055



S1156MS/MP

POWER INFLATOR



X21.610.000



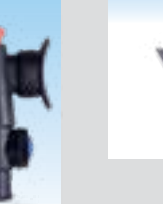
X21.600.100



B77454



B75039



UPI201



UPI208



SAK04PIN

Scubapro NEW Power Inflator w. BPI Hose...X21.610.000
Scubapro Power Inflator w. BPI Hose...X21.600.100
Seac Piston Power Inflator...B77454
Seac Power Inflator...B75039
Power Inflator...UPI201
Compact Power Inflator...UPI208
Inflator w/o Hose (fits Subgear)...SAK04PIN

LUBRICANTS



TLP25



TSA66



SAS01



TNT60



TLP27



TNT72



DBSY1

LIQUIDS & CLEANERS

Mask Cleaner 1oz...TLP75
Ear Drops...TFA20



TLP75



TFA20

DEFOG

Defog 2oz...TLP81
Silicone Spray 2oz...TLP80
Fog off...TLP85



TLP81

TLP80

TLP85

NEOPRENE GLUE



SAS12K

KEY RING STAINLESS



SAR-02

TANK KEY RING

Tank Key Ring...SAD07
Alu Tank w. Brass Pick & O-rings...SAD08



SAD07



SAD08

VELCRO BAND



TDA69

AIRWAY FOR LITTLE ANNIE

D020300

Disposable non-rebreathing airways with one-way valve should be changed after each class for maximum instructor convenience & student safety.

LITTLE ANNE

DA1016

The Little Anne manikin is a realistic, inexpensive, lightweight, adult CPR trainer that offers all the essential features. Designed with both the user & instructor in mind. Includes 2 economical, disposable airways for quick & easy cleanup & 2 removable, reusable faces.

KEY RING CPR MASK

SAR20

CPR pocket size resuscitator mask (S) with key ring

CPR RESCUE MASK

SAR10

EMERGENCY OXYGEN FIELD KIT

Includes:

- 1 x Oxygen pressure reducer with 2 x demand valve connections, 1 x adjustable 0-25L/min constant flow connection with miniature pressure gauge
- 1 x Demand valve with connection hose LP
- 1 x Adaptor Oxygen Bull nose (CGA540) to DIN (G5/8)
- 1 x Adaptor PIN Index to DIN (G5/8)
- 1 x Pocket mask for demand valve & adaptor
- 1 x Constant flow mask with reservoir, LP hose & coupling
- 1 x transport bag

MO2RegW

MO2Reg1

MO2KIT-1

Brass/Viton Washer for Oxy Reg...MO2RegW
Oxygen Regulator, Pin-index, 0-25LPM...MO2Reg1
Oxygen Field Kit...MO2KIT-1

PORTABLE OXYGEN FIRST AID KIT

Includes:

- Oxygen 2 pin index regulator
- 3 litre oxygen tank
- Non rebreather mask
- 2 pin index fill adaptor

MO2FILL

MO2KIT-2

Pin-Index - CGA 540 Adaptor...MO2FILL
Oxygen First Aid Kit...MO2KIT-2

NON REBREATHER MASK

DA1015

This disposable mask provides oxygen for breathing divers who cannot tolerate demand valve oxygen regulators or when you have 2 divers who need emergency oxygen.

MAXO2 + OXYGEN ANALYZER

- MaxO2@+A Oxygen Analyzer (incl. Sensor & OxyKnob)
- Comfortable handheld design
- Impact resistant & drip proof
- Large 3-digit LCD display
- Long battery life (approx. 5,000hrs)

MR217P52-Ext

MR217P42-Int

MaxO2@+AE Oxygen Analyzer (Ex. Sensor)...MR217P52-Ext
MaxO2@+A Oxygen Analyzer (In. Sensor)...MR217P42-Int

OXYGEN SENSOR FOR MAXO2® ANALYZER

MR125P02-Int is for MaxO2+A...MR125P02-Int
MR125P03-Ext is for MaxO2+AE...MR125P03-Ext

mactec

MR125P02-Int

MR125P03-Ext

MAX O2 ACCESSORIES

MR207P17

MR218P19

MRP11P28

OX-SNSR

Barbed Adapter w. Tubing...MR207P17
OxyKnob...MR218P19
BC Adapter Mactec...MRP11P28
OMS O2 Fuel Cell...OX-SNSR
Oxy Spy Sensor Only...XA11.452

XA11.452

RESCUE TAPE

- 1" Rescue Tape - Clear...TFA64-CL
- 1" Rescue Tape - Black...TFA64-K
- 1" Rescue Tape - Orange...TFA64-O
- 1" Rescue Tape - Red...TFA64-R

MARKER

Brite Mark Paint - Black...TPA60-K
Brite Mark Paint - Red...TPA60-R
Brite Mark Paint - White...TPA60-W
Brite Mark Paint - Yellow...TPA60-Y

K R
W Y

BRITE-MARK

WORKSHOP TOOLS



SAP-0002A



SAP-0001



XZ43.300.998



XZ43.018.000



TSA05



XZ43.300.225



XZ43.403.000
XZ43.403.001



SAA01



XZ41.496.101



XZ43.191.107



SAA06



XZ43.300.107



TS105



XZ43.300.002
XZ43.300.003



MSOCKET-6MM



M51



TSA58



DBBRT00L



XZ43.040.000



TSA99



S7402

- Adjusting Tool 2nd Stage...SAP-0002A
- Intermediate Pressure Gauge...SAP-0001
- Torque Wrench 5 - 35N... XZ43.300.998
- HP-Seat Tool MK2...XZ43.300.210
- Hose Protector Installation Tool...XZ43.018.000
- Hose Protector Installation Tool...TSA05
- Flow Vane Tool - 2nd Stages...XZ43.300.225
- Cover Tool R395 / S600 / Air2...XZ43.403.000
- Covers Tool C200, C300 Insert...XZ43.403.001
- Air Nozzle Stainless Steel...SAA01
- Plastic Syringe...XZ41.496.101
- Yoke Nut Socket...XZ43.191.107
- Air Nozzle Rubber...SAA06
- O-ring Pick Plastic / Stainless Steel...XZ43.300.107
- Nut Driver 1/4"...XZ43.300.002
- Nut Driver 5.5mm...XZ43.300.003
- 6mm Extension Drive...MSOCKET-6MM
- Divers Deluxe Tool Kit...TS105
- Scubapro Universal Tool...XZ43.040.000
- 1st Stage Holding Tool...M51
- Schrader Valve Tool...TSA58
- Stainless Multipurpose Tool...DBBRT00L
- Tank Valve Knob Removal Tool...TSA99
- O-ring Pick Brass...XZ43.300.017
- Multi Tools Stainless Steel with 12 Tools...S7402
- Multi Tools Stainless Steel with 9 Tools...S7407
- O-Ring Tool Kit + Silicone...TDA79



XZ43.300.017

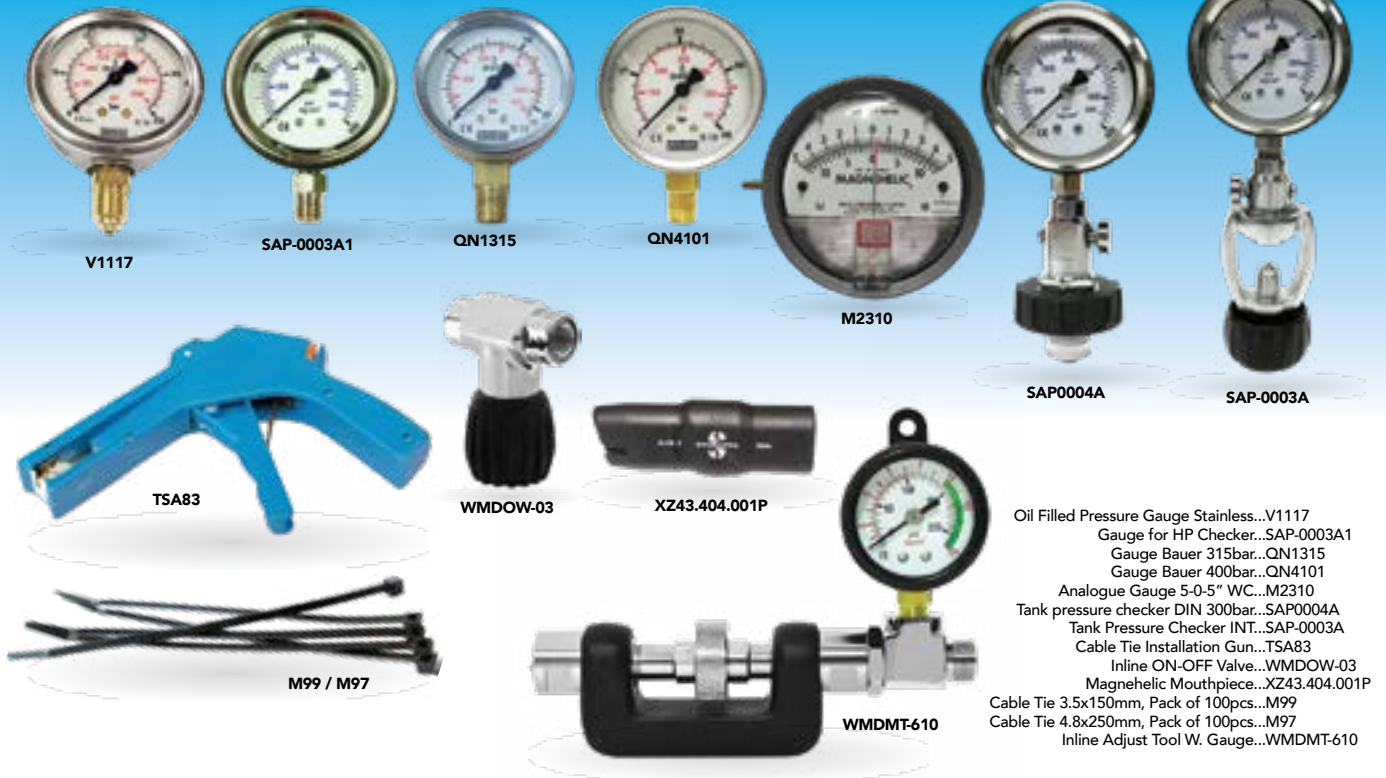


TDA79



S7407

WORKSHOP TOOLS



ULTRASONIC CLEANING DEVICE

- Ultrasonic frequency: 40,000 Hz
- Tank material: stainless steel SUS304
- Shell material: SUS304
- Tank capacity: 4.5 L
- Ultrasonic power: 180 W, 3 transducers
- Heating power: 200 W
- Tank size: 300 x 150 x 100 mm (L x W x H)



ULTRASONIC SOLUTION

- Mixing ratio 100g powder to 2L water
- Powder dissolves in water
- 500g or 1000g Container



Ultrasonic Solution (500 gram)...TSA65-500
Ultrasonic Solution (1 Kg)...TSA65-1000

DISINFECTANT SOLUTION for EQUIPMENT

- Mixing ratio 1kg powder to 20L water
- Powder dissolves in water
- 3kg or 5kg Container



Cleaning Solution (3 Kg)...DBESAFE-3
Cleaning Solution (5 Kg)...DBESAFE-5



THERMO & DEEP BLUE VALVE PARTS

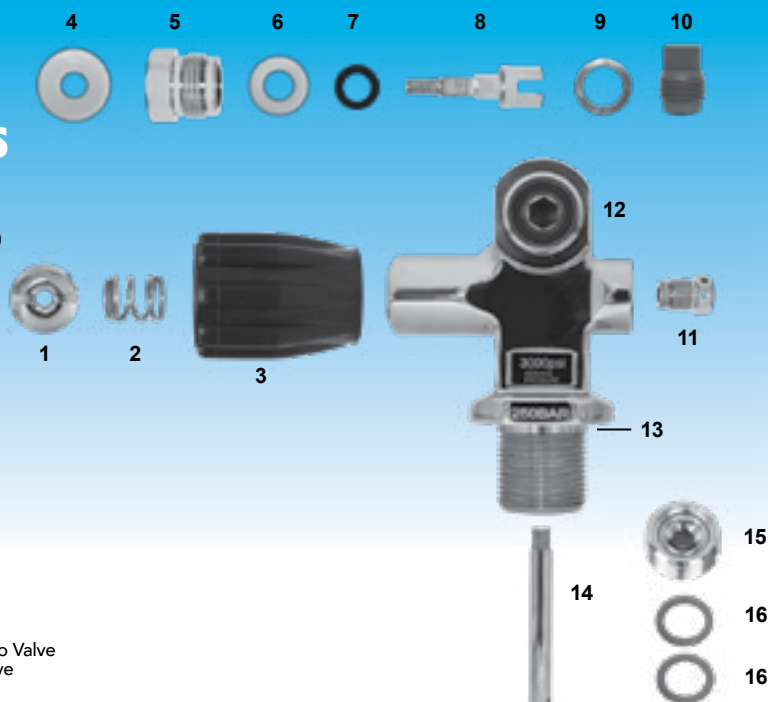
LVK01-AIR

Service Kit Thermo & Deep Blue valve
(LA015, L35069-K, L5270-16N, L3100-9, L5270-5N)
Service Kit Thermo & Deep Blue valve, DIN/INT EAN
(LA015V, L35069-K, L5270-16N, L3100-9E, L5270-5N)

LVK01-EAN

L5203-7P
L5240-9
L5240-6A
L5270-6N
L5240-10
L5270-4PN
L5270-5N
L3100-9
L3100-9E
L5270-8PN
L5270-16N
L35069-K
L3990-5000N
LA014
LA014S
LGR014P9
LA015
LA015V
L5270-15N
LVX04
L5440-23
LVP15V
LP31B

1. Handwheel Nut, EAN ready
2. Spring EAN ready
3. Handwheel - Black
3. Handwheel - Green
4. Handwheel Washer, EAN ready
5. Bonnet Nut, (same as Sherwood) EAN ready
6. Stem Packing, Ean ready
7. O-Ring for Stem, Thermo Valve, AIR
7. Viton O-Ring Stem Thermo
8. Stem EAN ready
9. Bonnet Gasket, EAN ready
10. HP-seat, O2 ready
11. Safety Assembly (3,000 psi), EAN ready
12. O-Ring Valve Outlet
12. O-Ring Valve Outlet Polyurethane
12. Viton O-Ring Valve Outlet
13. O-Ring Tank Neck
13. Viton O-Ring Tank Neck
14. Dip Tube plated (VP04 Pre 10/09), EAN ready
14. Dip Tube plated (VX04 Post 10/09), EAN ready
15. DIN / K Insert w. Viton O-rings, EAN ready
16. Viton O-Ring (Thick) Outlet DIN/INT -Thermo Pro Valve
16. O-Ring (Thick) Outlet DIN/INT - Thermo Pro Valve



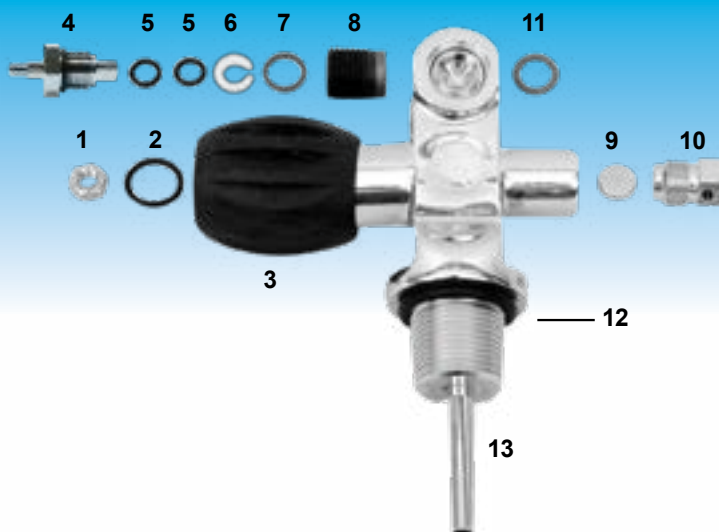
SMT VALVE PARTS

LGVP00-AIR

Service Kit SMT Valve
(LGVP07/09/45, LA015, 2 x LGR010E, LGRM075E)

LGVP22
LGRM075E-U
LGVP20
LCV04-A
LGR010E
LGVP09
LGVP07
LGVP45
LCV26-30
LA014
LA014S
LGR014P9
LA015
LA015V
LGVP28

1. Handwheel Nut
2. O-Ring Bonnet
3. Handwheel Elastomer
4. Complete Stem Assembly
5. O-Ring Stem
6. Backup Ring
7. Gasket
8. HP-Seat SMT Valve, Oxygen ready
- 9.&10. Safety Plug & Burst Disk 3,000 psi (5,000 burst)
11. O-Ring Valve Outlet
11. O-Ring Valve Outlet Polyurethane
11. Viton O-Ring Valve Outlet
12. O-Ring Tank Neck
12. Viton O-Ring Tank Neck
13. Dip Tube



Sherwood Valve

SHERWOOD VALVE PARTS

L350620-AIR

Service Kit Sherwood Valve
(LA015, L35067, L35069-K, L350610, L350618)

L5203-7P
L350611A
L60002
L1413
L5270-4PN
L350610
L35067
L350618
L9350612
L35069-K
L400012048
LA014
LA014S
LGR014P9
LA015
LA015V
L5270-15N

1. Handwheel Nut, EAN ready
2. Spring - Sherwood valve
3. Handwheel Sherwood - Black
4. Handwheel Washer, Sherwood valve
5. Bonnet Nut, EAN ready
6. Copper Gasket
7. Thick Teflon ring (new style seal)
8. Thin Teflon ring (new style seal)
9. Stem/Spindle
10. Plug Assembly HP-Seat O2 ready
11. Safety Plug Assembly 3,000 psi
12. O-Ring Valve Outlet
12. O-Ring Valve Outlet Polyurethane
12. Viton O-Ring Valve Outlet
13. O-Ring Tank Neck
13. Viton O-Ring Tank Neck
14. Dip Tube plated (VP04 Pre 10/09), EAN ready



K VALVE INT

- EAN ready
- 3,000 psi / 207 bar pressure
- Thermo compatible parts



FREE 5x O-Ring per Valve

DBMV4030

PRO VALVE INT / DIN

- EAN ready
- 3,000 psi / 207 bar pressure
- Thermo compatible parts



DBMV4035

TANK VALVE

Thermo Valve INT...LVCA4030
DIN / K Insert w. Viton O-rings, EAN ready...L5440-23
Thermo Pro Valve...LVCA4035
Thermo Pro H Adapter Left...LVH200L-N
Thermo Pro H Adapter Right...LVH200R-N

LVCA4030



L5440-23

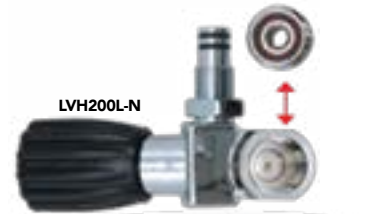
LVCA4035



DIN/INT AIR/EAN
Nitrox Ready

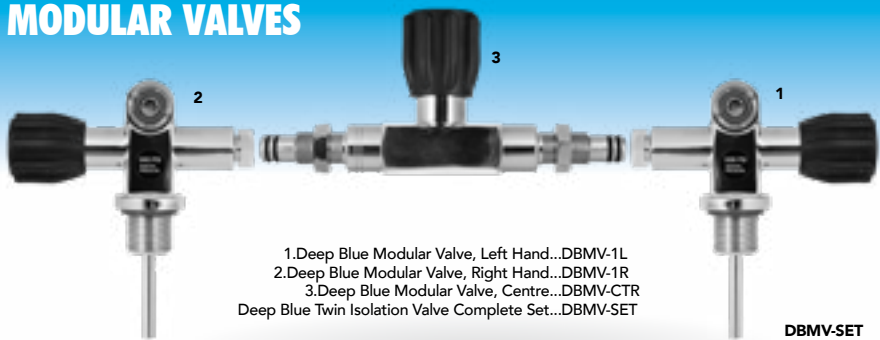


LVH200R-N



LVH200L-N

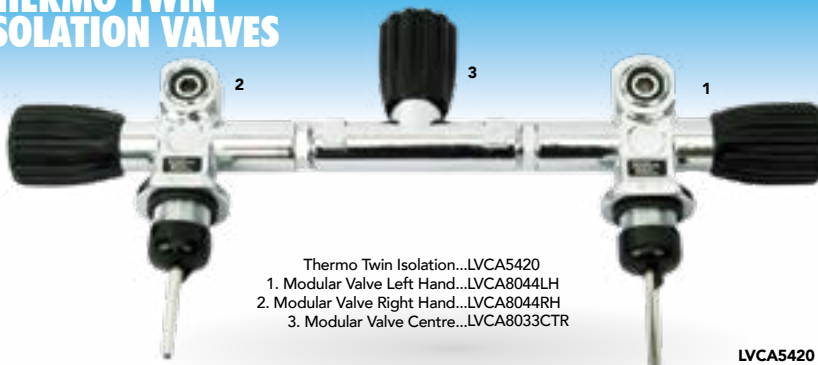
MODULAR VALVES



1.Deep Blue Modular Valve, Left Hand...DBMV-1L
2.Deep Blue Modular Valve, Right Hand...DBMV-1R
3.Deep Blue Modular Valve, Centre...DBMV-CTR
Deep Blue Twin Isolation Valve Complete Set...DBMV-SET

DBMV-SET

THERMO TWIN ISOLATION VALVES



Thermo Twin Isolation...LVCA5420
1. Modular Valve Left Hand...LVCA8044LH
2. Modular Valve Right Hand...LVCA8044RH
3. Modular Valve Centre...LVCA8033CTR

LVCA5420



ALUMINIUM TANK



Cylinder	Service Pressure		Capacity Air		Outside Diameter		Overall Length		Empty Weight		Min.Internal Volume	
Item No.	psi	bar	cu.ft.	litres	In.	mm	In.	mm	lbs	kg.	cu.in	ltrs
LL19	3000	207	19.9	563.6	4.38	111.13	18.6	471.4	8.2	3.7	175	2.9
LL40	3000	207	40.0	1132.8	5.30	133.40	24.6	628.7	15.3	6.9	350	5.7
LL50	3000	207	48.4	1370.7	6.89	175.01	19.0	482.6	21.2	9.6	424	6.9
LL63	3000	207	63.0	1784.2	7.25	184.15	21.9	555.0	26.7	12.1	552	9.0
LL80	3000	207	77.4	2192.0	7.25	184.15	26.1	661.9	31.4	14.2	678	11.1
LL100	3300	224	98.8	2798.0	8.00	203.20	26.2	665.7	41.0	18.6	804	13.2

TANK MESH

*** Tank not included

Tank Mesh - Black...TTA60-K
Tank Mesh - Yellow...TTA60-Y



TANK BAND



X20.135.005



X23.073.010



SAT-30C

Scubapro Super Cinch Band...X20.135.005
Assy Super Cinch Plastic...X23.073.010
Saekodive Tank Band...SAT-30C

TANK BOOTS



SAT01



SAT02



SAT03



TTA56

Rubber for LL63, LL80...SAT01
Rubber 18.4cm for 12L Steel Tank...SAT02
Rubber 20.3cm for 15L Steel Tank...SAT03
Plastic 17.5cm for LL50...TA56

TANK ANTI SLIP PAD



SAP0026

CAM LOCK BUCKLE

• for Tank Strap



UCL201

VALVE CAPS



SA05



TRP66



LVC-K

TA140



Rubber...SA05
Cupped - Blue...TRP66-B
Cupped - Yellow...TRP66-Y
Cupped - Green...TRP66-G
Cupped - Black...TRP66-K
Thermo Pro...LVC-K
Delrin DIN plug...TA140

VALVE DUST CAP



XZ10.101



TA143



SAD01



SAD02

Delrin DIN Cap 200 Bar...TA143
Dust Cap DIN...XZ10.101.211
Dust Cap INT...XZ10.101.212
Rubber Cap...SAD01
Plastic Cap...SAD02

TWIN TANK BANDS



NEW

WMD-801A

- 304 Stainless Steel
- Protective Rubber Insert Sleeves
- Stainless Steel Mounting Hardware
- 1.5mm Thick x 50mm High
- Suitable for 8, 10 or 12 liter Twin Tanks

MINERAL OIL

Mineral Oil - 1L...MM01
Mineral Oil - 3L...MM03
Mineral Oil - 5L...MM05



MM01



MM03



MM05

ACTIVATED CARBON

M100-C



500g carbon...M100-C
1kg Molec. Sieve & 500g Carbon...M100-Pack

SYNTHETIC OIL

QN28355-1

QN28355-5

Synthetic Oil - 1L...QN28355-1
Synthetic Oil - 3L...QN28355-3
Synthetic Oil - 5L...QN28355-5



MOLECULAR SIEVE

1000g

M100-S



FELT FOR FILTERS



M109



M111

PER SQ. METER...M105
Felt for Coltri 40mm (20pcs)...M106
BAUER P41 (5set)...M107
BAUER P31 (5set)...M108
LW 260-450 (5set)...M109
LW 160-245 (5set)...M110
BAUER P21 (5set)...M111

FILLING HOSE HP

Filling Hose HP 1m SS...M112SS
Filling Hose HP 1.5m SS...M113SS
Filling Hose HP 2m SS...M114SS
Filling Hose HP 3m SS...M115SS
Filling Hose HP 4m SS...M117SS
Filling Hose HP 5m SS...M118SS
Bauer-Filling Hose 1m...QN2817
Bauer-Filling Hose 2m...QN2818
Flexible O2 Hose R1/4" SS...MFLEX-O2-SS



FILLING VALVE

Q071744



Q071343



SDY-3

Filling Valve PN200 - No gauge...Q071744
Filling valve PN300 - No gauge...Q071743
Filling valve PN200 w gauge...Q071343
Filling valve PN300 w gauge...Q071344
Filling Valve w/o gauge...SDY-3

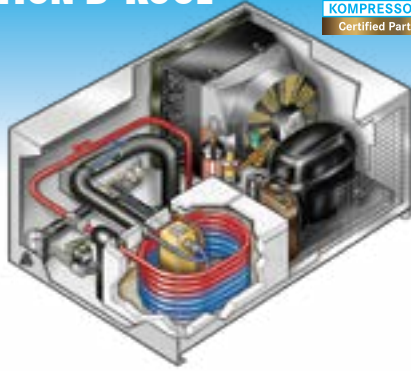


AIR STORAGE & PURIFICATION B-KOOL

The B-KOOL refrigeration dryer from BAUER considerably reduces the running costs of the compressor whilst protecting the environment at the same time.

At locations with particularly high ambient temperatures, B-KOOL assures a remarkably longer life time of the filter cartridge. You will benefit from a lower cost of purchase & storage of filter cartridges, a longer uninterrupted compressor operation & a lower consumption of filter cartridges.

- 200 - 680 l/min
- 100 - 350bar
- Up to 11 times longer life for your filter cartridges!
- Environmentally sound
- Integrated or as stand-alone version
- Easy to retrofit



BAUER
KOMPRESSOREN
Certified Partner

DIN VALVE FOR AIR BANK



Din Valve 300bar for Air Bank...MAB900

AIR STORAGE CYLINDERS



- MAB1
- Air Storage Cylinders
- 50 Liter Pressure Vessel with valve
- 300bar working pressure
- Steel cylinders with 10 year Hydro test
- Can be connected to custom specifications

BAUER PureAir Certification

"PureAir - Safe Diving": High quality breathing air is the most important element of your diving equipment. Insufficiently or even non-filtered air from the compressor may jeopardize the health & even the life of any sports diver. The **BAUER PureAir Campaign** offers any diver an easy to use guide for selecting trustworthy filling stations. By choosing to use **BAUER** state-of-the-art technology diving centers are able to meet the highest standards of Air Quality & are recognized with the award of the **BAUER Pure Air Seal**.

The exclusive **BAUER PureAir Seal** guarantees any diver that he or she really receives only the purest breathing air. Learn more at www.bauerpureair.com/diving

To find out how to get your **BAUER PureAir Certification** please contact our Sales & Service team.



JUNIOR II

The most compact & highly mobile model in our diving compressor range. Due to its toughness & reliability the JUNIOR has become a global classic. JUNIOR II offers an even more compact design & numerous improvements in details. The patented TRIPLEX filter system guarantees purest breathing air according to DIN EN 12021.

Now available with optional automatic condensate drain & final pressure switch off.



BAUER
KOMPRESSOREN
Certified Partner

MARINER 200

With 200 l/min. It is the most versatile among the new units of the PROFI-LINE II. Crash frame in series.



BAUER
KOMPRESSOREN
Certified Partner

MARINER 250

Even more performance & equipped with the TRIPLEX P31 / P41 filter in series.



BAUER
KOMPRESSOREN
Certified Partner

MARINER 320

With 320 l/min. the new Mariner 320 is the most powerful portable compressor worldwide!



BAUER
KOMPRESSOREN
Certified Partner

TECHNICAL DATA

Type max. 330bar / 5000 psig	Drive	FAD L/min*	RPM min	Drive		Filter System TRIPLEX	Dimensions (app.cm)			Weight net (app.kg)
				kW	HP		L	W	H	
JUNIOR II - B	4-stroke petrol	100	2300	4.0	5.5	P21	78	34	42	44
JUNIOR II - W	Single phase	100	2300	2.2	3.0	P21	66	39	42	46
MARINER 200 - B	4-stroke petrol	200	1300	6.1	8.0	P21	125	59	63	115
MARINER 200 - E	3-phase	200	1300	4.0	5.5	P21	125	59	63	115
MARINER 250 - B	4-stroke petrol	250	1450	6.6	9.0	P31/P41	125	59	63	120
MARINER 250 - E	3-phase	250	1450	5.5	7.5	P31/P41	125	59	63	135
MARINER 320 - B	4-stroke petrol	320	1450	9.6	13	P31/P41	130	64.5	70	138
MARINER 320 - E	3-phase	320	1450	7.5	10	P31/P41	130	64.5	70	154

MINI-VERTICUS

Now significantly quieter, thanks to the new anti-vibration frame & noise-optimised Super Silent housing;
Available with a higher charging rate of 320 l/min & with an open design as standard.
Fully automatic B-CONTROL MICRO compressor control with colour display
B-DRAIN: New automatic condensate drain is quieter & saves energy
Ergonomic design: optimum accessibility & operation
Long unit service life: use of high-quality materials that have been optimised for continuous use
Optional - Super Silent version, P61 Purification system, B-APP

- 225 & 330 Bar
- 150-320 l/min



Type Designation	Charging rate ¹		Max. operating Pressure (bar)	Speed (rpm)	Motor Output (kW)	Purification System	Weight net (kg)	Dimensions L x W x H (cm)
	l/min	m³/h						
MV 150	150	9	350	1340	4	P41	324	120x79x138
MV 200	200	12	350	1270	4	P41	324	120x79x138
MV 250	250	15	350	1470	5.5	P41	333	120x79x138
MV 320	320	19.2	350	1450	7.5	P41	350	120x79x138

Also available with switchover device 330 /225bar (5000/3300 psi)



VERTICUS

For use in professional applications: High charging rate in continuous operation
Now significantly quieter: thanks to the new anti-vibration frame & noise-optimised Super Silent housing
B-DRAIN: New automatic condensate drain is quieter & saves energy
Fully automatic compressor control: B-CONTROL MICRO with colour display
Optional oil level monitoring system: For safely switching off the compressor unit when the oil level is low.
The VERTICUS series has been developed & built specifically to meet high performance requirements in continuous operation in professional applications.

- 225 & 330 Bar
- 450 – 680 l/min



Type Designation	Charging rate ¹			No. of Compr. Stages	Speed (rpm)	Motor Output (kW)	Purification System	Weight net (kg)	Dimensions L x W x H (cm)
	l/min	m³/h	cfm						
V 450	450	25.2	15.9	4	1320	11	P61	402	120x79x153
V 540	540	32.4	19.1	4	1230	11	P61	402	120x79x153
V 680	680	40.8	24.0	4	1400	15	P61	416	120x79x153



The **POSEIDON EDITION** represents an excellent value-for-money range of compressors without compromising typical **BAUER** quality. This product range has been developed for uncomplicated operation, combining proven core components from **BAUER** with a simple but robust chassis.



- 300 - 850 l/min
- 225 / 330 / 420bar

The new generation VE range excels through its high delivery rates of up to 850 l/min. Tailored for breathing protection & scuba diving requirements, the new compressor control offers quick & easy access to all important functions.



- 250 - 300 l/min
- 225 / 330bar

The PE-MVE is BAUER's compact all-in-one solution, offering high quality at outstanding value for money. Standard with Super Silent housing, automatic condensate drain system & the user friendly BHW-CONTROL control unit.



- 200 - 300 l/min
- 225 / 330bar

The PE 200 - 300-TE models offer the optimum weight / price ratio. Owing to their compact construction, the units are easy to transport & to load onto vehicles.



- 100 l/min
- 225 / 330bar

The PE 100 is the smallest & lightest compressor unit of the PE range. With its three drive variants (petrol, three-phase & single-phase alternating current).



- 200 - 300 l/min
- 225 / 330bar

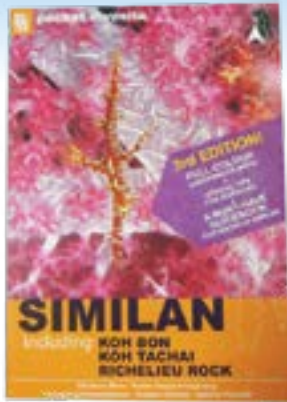
The PE 200 - 300-HE horizontal models are by far the most compact high pressure breathing air compressors in their class. The standard version comes already equipped with automatic condensate drain & easy-to-use control. Ideal for use on dive boats

SIMILAN ISLANDS

including KOH BON, KOH TACHAI, RICHELIEU ROCK (2nd Edition)

This convenient reference book is a must-have if you're planning a visit to the Similan Islands & surrounding areas. There are also lots of colourful dive site diagrams, descriptions of area dive characteristics & an abundance of practical information you'll need to know before you go.

- Information on the area, from topography to getting ready to dive there
- Detailed explanation of every dive site
- 20 full-colour illustrated underwater maps



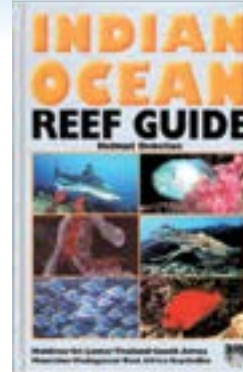
English...MPD01

INDIAN OCEAN REEF GUIDE

by Helmut Debelius

Maldives - Sri Lanka - Thailand
South Africa - Mauritius
Madagascar - East Africa - Seychelles

The author made his first dives in tropical waters around Sri Lanka 25 years ago. Since then he explored virtually the entire Indian Ocean with his camera, diving not only in the tourist centers like the Maldives or Seychelles, but also taking UW-Photos at remote islands like Cocos-Keeling in the East or Aldabra in the West. The results are shown in this book including more than 1,000 photos from the natural habitat of the marine animals. Special emphasis was given to rare species like sharks & rays.



English... K1105

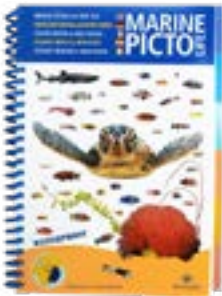
INDIAN OCEAN MARINE GUIDE

Marine Pictolife describes more than 250 marine species.

- Totally waterproof
- Multilingual (5 languages as well as in Latin)
- Almost 250 species packed into 64 pages
- Paper captions in all 5 languages
- 2 indexes including 5 phyla (mobile & stationary species)
- Format: 12.5 X 16.3 cm
- Weight: 177 g



Multi Lingual...KP107



TROPIC PACIFIC MARINE GUIDE

Marine Pictolife describes more than 250 marine species.

- Totally waterproof
- Multilingual (5 languages as well as in Latin)
- Almost 280 species packed into 64 pages
- Paper captions in all 5 languages
- 2 indexes including 5 phyla (mobile & stationary species)
- Format: 12.5 X 16.3 cm
- Weight: 177 g



Multi Lingual...KP109



ASIA PACIFIC MARINE GUIDE

Marine Pictolife describes more than 250 marine species.

- Totally waterproof
- Multilingual (5 languages as well as in Thai)
- Almost 280 species packed into 64 pages
- Paper captions in all 5 languages
- 2 indexes including 5 phyla (mobile & stationary species)
- Format: 12.5 X 16.3 cm
- Weight: 177 g



Multi Lingual...KP113



WETSUITS



DEEP BLUE
SPORTFLEX SHORTY

DEEP BLUE
SPORTFLEX PRO STEAMER

CUSTOM
PRINTING BY
DIVE SUPPLY

WE CAN PRINT:
LOGOS
NAMES
NUMBERS
SIZES
JUST ASK!

MASK STRAPS



DEEP BLUE
MASK STRAPS

DEEP BLUE
MASK STRAP COVERS

DRY BAGS



DEEP BLUE
ADVENTURE DRY BAGS

LOG BINDERS



DEEP BLUE
LOG BINDERS

POUCH



DEEP BLUE
WATERPROOF POUCH

GEAR BAG



DEEP BLUE
GEAR BAG - 65 LITERS

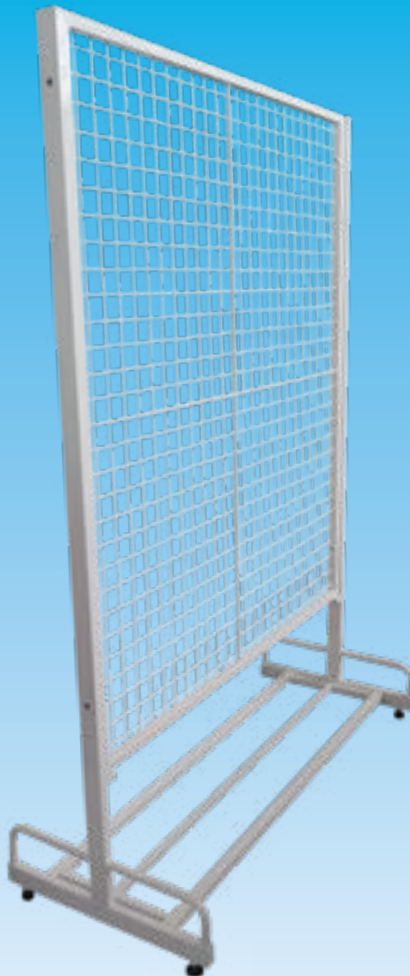


DEEP BLUE
GEAR BAG - 90 LITERS

DEEPBLUE



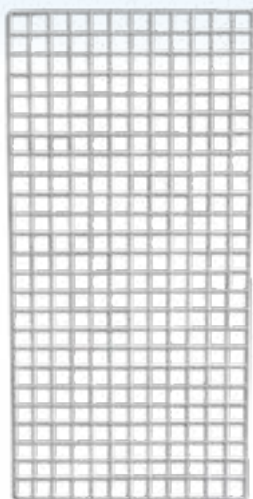
Free Standing Display (Mesh)
White 100 x 200 cm



Free Standing Display (Mesh)
White 100 x 150 cm



Free Standing Display (Mesh)
White 60 x 130 cm



Mesh Display (PVC Coated)
White 50cm x 100cm



Mesh Shelf PVC coated
White 17cm x 100cm



Display Hooks with
price tag 20cm



Display Hooks with
price tag 10cm



Acrylic A4 Flyer Display
Stand (Portrait format)



Acrylic A4 Flyer Display
Stand (Landscape format)



Mesh Joiner



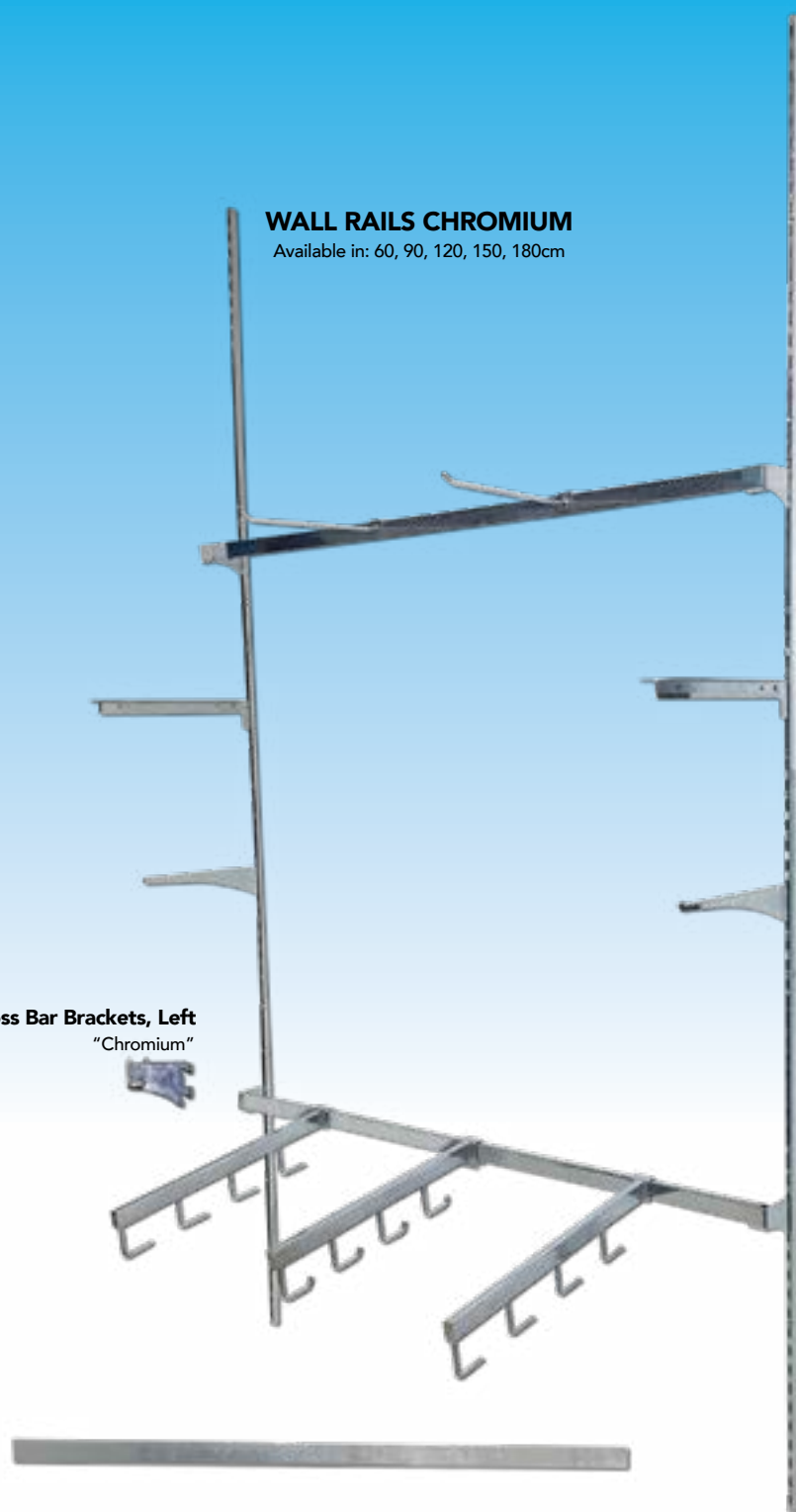
Mask Stand - Free
Standing (Clear)



Acrylic A4 Flyer Display
Stand (Portrait format)



Acrylic Hook Display Shelf
for Grid/Mesh frame
(W 19cm x D 11.5cm x H 6.5cm)
or
(W 19cm x D 7.5cm x H 8.5cm)



WALL RAILS CHROMIUM

Available in: 60, 90, 120, 150, 180cm

Accessory Hooks 25cm "Chromium"



Wood Shelf Brackets 30cm "Chromium"



Glass Shelf Brackets 25cm "Chromium"



Cross Bar Brackets, Left "Chromium"



Cross Bar Brackets, Right "Chromium"



Fin Hooks 4 hooks "Chromium"

Cross Bars 90cm "Chromium"

A New & Easier Way to Pay at **Dive Supply** Phuket

Introducing QR Payment

NO BANK FEE

*“ When you scan our QR Code
with any mobile banking app ”*

We now have 3 bank accounts for you to choose



Our existing accounts



Contact us
sales@divesupply.com
www.divesupply.com
076-383414-6

Follow us on
LINE



Follow us on
Facebook



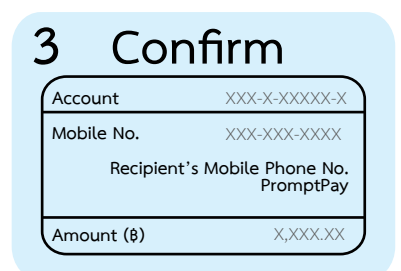
บริษัท ไดฟ์ ซัพพลาย จำกัด
DIVE SUPPLY CO.,LTD.



Select “QR code”
on the menu



Scan QR code



Check Account Name
and amount



Done!



DIVE SUPPLY HISTORY

Diving & Snorkeling Equipment Wholesale Specialist

Dive Supply is the leading distributor and wholesaler of major brand name scuba diving and water sports equipment in South East Asia and is the exclusive distributor for Scubapro, Suunto, Deep Blue Products, Seac, Pelican, Saekodive, Bauer, Luxfer, Tovatec, Olympus, Divevolk and Maxtec.

We operate from our 1,500 sqm custom built warehouse in Chalong, Phuket, where we have a fully equipped service center.

If you are looking for the leading brands in Diving and Snorkeling Equipment along with value for money and excellent customer service then Dive Supply is the place to come.

We have a product portfolio which is second to none and we are the main distributor for PADI materials throughout Thailand.



sales@divesupply.com
www.divesupply.com
facebook/DiveSupply



Dive Supply Co., Ltd.
88/5 Moo10 Patak Road,
Chalong, Phuket, Thailand



Tel : +66 (0) 76 383 414-6
Fax : +66 (0) 76 281 525





Model: Jamie Piyada
IG: jamiemisscub

Photo: Todd Thimios
IG: toddthimios

Dive Supply Main Office (Phuket)

88/5 Moo10 Patak Road, Chalong, Muang, Phuket, 83130 Thailand

Tel : +66 (0) 76 383 414-6 , **Fax :** +66 (0) 76 281 525

Email : sales@divesupply.com , **Website :** www.divesupply.com

Facebook : www.facebook.com/DiveSupply

Bangkok Dive Supply
contact@divesupplybkk.com
Tel : +66 (0) 2 354 4815
Fax : +66 (0) 2 354 4819

Dive Supply Koh Tao
kohtao@divesupply.com
Tel : +66 (0) 95 424 4273

Samui Dive Supply
info@samuidivesupply.com
Tel : +66 (0) 77 230 063
Fax : +66 (0) 77 230 186

Koh Chang Dive Supply
info@kohchangdivesupply.com
Tel : +66 (0) 39 551 518
Fax : +66 (0) 39 551 519